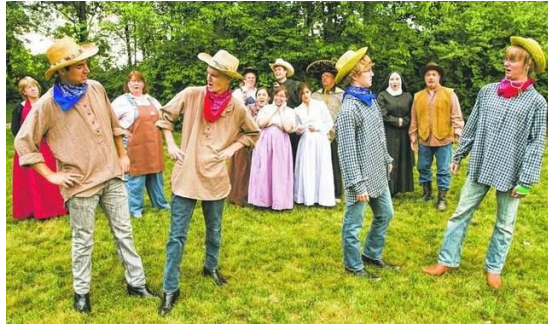


PINCKNEY-PUTNAM PARKS & RECREATION MASTER PLAN



2018-2022

ACKNOWLEDGEMENTS

Village of Pinckney Council

Linda Lavey, President
Rebecca Foster, Pro-Tem
Kayla Dombrowski, Village Trustee
Eirik Kauserud, Village Trustee
Tom Pais, Village Trustee
Shawn Tibus, Village Trustee
Robert Vedder, Village Trustee

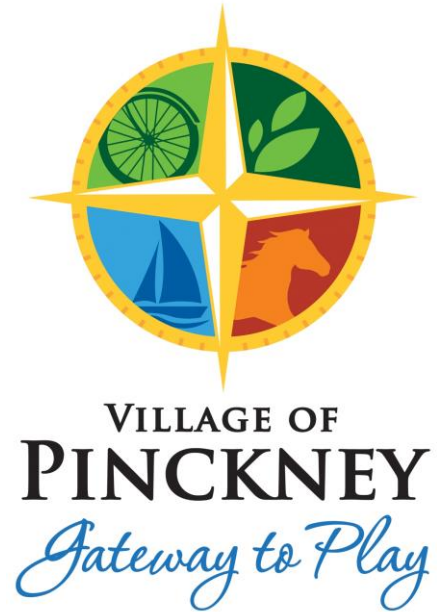
Putnam Township Board

Dennis Brennan, Supervisor
Sally Guyon, Clerk
Patrick Carney, Treasurer
Richard Bennett, Trustee
Tom Chambers, Trustee
Norman Klein, Trustee
Bob Press, Trustee

Pinckney-Putnam

Parks and Recreation Master Plan Committee

Michelle Brunner, Treasurer/Zoning Administrator, Village of Pinckney
Patrick Carney, Treasurer, Putnam Township
Rebecca Foster, Pro-Tem, Village of Pinckney
Sally Guyon, Clerk, Putnam Township
Linda Lavey, President, Village of Pinckney
Bob Press, Trustee, Putnam Township
Robert Vedder, Trustee, Village of Pinckney



Adopted by the Village of Pinckney Council on February 26, 2018
Adopted by the Putnam Township Board on February 21, 2018

Assisted by The Mannik & Smith Group, Inc.



CONTENTS

ACKNOWLEDGEMENTS	I
-------------------------------	----------

CONTENTS	III
-----------------------	------------

INTRODUCTION

DESCRIPTION OF THE PLANNING AREA.....	1
PLANNING PROCESS	2
WHAT THIS PLAN CONTAINS.....	3

COMMUNITY DESCRIPTION

POPULATION CHARACTERISTICS.....	5
HOUSING AND BUILDING TRENDS	7
LAND USE AND DEVELOPMENT PATTERNS.....	9
NATURAL FEATURES	11
PLANNING INITIATIVES	13

ADMINISTRATIVE STRUCTURE

ADMINISTRATION.....	15
FUNDING AND BUDGET	15
VOLUNTEERS & PARTNERSHIPS	16

PARK AND TRAIL INVENTORY

LOCAL PARKS	19
<i>Loy Bond Memorial Park</i>	19
<i>Putnam Township Square</i>	20
SCHOOL AND PRIVATE RECREATION FACILITIES.....	22
<i>Farley Hill Elementary School</i>	22
<i>Pinckney High and New Tech High School</i>	22
<i>Pinckney Community Public Library</i>	22
REGIONAL RECREATION FACILITIES.....	23
<i>Gregory State Game Area</i>	25
<i>Pinckney State Recreation Area</i>	25
<i>Mike Levine Lakelands Trail State Park</i>	25
<i>Trail Initiatives</i>	26
ACCESSIBILITY ASSESSMENT AND GRANT-ASSISTED PROJECTS	31

NEEDS ASSESSMENT

PARK ACREAGE COMPARISON	33
STATE AND NATIONAL RECREATION TRENDS.....	34
PUBLIC INPUT.....	35
<i>Park Visitation</i>	35
<i>New Park Facility Preference</i>	35
<i>Community Park Improvements</i>	36
<i>Support</i>	38
<i>Trail Preference</i>	39
PUBLIC REVIEW AND PUBLIC HEARING.....	40

GOALS AND OBJECTIVES

GOALS	41
OBJECTIVES.....	41
1. <i>Maintain and improve existing parks and community facilities</i>	<i>41</i>
2. <i>Continue to improve the Mike Levine Lakelands Trail and add new amenities and trail connections.....</i>	<i>41</i>
3. <i>Acquire new parkland</i>	<i>42</i>
4. <i>Establish a mechanism to promote and administer parks and recreation</i>	<i>42</i>

ACTION PROGRAM

ACTION PLAN	43
1. <i>Maintain and upgrade the existing Township Square and Loy Bond Park</i>	<i>43</i>
2. <i>Develop facilities on currently owned Township, Village, or other properties.....</i>	<i>45</i>
3. <i>Improve the Mike Levine Lakelands Trail.....</i>	<i>47</i>
4. <i>Develop a continuous community-wide walk/bike way system</i>	<i>48</i>
5. <i>Acquire and develop future parkland</i>	<i>49</i>
6. <i>Administration and funding</i>	<i>49</i>
PROJECT SCHEDULE	50
IMPLEMENTATION STRATEGIES.....	52
<i>Apply for Federal Funding</i>	<i>52</i>
<i>Apply for State Funding</i>	<i>52</i>
<i>Apply for Other Grant Funding</i>	<i>53</i>
<i>Seek Other Sources of Funding</i>	<i>53</i>

SUPPORTING DOCUMENTS

COMMUNITY SURVEY	57
PARKS AND RECREATION MASTER PLAN COMMITTEE SWOT EXERCISE.....	77
NOTICE OF DRAFT PLAN AVAILABILITY FOR PUBLIC REVIEW AND PUBLIC HEARINGS	79
PARKS AND RECREATION MASTER PLAN COMMITTEE RESOLUTION	79
MINUTES OF PUBLIC HEARING – PUTNAM TOWNSHIP	81
MINUTES OF PUBLIC HEARING – VILLAGE OF PINCKNEY.....	83
PUTNAM TOWNSHIP RESOLUTION	87
PINCKNEY VILLAGE COUNCIL RESOLUTION.....	88
LETTERS OF TRANSMITTAL TO REGIONAL AGENCIES	89



LIST OF FIGURES

Figure 1. Location Map	1
Figure 2. Planning Process	2
Figure 3. 2008 Land Use Map	10
Figure 4. Natural Features	11
Figure 5. Pinckney-Putnam High Quality Natural Areas	12
Figure 6. Livingston County Interactive Parks and Recreation Maps	13
Figure 7. Park and Recreation Facilities	21
Figure 8. Regional Recreation Facilities	23
Figure 9. Route 1 of the Great Lake-to-Lake Trails	26
Figure 10. The Iron Belle Trail	27
Figure 11. Michigan Iron Belle Trail in Washtenaw, Livingston, Ingham, and Jackson Counties.....	28
Figure 12. Hudson Mills to Mike Levine Lakelands Trail Routes.....	29
Figure 13. The Border-to-Border Loop Trail	29
Figure 14. The Huron River Water Trail	30
Figure 15. Hudson Mills to Mike Levine Lakelands Trail Options	39
Figure 16. Community-wide Priority Connections.....	39
Figure 17. Township Square Proposed Actions	43
Figure 18. Loy Bond Park Development Plan.....	44
Figure 19. Honey Creek-Mill Pond Site	45
Figure 20. Township Hall Property	46
Figure 21. Community Public Library and Former Village Education Center Sites	46
Figure 22. Mike Levine Lakelands Trail Potential Amenities	47
Figure 23. Community Walk/Bike Way System	48

LIST OF TABLES

Table 1. Population, 1990-2010.....	5
Table 2. Population Projection, 2010-2040	5
Table 3. Household Types, 2000-2010.....	6
Table 4. Age Characteristics, 2010-2040	6
Table 5. Housing Type, 2000-2010	7
Table 6. Residential Building Permits, 2000-2017	8
Table 7. 2008 Land Use Acreage.....	9
Table 8. 2010 Land Cover	9
Table 9. Putnam 2017-2018 General Fund Budget	15
Table 10. Pinckney 2017-2018 General Fund Budget.....	16
Table 11. Regional Recreation Facilities	24
Table 12. Accessibility Assessment.....	31
Table 13. Comparison to Suggested Parkland Acreage Standards	33
Table 15. Summary of Park Improvement Suggestions.....	36
Table 16. Capital Improvement Schedule.....	50

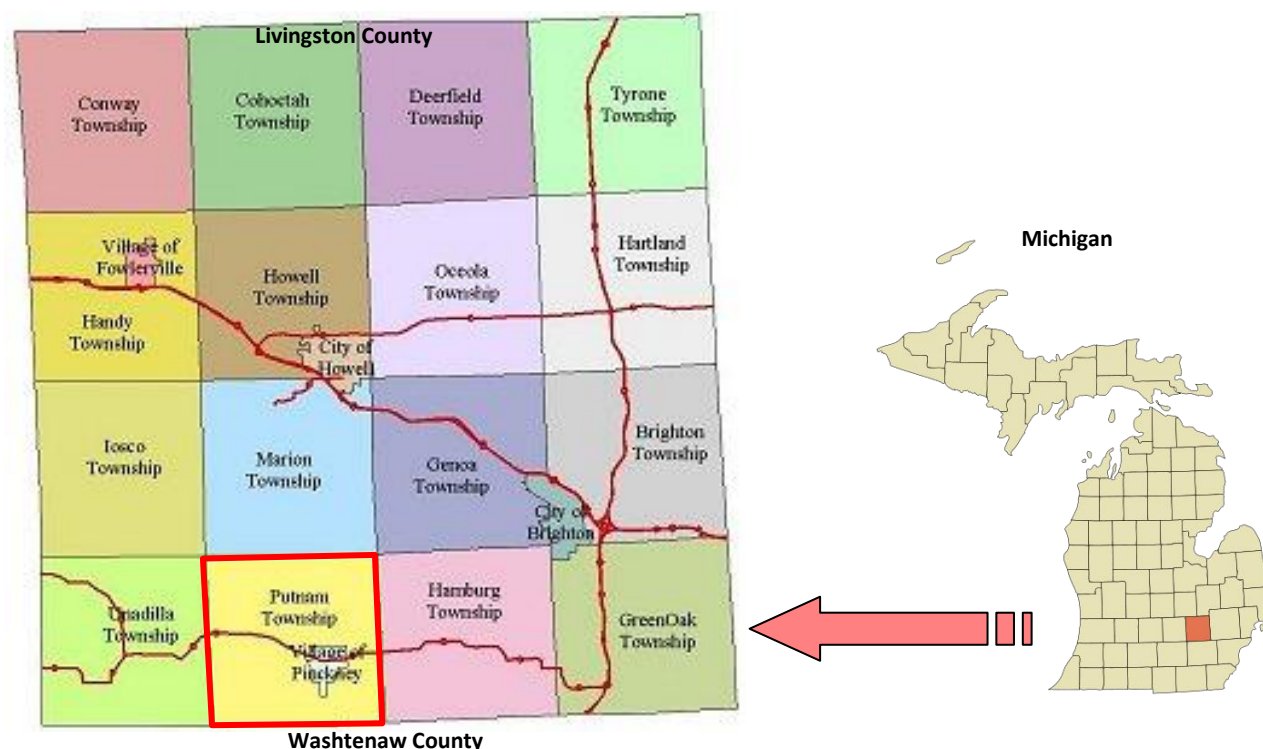
INTRODUCTION

The Pinckney-Putnam Parks and Recreation Master Plan articulates a vision for parks and recreation in Putnam Township and the Village of Pinckney. The purpose of this Plan is to guide recreation planning and development efforts of Pinckney and Putnam parks and trails over the next five-year period, through 2022. Once adopted, the Plan is the official document to be used by the communities to guide decisions regarding parks, trails, and recreation. The revised and updated Plan is intended to meet state standards for community recreation planning that are necessary to gain eligibility for grant programs.

DESCRIPTION OF THE PLANNING AREA

Putnam Township including the Village of Pinckney is the jurisdiction of this Plan. It is located in the southwest corner of Livingston County. Pinckney is approximately 1.5 square miles in size, while Putnam Township is about 34.5 square miles. Putnam Township is bordered by three Livingston County townships: Marion to the north, Hamburg to the east, and Unadilla to the west, as well as Dexter Township in Washtenaw County to the south. Three major roads bisect the two communities: Main Street or M-36, running east-west, Dexter-Pinckney Road and Pinckney Road (D-19) running north-south. Interstate 96 is approximately 12 miles north of Pinckney, while US-23 is 13 miles to the east and Interstate 94, nine miles to the south.

Figure 1. Location Map



Source: Adapted from Livingston County and Wikipedia

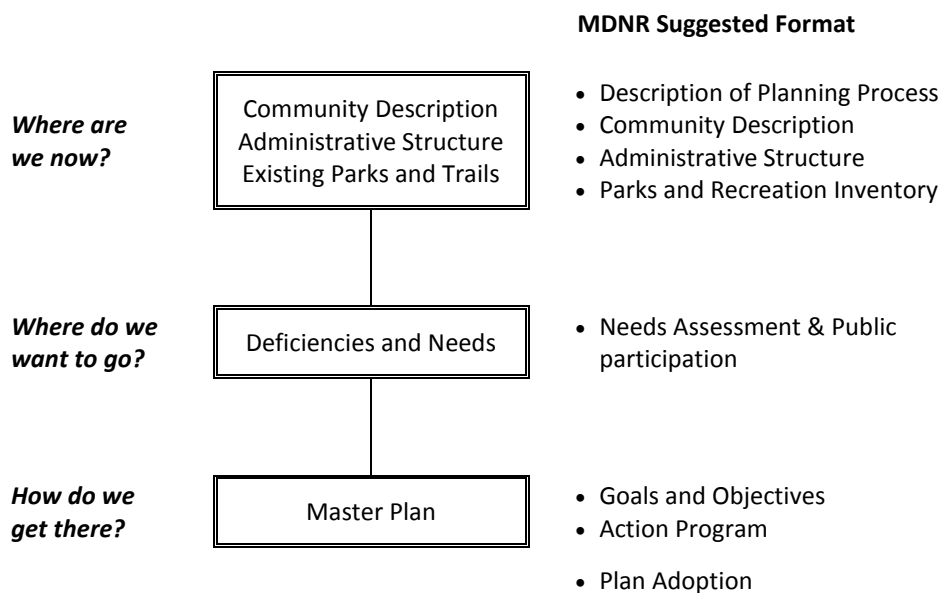
PLANNING PROCESS

The process used to generate the plan consisted of three major phases which are described below.

1. **Where are we now?** This phase involved a review of demographics and the planning context to provide a foundation for the planning process. In this phase, Township and Village parks and trails were inventoried and mapped to document existing resources and begin to assess their conditions. The information is organized into three main categories: community description, administrative structure and park inventory.
2. **Where do we want to be?** The second phase in the planning process consisted of an analysis of the communities' park and trail system to determine deficiencies and needs. A public engagement effort was initiated to solicit ideas and suggestions from the community about recreation preferences through an online questionnaire. Input was also solicited from Township and Village officials and staff at public meetings.
3. **How do we get there?** Once needs were identified, the final phase involved the development of an action plan to support the community's vision for the park and trail system and provide for park and trail planning and development projects. Recommended projects were summarized in a capital improvement plan, accompanied by strategies for implementation. This phase also included preparation of a full draft of the Plan, which was presented to the Park and Recreation Master Plan Committee as well as the public for review and comment prior to adoption.

The following diagram illustrates the planning process and how it corresponds to the MDNR suggested format described earlier.

Figure 2. Planning Process



WHAT THIS PLAN CONTAINS

The Pinckney-Putnam Parks and Recreation Master Plan follows the format suggested by the Michigan Department of Natural Resources (MDNR) in the *Guidelines for the Development of Community Park, Recreation, Open Space and Greenway Plans* (2016). The first chapter, **Community Description**, includes a summary on both the social and physical characteristics of the area as well as a discussion of current planning initiatives affecting the communities. The **Administrative Structure** chapter includes a description of how parks and recreation services are administered in the Village of Pinckney and Putnam Township including budget and funding information. The next chapter, **Park and Trail Inventory**, describes the existing Village and Township parks as well as those of the state and the region located nearby. This chapter also includes an accessibility assessment and a description of grant-assisted park projects. The **Needs Assessment** portion of the Plan presents the input received from local officials, staff, and residents, which helped in formulating the **Goals and Objectives** and **Action Program** chapters. The Action Program chapter outlines an action plan with strategies for implementation. The final chapter, **Supporting Documents**, includes some of the detailed information gathered through the planning process as well as the official resolutions and notices documenting the plan's adoption by Village Council and Township Board.



COMMUNITY DESCRIPTION

The first three chapters of the Plan provide information on the social and physical characteristics of the communities, the administration of parks and recreation services, and the existing park facilities to gain an understanding of the opportunities the communities have to offer.

POPULATION CHARACTERISTICS

According to the U.S. Census Bureau, the population of the Village of Pinckney and Putnam Township show significant growth over the past thirty years, consistent with the growth experienced by Livingston County as a whole. Projections provided by the Southeast Michigan Council of Government (SEMCOG) indicate continued increases in the future. Putnam Township will continue to experience substantial growth, while growth will occur at a slower rate for the Village.

Table 1. Population, 1990-2010

	1990	2000	2010	% Increase 1990-2010	SEMCOG July 2016 Estimate
Pinckney	1,603	2,141	2,427	51%	2,373
Putnam	4,580	5,359	5,821	27%	5,897
Total	6,183	7,500	8,248	-	8,270
Livingston County	115,645	156,951	180,957	56%	188,796

Source: U.S. Census Bureau, Census 1990, 2000, and 2010 and SEMCOG Forecast

Table 2. Population Projection, 2010-2040

	2010	SEMCOG 2040 Forecast	% Increase 2010-2040
Pinckney	2,427	2,768	14%
Putnam	5,821	7,516	29%
Total	8,248	10,284	-
Livingston County	180,957	214,313	18%

Source: U.S. Census Bureau, Census 2010 and SEMCOG Forecast

In addition to examining the number of people in Putnam and Pinckney, it is important to understand the characteristics of the population. These qualities can suggest a need for certain types of recreational facilities or programs. The following presents basic information about Township and Village residents.

The proportion of households with children have decreased from 2000 to 2010 from 51 to 46 percent in the Village and from 38 to 32 percent in the Township, while households with seniors have increased from 13 to 16 percent for the Village and from 15 to 23 percent for the Township.

Table 3. Household Types, 2000-2010

	Pinckney				Putnam			
	2000		2010		2000		2010	
Total Households	731		869		1,895		2,166	
Households with children	370	50.6%	395	45.5%	726	38.3%	700	32.3%
Households with seniors 65 +	97	13.3%	136	15.7%	280	14.8%	504	23.3%

Source: U.S. Census Bureau, Census 2010 and SEMCOG Forecast

In 2010, children below the age of 18 made up about 31 percent of the total population in Pinckney and 23 percent in Putnam. The number of children in the Village is projected to decrease by 60 to represent a decrease from 31.2 to 25.2 percent in the proportion of children in Pinckney in 2040, while children in the Township are projected to increase by 425 to represent an increase from 22.6 to 23.2 percent in the proportion of children in Putnam in 2040. The fastest segment of the population will be seniors. Indeed, the number of people over 65 years of age is projected to increase by 358 to represent an increase in the proportion of seniors from 7.4 to 19.4 percent in the Village while the Township will see an increase of 1,047 to represent an increase from 12.4 to 23.5 percent.

Table 4. Age Characteristics, 2010-2040

	Pinckney				Putnam			
	2010		2040		2010		2040	
Preschoolers, up to 5 years	178	7.3%	215	7.8%	233	4.0%	383	5.1%
School aged, 5 – 17 years	580	23.9%	483	17.4%	1,083	18.6%	1,358	18.1%
Young adults & families, 18 – 34 years	483	19.9%	625	22.6%	883	15.2%	1,198	15.9%
Families, 35 – 64 years	1,007	41.5%	908	32.8%	2,902	49.9%	2,810	37.4%
Seniors, 65 years and over	179	7.4%	537	19.4%	720	12.4%	1,767	23.5%
Total	2,427	100%	2,521	100%	5,821	100%	8,596	100%

Source: U.S. Census Bureau, Census 2010 and SEMCOG Forecast

Residents of both Putnam Township and the Village of Pinckney are predominantly white. Other races make up less than three percent of the population. The minority groups include African Americans, people of Asian descent, and people of other or mixed race origins.

HOUSING AND BUILDING TRENDS

Between 2000 and 2010, the Pinckney-Putnam area experienced steady housing growth. The number of housing units increased by 140 in Pinckney, while Putnam Township saw 378 new units during the same time period. Single-family homes are predominant accounting for 94 percent of the housing stock in Putnam Township and 91 percent in Pinckney. The other units in Putnam Township include 4 percent duplexes or townhouse/condos, 1 percent apartments, and 1 percent manufactured housing units. The Village includes 4 percent duplexes or townhouses/condominiums, and 5 percent apartments. The median house value for the Village in 2010 was \$174,400, down from \$197,784 in 2000. Putnam Township's median house value decreased slightly from \$249,506 in 2000 to \$240,900 in 2010.

Table 5. Housing Type, 2000-2010

	Putnam			Pinckney		
	2000	2010	Change 2000-2010	2000	2010	Change 2000-2010
Single-Family Detached	1,970	2,370	400	654	822	168
Duplex	38	48	10	32	7	-25
Townhouse/Attached Condo	42	39	-3	9	34	25
Multi-Unit Apartment	2	37	35	69	41	-28
Mobile Home/Manufactured Housing	78	14	-64	0	0	0
Total	2,130	2,508	378	764	904	140

Source: U.S. Census Bureau, Census 2000, and 2010 American Community Survey 5-Year Estimates



The growth in population, households, and housing units from 2000 and 2010 for the Pinckney-Putnam area is consistent with the trend in the economy experienced in Livingston County and southeast Michigan. As Table 6 shows, there was a clear drop in the total of residential building permits in the mid 2000's with significantly fewer permits issued since 2005. These numbers represent the net total residential building permits considering both constructions and demolitions. This trend has changed slightly since 2012 for the Township.

Table 6. Residential Building Permits, 2000-2017

	Pinckney	Putnam	Livingston County	Southeast Michigan
2000	43	76	2,007	16,138
2001	41	55	1,911	14,141
2002	19	59	2,003	17,645
2003	11	59	1,888	19,631
2004	7	41	2,005	21,093
2005	1	19	1,447	14,850
2006	12	9	576	7,373
2007	-1	6	315	2,786
2008	1	1	156	-1,035
2009	0	-1	49	-477
2010	0	2	137	365
2011	0	5	161	1,166
2012	0	19	360	2,256
2013	0	11	669	5,069
2014	0	20	736	1,481
2015	0	12	618	3,154
2016	0	9	587	4,705
2017	0	8	474	4,973
Total	134	410	16,099	111,988

Source: SEMCOG Data

LAND USE AND DEVELOPMENT PATTERNS

Since the Village was platted in 1837 around a central town square north of a mill and on a main trail, the Pinckney-Putnam area has largely remained a rural community including low density residential development in the Township and higher density residential development with commercial establishments in the Village along Main Street. This development pattern is principally due to a limited road network combined with numerous lakes, wetlands, and natural features. The predominant land use in Putnam and Pinckney is residential with single-family residential land uses encompassing about half of the Township's land area at over 50 percent and 46 percent of the Village land area. Parks, trails, and open spaces amount to 7 percent of the Village and 27 percent of the Township.

Table 7. 2008 Land Use Acreage

	Putnam		Pinckney	
	Acres	Percent	Acres	Percent
Agricultural	3,147	14.5%	1	0.1%
Single-Family Residential	10,913	50.3%	495	46.0%
Multi-Family Residential	1	0.0%	5	0.5%
Commercial	53	0.2%	72	6.7%
Industrial	303	1.4%	146	13.6%
Government/Institutional	308	1.4%	116	10.7%
Park, Recreation & Open Space	5,810	26.8%	71	6.6%
Transportation, Communication & Utility	362	1.7%	127	11.8%
Water	779	3.6%	43	4.0%
Total	21,676	100.0%	1,076	100.0%

Source: SEMCOG Data

Table 8. 2010 Land Cover

	Putnam		Pinckney	
	Acres	Percent	Acres	Percent
Impervious (buildings, roads, driveways, parking lots)	870	4.0%	204	18.9%
Trees (woody vegetation, trees)	11,507	53.0%	345	32.1%
Open Space (agricultural fields, grasslands, turf grass)	8,047	37.1%	447	41.6%
Bare (soil, aggregate piles, unplanted fields)	190	0.9%	8	0.7%
Water (Rivers, lakes, drains, ponds)	1,085	5.0%	72	6.7%
Total	21,699	100.0%	1,075	100.0%

Source: SEMCOG Land Cover data was derived from SEMCOG's 2010 imagery. Acreages are approximate and have been rounded to the nearest whole number.

Figure 3. 2008 Land Use Map

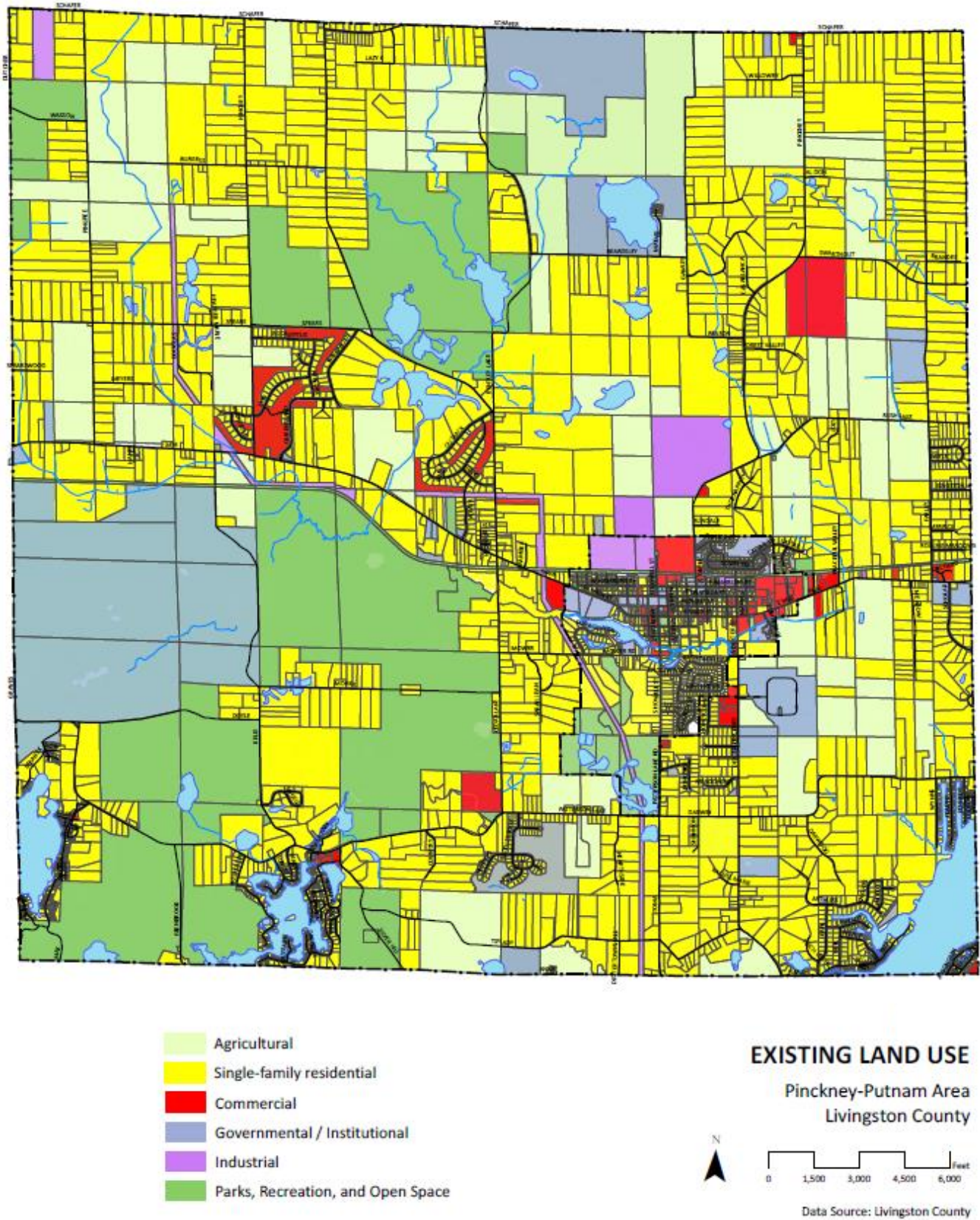
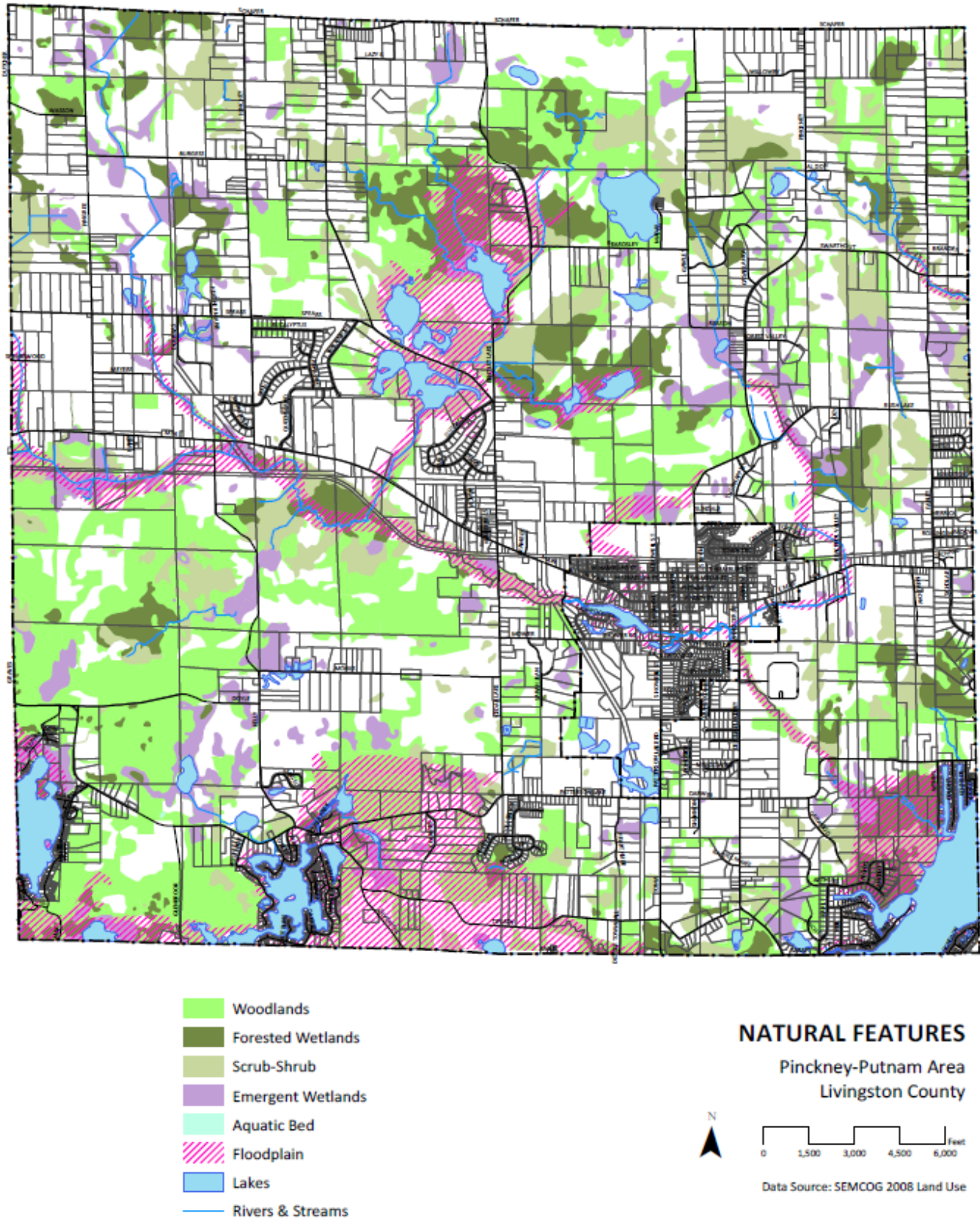


Figure 4. Natural Features



NATURAL FEATURES

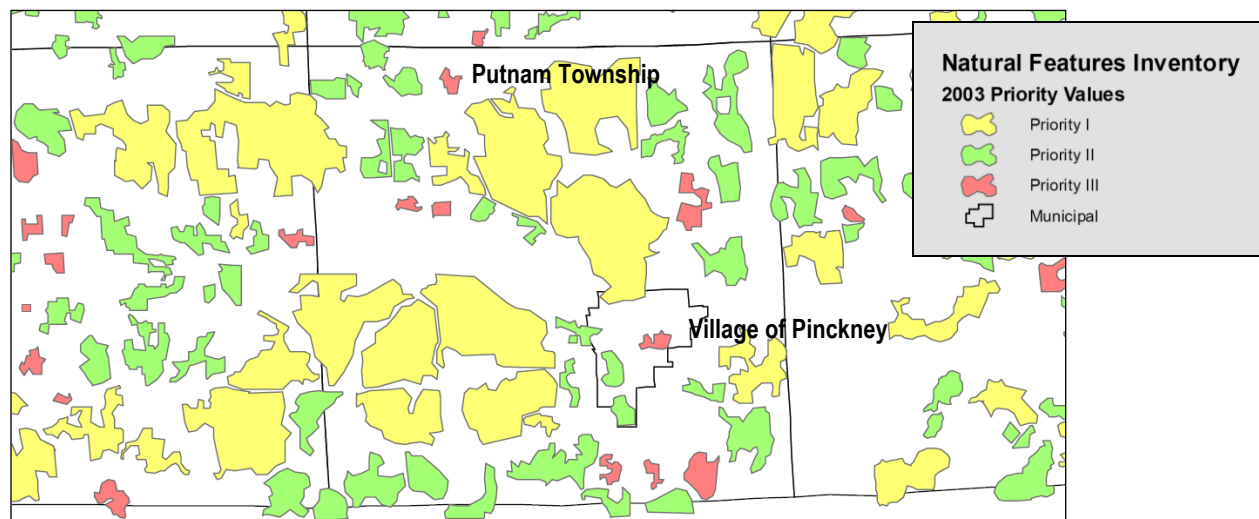
The natural features of Pinckney and Putnam have played a major role in influencing and attracting growth and development to the area. Like much of Michigan's southern lower peninsula, the area's landscape is characterized by gently rolling topography formed through glacial action. As the glaciers retreated, the outwash of sand, soil, and debris created an irregular pattern of hills and depressions that collected water, creating the region's many lakes and wetlands.

The Huron River and its associated chain of lakes and wetlands to the east of the Village have made the Pinckney-Putnam area a very desirable location to live and recreate. Honey Creek, a tributary of the Huron River, is an important waterway flowing from west to east through the center of the Village and Township. Approximately 4 percent of the area covered by the Village or Township consists of waterways and lakes. The major lakes include Portage, Hi-Land, and Patterson lakes. Mill Pond, the largest water body in the Village of Pinckney, is surrounded by low-density residential development.

Existing woodlands are located primarily within the state land and along the waterways and wetlands. Moderately to well-drained wooded areas in the Township consist mostly of a mixture of hardwoods including oak, hickory, sugar maple, ash, cherry, beech, basswood, and elm. Vegetation on poorly-drained soils consists mainly of elm, red maple, aspen, white cedar, and tamarack. Approximately 20 percent of the Township is covered by woodlands.

Livingston County identified and evaluated the county's high-quality natural areas. Criteria included size, presence of riparian lands, wetlands, and connectivity to assess each natural area's ecological value. The study revealed a large number of sizeable, high-quality natural areas in the County. Putnam and Pinckney exhibit a number of high quality natural areas as illustrated in Figure 5. These natural areas include the existing state land holdings of the Pinckney State Recreation Area and Gregory State Game Area as well as land owned by the University of Michigan and private camps. Other areas such as the area located immediately north of the Village include open space and farmland.

Figure 5. Pinckney-Putnam High Quality Natural Areas



Source: Livingston County Planning Department

PLANNING INITIATIVES

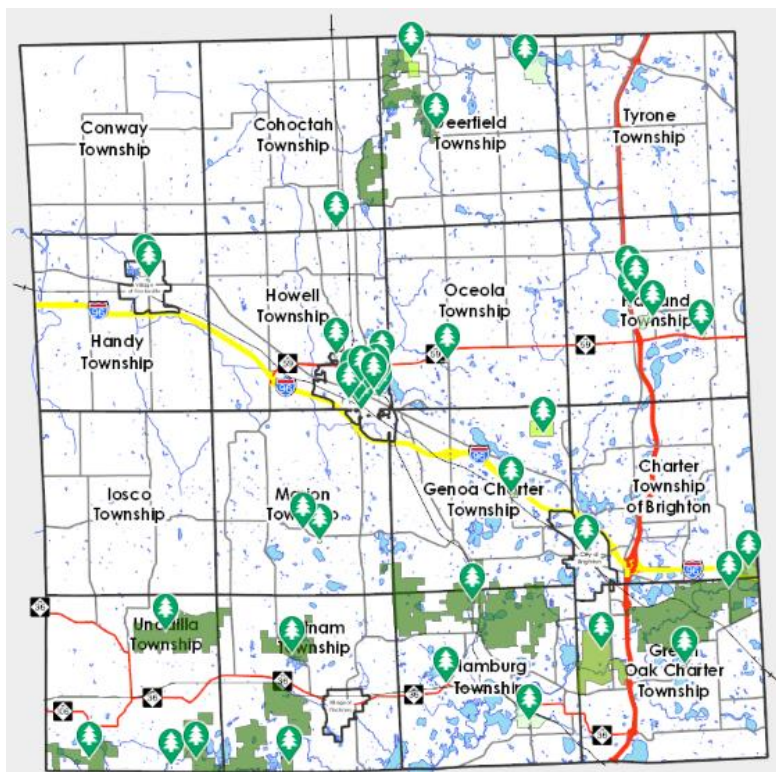
While change is inevitable and growth in both population and housing will occur, Livingston County is committed to managing that growth to enhance economic benefit, recreational activities, and overall quality of life for all its residents. Livingston County is in the process of updating its County Master Plan which considers parks and recreation. The master plan has identified a number of needs which include:

- Additional parks and recreation resources on the west side of the County;
- More walking/biking/hiking trails;
- Additional and improved connections to parks and amenities;
- A County regional trail plan; and
- Expansion and improvement of parks and recreation opportunities, particularly non-motorized pathways.

This information served to formulate a set of preliminary goals and objectives. While the plan has not been adopted yet, goals considered include:

- Map and promote Livingston County Parks and Recreation assets;
- Map planned and proposed linkages between public and private Livingston County parks and recreation resources;
- Facilitate coordination between area non-profit nature conservancies, camp organizations, and public park providers; and
- Encourage local communities to include Complete Streets language in their master plans and recreation plans.

Figure 6. Livingston County Interactive Parks and Recreation Maps



Locally, the 2015 Village of Pinckney Master Plan outlined several objectives to provide high quality parks, open spaces, and recreation opportunities for the community and to preserve and enhance its natural resources. They include:

- Market the Village as a regional recreation hub, or Trail Town, that provides convenient access to thousands of acres of state parks and recreational areas with active and passive recreational opportunities;
- Continue to collaborate with interest groups to renovate the historic Pinckney Depot at the intersection of D-19 and the Mike Levine Lakelands Trail;
- Enhance access and connections to the Mike Levine Lakelands Trail from residential areas, Pinckney High School, and the downtown;
- Coordinate recreation planning with Livingston County, Pinckney Schools, MDNR, surrounding communities, and other entities;
- Preserve an interconnected system of open spaces, or a green infrastructure, that contains high quality natural and environmentally sensitive areas; and
- Protect the water quality of the Village lakes, streams, and creeks particularly Mill Pond and Honey Creek.

With vast amount of natural areas owned by the State, the University of Michigan, and others, Putnam Township also formulated a goal in its last Master Plan to preserve high quality natural areas, recreational opportunities and trails, waterways, wetlands, and woodlands.

ADMINISTRATIVE STRUCTURE

The administration of parks and recreation services in the Village of Pinckney and Putnam Township is the responsibility of the Village Council and the Township Board.

ADMINISTRATION

A joint Parks and Recreation Master Plan Committee has been established to guide the efforts for preparing the Community Parks and Recreation Master Plans in 2000, 2007, 2013, and again for the current plan. It includes members of the Village Council, Township Board, and Planning Commissions from both communities.

FUNDING AND BUDGET

The Township general fund budget for 2017-2018 contains funding for recreation, and the maintenance and improvement of the Township Square and the Township Hall property.

The recreation fund expenditures include primarily budget amounts for maintaining the Mike Levine Lakelands Trail (\$10,000), the Depot (\$1,000), and other properties (\$1,500).

Table 9. Putnam 2017-2018 General Fund Budget

Revenues	
Taxes	\$286,698
Licenses and Permits	\$4,100
State Shared Revenue	\$445,000
Metro Act	\$9,000
Gravel Pit	\$11,000
Charges for Services	\$98,500
Charter Cable	\$72,000
Miscellaneous	\$800
Reimbursements	\$2,400
Transfer in	\$472,700
Total Revenue	\$1,402,198
Expenditures	
Administration	\$355,200
Cemetery	\$10,100
Township Hall	\$114,300
Senior Center	\$55,800
131 S Howell	\$3,100
Township Square	\$19,900
Unallocated	\$21,500
Highways and streets	\$115,500
Recreation	\$12,500
Fire/Public Safety	\$472,700
Board of Review	\$2,000
Police Public Safety	\$102,000
Zoning	\$32,400
Planning Commission	\$24,900
Election	\$15,000
Total Expenditures	\$1,356,900

The Village budget for Parks and Recreation includes money allocated for the maintenance of Loy Bond Park and for the update of the Parks and Recreation Master Plan. The Village general fund budget is presented in Table 10.

Table 10. Pinckney 2017-2018 General Fund Budget

Revenues	
Property Tax	\$641,000
State Revenue Share	\$190,000
Refuse, Leaf & Brush	\$166,000
Cell Tower Revenue	\$62,000
Other Revenue	\$38,200
Rental Income	\$25,500
Reimbursements & Transfers	\$151,500
Total Revenues	\$1,274,200
Expenditures	
Village Council	\$18,030
Village Administration	\$142,065
Auditors	\$4,000
Legal Fees	\$10,000
Office Overhead	\$46,260
Buildings and Grounds	\$31,360
Parks and Recreation	\$4,005
Police	\$480,740
Department of Public Works	\$296,730
Refuse	\$159,295
Planning Commission	\$11,705
Economic Development	\$3,350
Street Lights	\$35,000
Transfer	\$73,200
Total Expenditures	\$1,315,740



VOLUNTEERS & PARTNERSHIPS

Both Putnam and Pinckney maintain a relationship with Pinckney Community Schools, which own and maintain various recreational facilities and sports fields in the community. In addition, Pinckney Community Education, which is run by the Pinckney Community Schools, offers a variety of recreation programs.

Other organizations run various athletic recreation programs independently from the Township or Village. They are non-profit organizations, run by a membership elected Board of Directors and include:

- The Pinckney-Hamburg Baseball and Softball Association;
- The Hamburg Community Soccer Club;
- The Pinckney Blues Soccer Club; and
- The Hamburg Pirate Youth Football Association.

Service clubs and community groups have also played a significant role in providing additional volunteer labor and financial support for park facilities and programs. These clubs and groups include:

Service clubs:

- Boy Scouts of America;
- Girl Scouts;
- Kiwanis Club of Hamburg;
- Livingston County 4-H;
- Lions Club; and
- The American Legion Pinckney Memorial Post 419.

Recreation Use Groups:

- Michigan Mountain Biking Association;
- Pinckney Aquatic Club;
- Pinckney Pedalers;
- Pinckney Trail Riders Association;
- Pinckney Youth Wrestling;
- Jackalope Running Club; and
- Waterloo Horsemen's Association.

Other Organizations:

- Friends of the Mike Levine Lakelands Trail;
- Livingston Land Conservancy;
- Pinckney Garden Club; and
- The Pinckney, Putnam, Hamburg, Hell Chamber of Commerce (PPHH).



PARK AND TRAIL INVENTORY

The residents of Pinckney and Putnam have a variety of available regional recreational resources. In addition, the area includes two local park facilities: the Town Square and Loy Bond Memorial Park. There are also public and private schools, and privately-owned recreational facilities in the area. This section describes these recreational resources.

LOCAL PARKS

Loy Bond Memorial Park

The Village of Pinckney owns and maintains a community park within the Portage Dells Subdivision in the southeast portion of the Village. The 3.5-acre park includes:

- Playground equipment;
- A sand volleyball court;
- A park sign and parking area; and
- Open space with mature trees and an open grass area.



Putnam Township Square

Located at the center of the Village, the Town Square is a 1.6-acre historic community park owned and maintained by Putnam Township. It includes:

- A pavilion/band shell;
- A playground;
- An ice skating rink in the winter months;
- Mature trees and grass open areas; and
- The Historic Town Hall currently serving as a small community center.

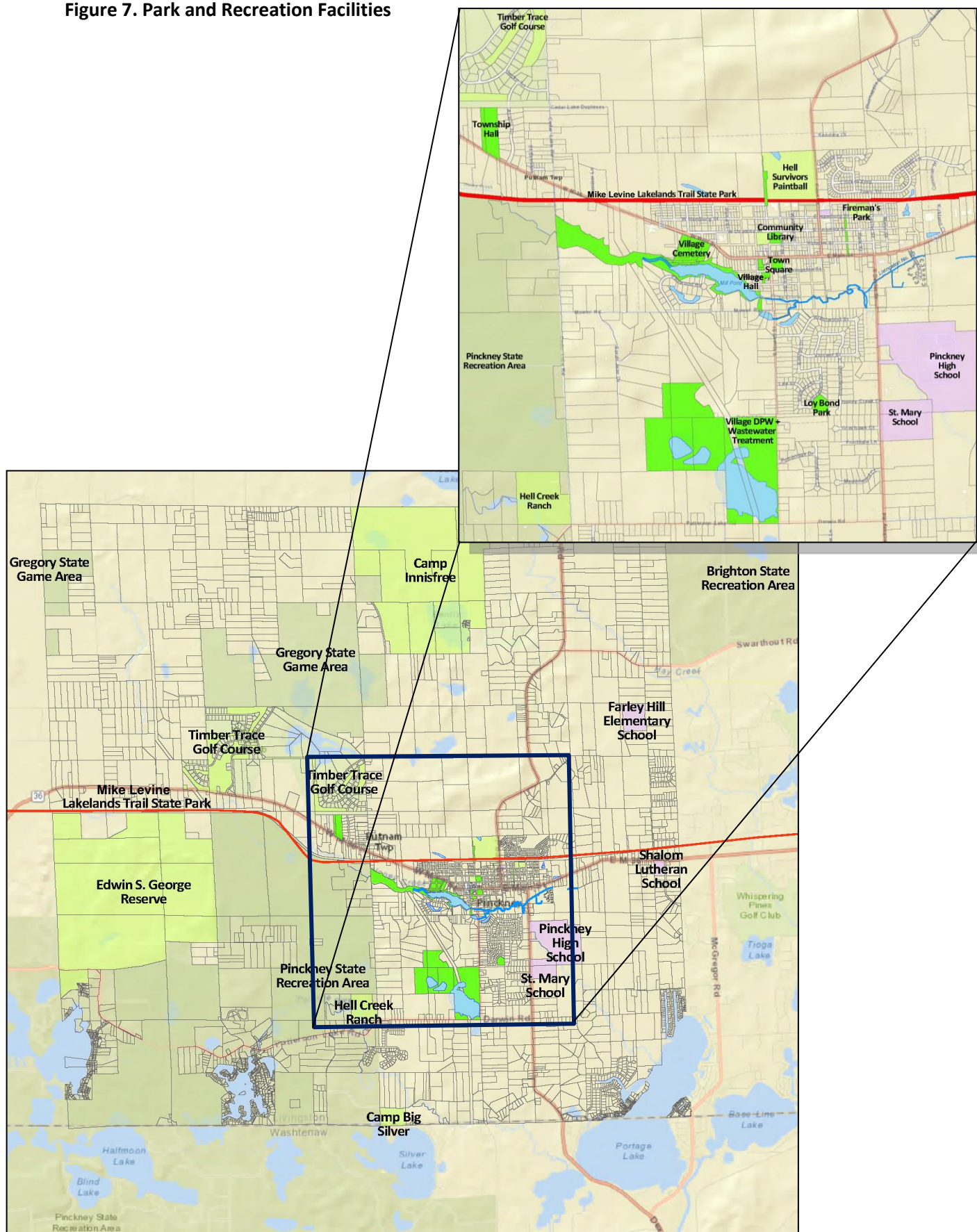


The Square is the site for special events sponsored by the Village of Pinckney Downtown Development Authority such as Spooktacular, Light Up the Park, Memorial Day Parade, and St. Patrick's Day Parade. The Pinckney, Putnam, Hamburg, Hell Chamber of Commerce also sponsors the Art in the Park while the Pinckney Lions Club supports Hootin' in the Park. The square is used for weddings, reunions, birthdays, parades, and other events.

The senior Center located on Mower provides a variety of activities and special services including transportation to area seniors. Putnam and Pinckney own and maintain other properties such as the Putnam Township and Village Halls. These properties are shown on Figure 7.



Figure 7. Park and Recreation Facilities



SCHOOL AND PRIVATE RECREATION FACILITIES

Farley Hill Elementary School

Located in the northeast portion of the Township, it includes about 20 acres of land with open space, playground equipment, wetland boardwalk, observation deck, and nature trail.

Pinckney High and New Tech High School

The high school is located in the south part of the Village on 103 acres of land and includes 10 tennis courts, two soccer fields, two baseball fields, a football field, a practice field, a running track, an off-road running trail, and an indoor pool and gymnasium.

Pinckney Community Public Library

A portion of the former Village Education Center property was redeveloped for the new Community Public Library. The west half of the property is now owned by People's Church and includes about two acres of land with a ballfield, walkways, and playground equipment.

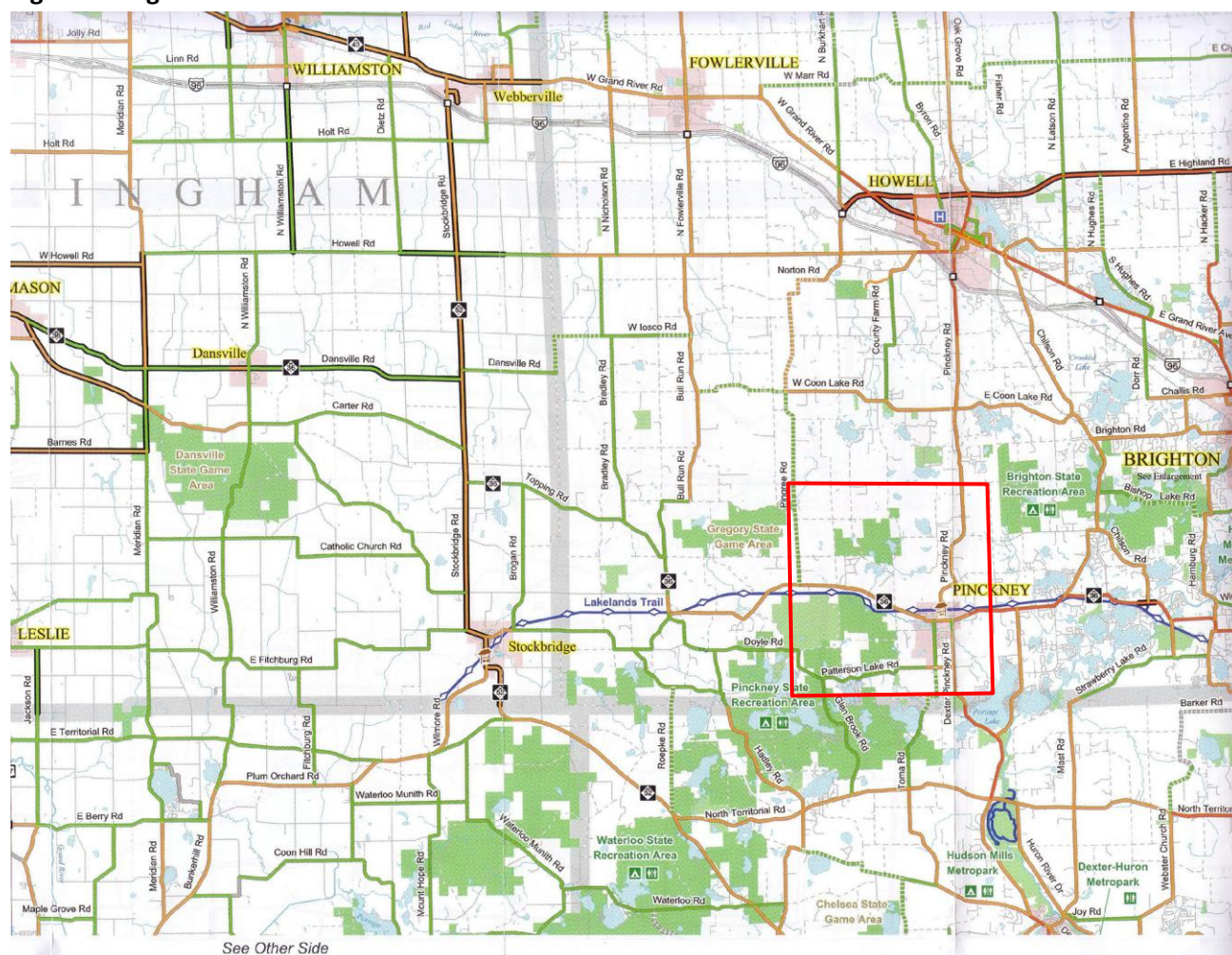
A number of private recreation facilities can also be found in the community. They include:

- Light of the World Montessori School, a private Christian Montessori School located on the Shalom Lutheran Church property on M-36 in the eastern border of Putnam Township including playground equipment and nature trails;
- Light of the World Academy, a charter school Kindergarten through Eighth grade, located on Pearl Street on about 2 acres of land including a small playground and indoor gymnasium;
- St. Mary School, a private school, Kindergarten through Eighth grade, located south of Pinckney High School on 30 acres of land including playground equipment;
- Arise Church Community Dog Park, a 2-acre fenced-in area for off-leash dog exercise and play located on Dexter-Pinckney Road, south of Pinckney High School;
- Camp Big Silver, a co-ed residential camp containing about 27 acres of land in southern Putnam Township owned and operated by the Boys/Girls Clubs of Toledo;
- Camp Innisfree, a former Girl Scout camp on 992 acres of land located on Schafer Road northwest and adjacent to the Gregory State Game Area in the Township, including two lakes, an equestrian center, a ropes course, and a zip line;
- Edwin S. George Reserve, a University of Michigan wildlife sanctuary and research area including 1,300 acres of land in Putnam Township;
- Fireman's Park, a 0.8-acre open space owned by ACO Industries and located in the Village which includes some playground equipment and a grass area;
- Hell Creek Ranch, a 37-acre campground including Heavenly Horse Stables, primitive camping and water/electric hook-ups, and a swimming pool abutting the Pinckney Recreation Area;
- Hell Survivors Paintball Playfield, a 40-acre site including camp sites located north of the Village;
- North Star Reach Camp, a summer camp serving children with health challenges on 105 acres located just outside Putnam Township and including a health center, dining hall, cabins, arts and crafts center, athletic courts, sports fields, tree house with zip line, amphitheatre, and dock;
- Timber Run Equestrians, a 20-acre property located on M-36 with access to miles of trails including Timber Trace Golf Course and the Mike Levine Lakelands Trail; and
- Timber Trace Golf Club, an 18-hole golf course on 460 acres of land including a driving range and club house.

REGIONAL RECREATION FACILITIES

In addition to the previously described recreational facilities, there are over 43,500 acres of parkland owned by the state and the Huron-Clinton Metropolitan Authority (HCMA) in adjoining townships. These facilities are considered regional recreational facilities. They are large facilities that provide opportunities such as camping, swimming, boating, hiking, and golfing which are typically beyond the ability of a local municipality to provide. Figure 8 depicts the location of the regional parks and Table 11 lists the recreational activities they offer. A detailed description of the regional facilities located within to Pinckney and Putnam follows.

Figure 8. Regional Recreation Facilities



Source: MDOT University Region Road and Trail Bicycling Guide, 2008.

Table 11. Regional Recreation Facilities

		State & Recreation Areas					HCMA Metroparks		
		Brighton State Recreation Area 4,947 Ac.	Gregory State Game Area 2,223 Ac.	Mike Levine Lakelands Trail State Park 23 Miles	Pinckney State Recreation Area 11,000 Ac.	Waterloo State Recreation Area 20,500 Ac.	Dexter Huron Metropark 122 Ac.	Hudson Mills Metropark 1,508 Ac.	Huron Meadows Metropark 1,540 Ac.
Passive Activities	Picnicking	●			●	●	●	●	●
	Playground	●			●	●	●	●	●
Hiking & Bicycling	Unimproved Trail		●	●					
	Paved Trail			●			●	●	
	Nature/Hiking Trail	●		●	●	●	●	●	●
	Mountain Biking Trail	●			●	●			
	Equestrian Trail	●		●	●	●			
	Cross-country skiing	●		●	●	●		●	●
	Snowmobiling					●			
Water Activities	Swimming Beach	●			●	●			
	Boat Launch	●	●		●	●			
	Boat Rental	●			●		●	●	●
	Canoeing/Kayaking	●			●		●	●	
	Shore Fishing	●	●		●		●	●	●
	Fishing Pier	●			●				●
	Boat Fishing	●	●		●		●	●	●
Winter & Seasonal Activities	Ice Fishing	●	●		●	●	●	●	
	Ice Skating					●			
	Hunting	●	●		●	●			
Interpretive Facilities	Nature Center					●			
	Nature Study Area	●				●	●	●	●
Court & Turf Games	Ball field						●	●	●
	Soccer							●	●
	Court Games				●	●		●	●
	Disk Golf							●	●
	Golf Course							●	●
Miscellaneous	Banquet/Event Facility							●	●
	Horse Stable				●	●			
Camping	Rustic Campsite	●	●		●	●			
	Modern Campsite	●			●	●			
	Canoe Camping							●	
	Cabin Rental	●			●	●			
	Group Camping	●				●		●	

Gregory State Game Area

This state game area is located partially in western Putnam Township. It is a wildlife refuge in which seasonal hunting, fishing, hiking, and camping are allowed. It incorporates the Unadilla Wildlife Area and includes the following activities and facilities:

- Hiking trails;
- Boat launch on Duck Lake;
- Hunting; and
- Fishing.

Pinckney State Recreation Area

This 11,000-acre recreation area spans Washtenaw and Livingston counties and is comprised of three major use areas: Silver Lake day use area, Bruin Lake campground, and Halfmoon day use facility. Activities and facilities include:

- Swimming and picnicking;
- An extended system of trails for hiking, mountain biking, and equestrian use including the Pinckney Crooked Lake Trail (5 miles), the Pinckney Losee Lake Trail (3.3 miles), the Pinckney-Potawatomi Trail (17 miles), the Pinckney Silver Lake Trail (2 miles), and the Pinckney Waterloo Trail (35 miles);
- Boat launches and boat rentals on Silver Lake;
- Fishing pier and lake fishing on Silver Lake;
- Modern and rustic campsites, cabins, and yurt;
- Cross-country and ice fishing; and
- Seasonal hunting.



Mike Levine Lakelands Trail State Park

This rail-to-trail is a multi-use regional trail from Hamburg Township to Stockbridge, running approximately 20 miles. The trail includes a paved pathway in Hamburg Township and portion of Putnam Township and a crushed stone surface beyond the M-36 trail crossing. The paved portion also offers a parallel equestrian trail.

The trail was opened for public use in 1994 and has seen several stages of improvements since then. The western branch of the trail is currently under development from Stockbridge south to the City of Jackson and will connect with the Falling Waters Trail in Jackson.

Hamburg and Putnam Townships' trail portions are leased by the townships from the MDNR. They are maintained and operated by the respective townships and the Friends of the Mike Levine Lakelands Trail in cooperation with the MDNR. The segment in Putnam Township was recently resurfaced and the trailhead at the Pinckney Depot was improved. In addition, the Depot was renovated with general interior and exterior cleanup efforts and a new roof.

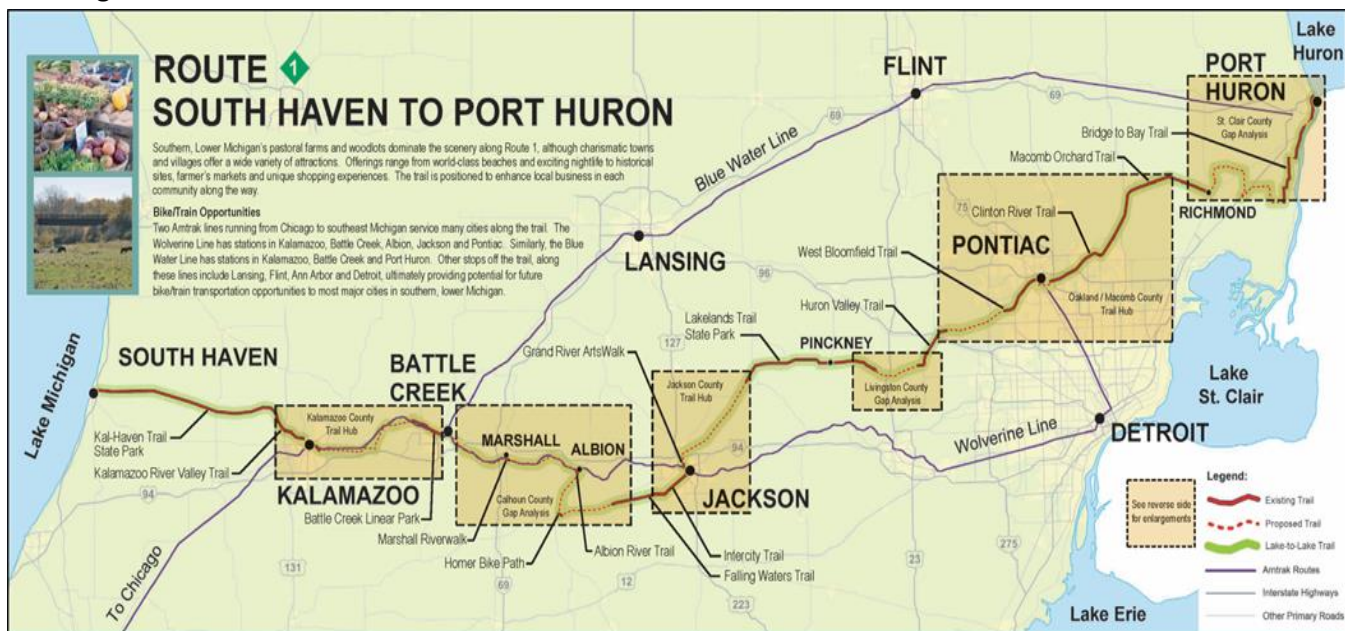
Trail Initiatives

The vision for trails and greenways in Livingston County has evolved to include a system of conservation corridors and trails. In addition to walk and bike routes along roadways and utility easements, many of the greenways are planned along river and stream corridors. Of particular interest to Putnam Township and the Village of Pinckney is the development of the Great Lake-to-Lake Trail and the State Iron Belle Trail.

The Mike Levine Lakelands Trail is an important link in Route 1 of Great Lake-to-Lake Trails, a statewide trail that was envisioned to provide a continuous shared-use trail from Lake Huron to Lake Michigan stretching 240-miles from South Haven to Port Huron. Spearheaded by the Michigan Trails and Greenways Alliance (MTGA), this Great Lake-to-Lake Trail follows the former Michigan Airline Railway. This trail has 178 miles existing and 108 miles yet to be constructed. The MDNR, Michigan Department of Transportation (MDOT), MTGA, and approximately 30 local jurisdictions are working to make this trail a reality. Figure 9 illustrates the different existing and proposed segments along the trail.



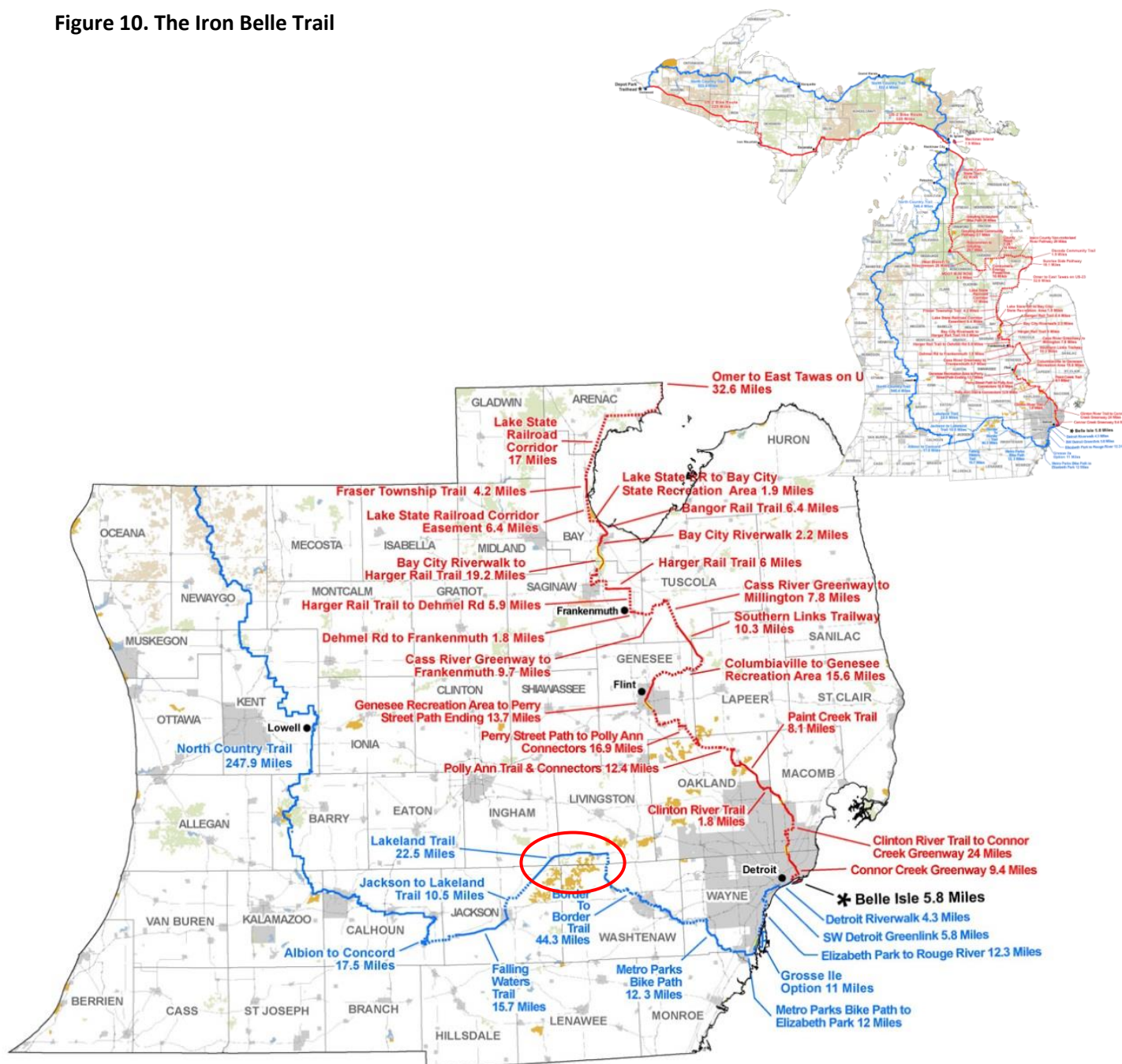
Figure 9. Route 1 of the Great Lake-to-Lake Trails



Source: MTGA, 2011

A portion of this Great-Lake-to-Lake Trail was also part of the planned Iron Belle Trail, the statewide trail initiated in 2013 to further Michigan's key role in the national network of trails and provide an economic driver for the state's tourism industry. As envisioned, this trail would connect Ironwood to Belle Isle along both a western and an eastern route through the State of Michigan. The western trail route shows a key segment which includes the Mike Levine Lakelands Trail traversing across the southwest corner of Livingston County. Figure 10 illustrates the routes with the blue western route representing a trail meant primarily for "hikers" and the red route, designed for "bicyclists."

Figure 10. The Iron Belle Trail

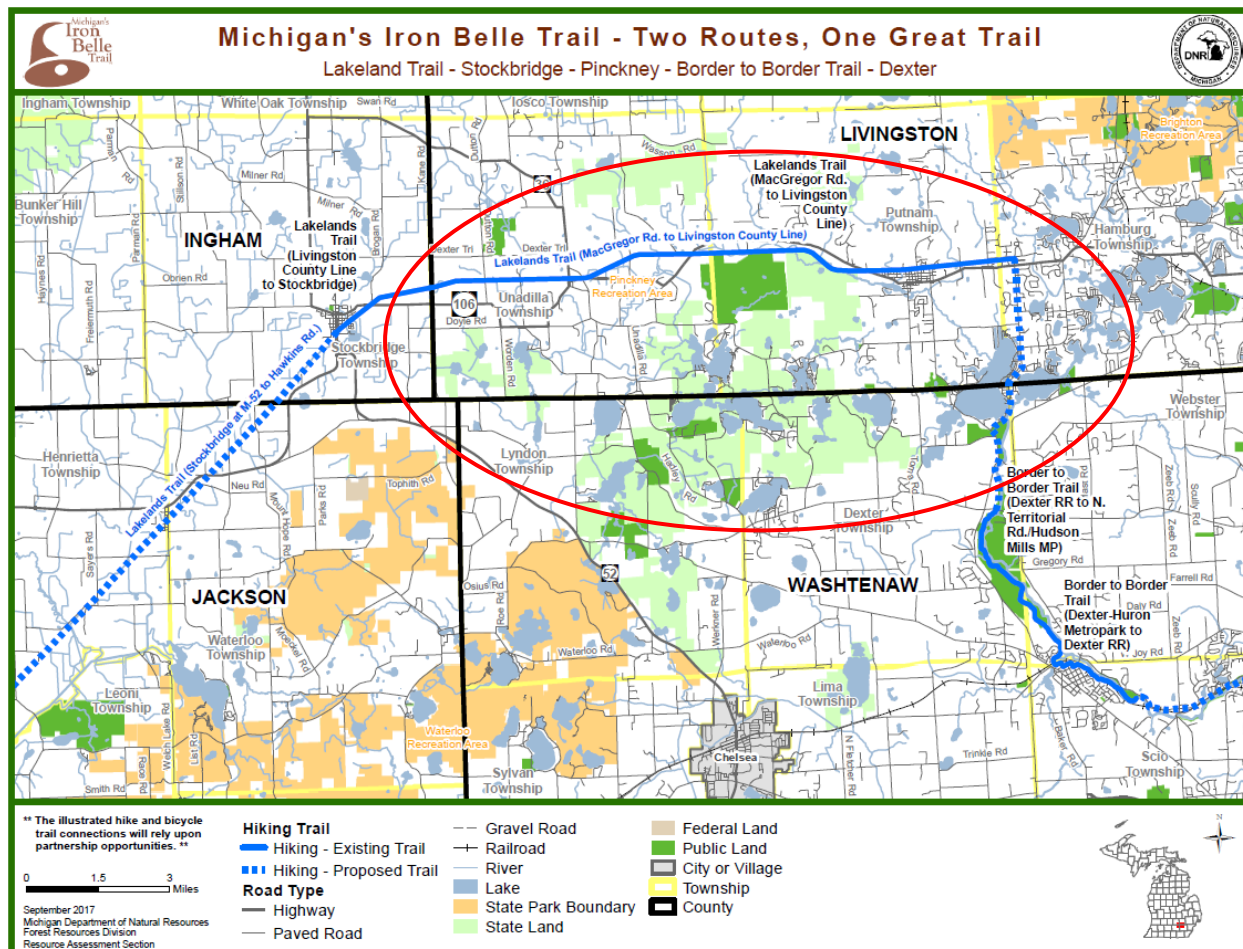


Source: MDNR, 2015

The Iron Belle Trail is on the national radar of the Rails to Trails Conservancy, the National Park Service, North County Trail Association and American Trails. The MDNR, MDOT, Michigan Economic Development Corporation (MEDC), and Michigan Department of Agriculture and Rural Development (MDARD) have shown support by identifying contacts and potential program resources aligning funding along their management areas.

The trail segment gap remaining to connect Hudson Mills Metropark to the Mike Levine Lakelands Trail is shown along Dexter-Pinckney Road and McGregor Road and has also been identified in SEMCOG's 2014 Bicycle and Pedestrian Travel Plan for Southeast Michigan as a key regional corridor and gap to complete the network.

Figure 11. Michigan Iron Belle Trail in Washtenaw, Livingston, Ingham, and Jackson Counties



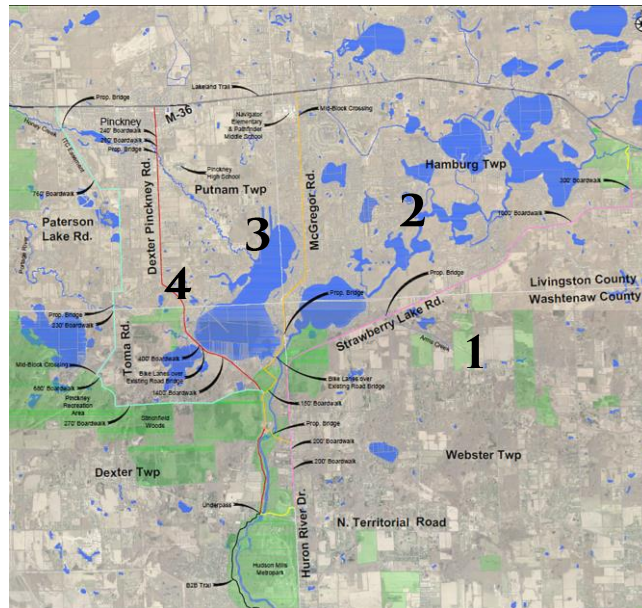
Source: MDNR, 2017

A feasibility study conducted for Hamburg Township looked at the feasibility of several alternative routes to fill the gap between Hudson Mills and the Mike Levine Lakelands Trail. The routes considered included:

1. Strawberry Lake Road;
2. McGregor Road;
3. Dexter-Pinckney Road; and
4. A route following Stinchfield Woods Road, Toma Road, and a utility easement.

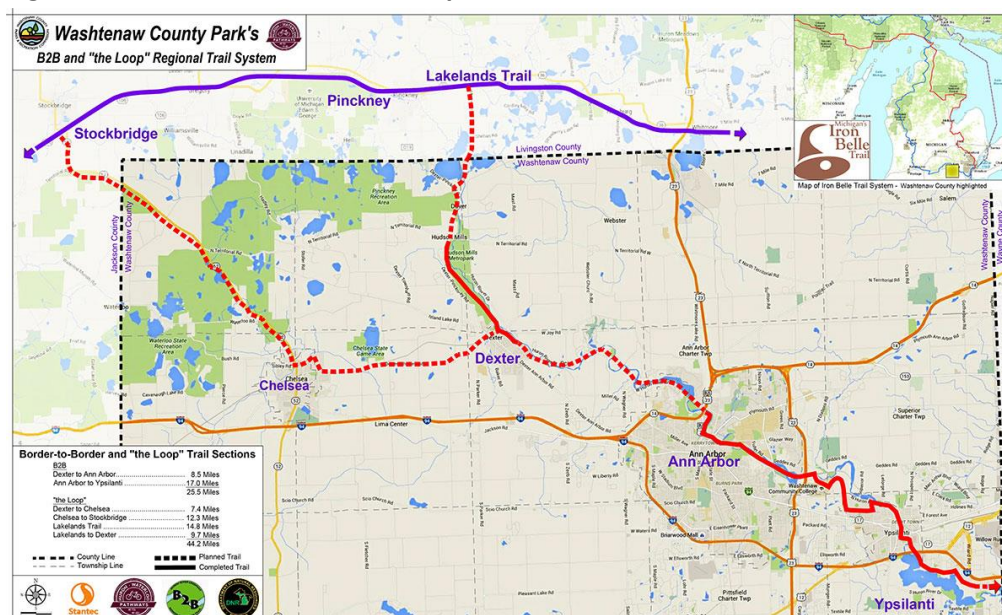
The study concluded that the Strawberry Road route alignment presented the best connector route in terms of ease of constructibility and lower project cost.

Figure 12. Hudson Mills to Mike Levine Lakelands Trail Routes



Concurrently, the Washtenaw County Parks and Recreation Commission had developed plans to route the Border-to-Border Trail through Chelsea to reach the Mike Levine Lakelands Trail in Stockbridge. After much consideration, this trail alignment has just recently been selected by the MDNR as the preferred Iron Belle Trail route. The Iron Belle Trail will now go directly west from Dexter to Chelsea and follow M-52 west to Stockbridge. The Mike Levine Lakelands Trail/Great Lake to Lake Trail will form a significant loop system with the Iron Belle Trail once the Hudson Mills-Mike Levine Lakelands Trail connector is established.

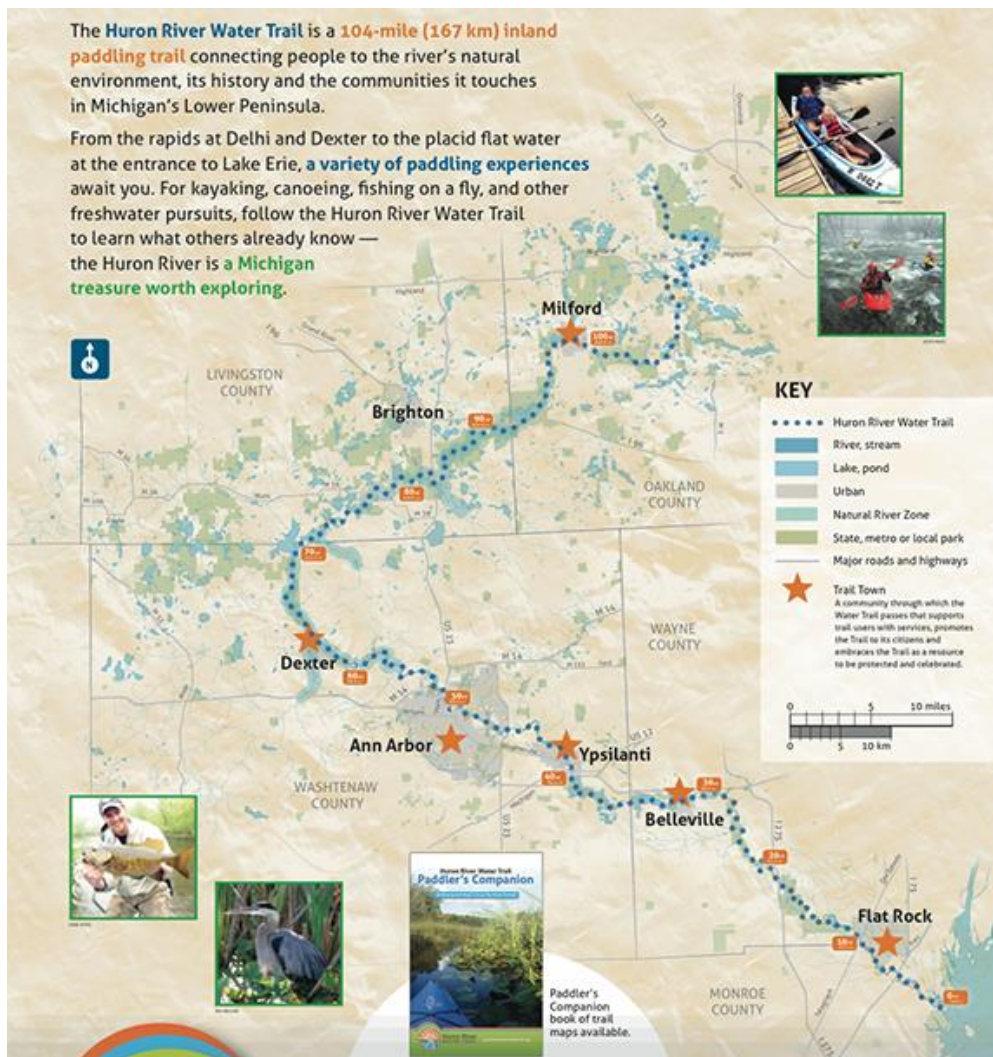
Figure 13. The Border-to-Border Loop Trail



Source: Washtenaw County Park's Loop Trail

Water trails have become an important recreation resource in Michigan. The regional Huron River water trail, located in proximity to Pinckney and Putnam, is an initiative of the Huron River Watershed Council to encourage the recreational use of the Huron River and continue to protect and restore its water quality. A number of communities, as shown on Figure 14 below, have become water trail towns. The water trail runs immediately outside the southeast corner of Putnam Township, from Dexter to Base Line Lake and continues northeast through Hamburg Township to Brighton and Oakland County.

Figure 14. The Huron River Water Trail



Opportunities for a local water trail have been identified along the Portage River from Bruin Lake in the Pinckney State Recreation Area through Putnam Township, which would connect to Portage Lake and to the Huron River water trail.

Honey Creek through Putnam Township and the Village of Pinckney may also present opportunities for a local water trail to Portage Lake. The two dams, which includes the Mill Pond dam in the Village, present some challenges. Returning the Creek to a free flowing stream by removing the dams as was done in Dexter is seen as ecologically beneficial for the creek's hydrology.

ACCESSIBILITY ASSESSMENT AND GRANT-ASSISTED PROJECTS

A critical component in planning for recreation facilities is providing access to accommodate the needs of all people, including those with disabilities. The ranking system suggested by the MDNR Guidelines (MDNR, 2016) was used to evaluate the accessibility of the area parks. The ranking system ranges from 1 to 5 as follows:

1. None of the facilities meet accessibility guidelines;
2. Some of the facilities/park areas meet accessibility guidelines;
3. Most of the facilities/park areas meet accessibility guidelines;
4. The entire park meets accessibility guidelines; and
5. The entire park was developed/renovated using the principles of universal design.

Each of the parks was evaluated using the MDNR ranking system noted. The elements evaluated include parking areas, paths of travel from parking to activity areas, the activity areas themselves, and support facilities such as restrooms and surfacing. Table 11 presents the results of this evaluation.

Table 12. Accessibility Assessment

Park	Rank	Description
Loy Bond Park	2	While the playground meets ADA standards, there are currently no accessible routes to the playground
Township Square	4	The Square has been brought into ADA compliance and meets accessibility guidelines

It is the intent of Pinckney and Putnam that current and future park projects comply with the American with Disabilities Act (ADA) regulations. Deficiencies will be corrected with park renovation and improvements.

The Village of Pinckney has not received any MDNR grant funds for parkland acquisition or development. Putnam Township received an MDNR grant (TF10-001, \$235,650) for the development of the Mike Levine Lakelands Trail.

A three-mile segment of the Trail from the Hamburg Township line to the M-36 crosswalk, was paved with 7 feet of asphalt and 3 feet of fine gravel and the remaining 3.3-mile segment from M-36 west to Unadilla Township was resurfaced with fine gravel surface. The project also included improvements of the Pinckney trailhead with installation of park amenities including parking, restroom, and other elements.





The MDNR funds were combined with Transportation Enhancement funds from the MDOT (\$765,213) and local funds (Pinckney DDA: \$5,000, Putnam Township: \$245,900) for the trail development as well as other state funds for a new roof and general exterior and interior renovations of the Pinckney Depot. Local funds, donations, and volunteer hours have also been part of the Mike Levine Lakelands Trail and the Pinckney Depot projects.

The Township supported by Ann Arbor SPARK is currently pursuing a Public Spaces and Community Places Patronicity project to seek funds for improving the Township Square. The funds would be generated through crowdfunding and would be matched with a grant from the MEDC. Some of the improvements considered include: vault toilet bathrooms, tree removal and replacement, playground equipment replacement and expansion, walking paths, bandshell, pavement repairs, red building improvement, and splash pad.

NEEDS ASSESSMENT

A critical component in the recreation planning process is determining the needs and desires of the community as a basis for an action plan to improve the park, trail, and recreation system. Needs and preferences provide the rationale for the formulation of goals and objectives that lead to an action plan. To assess needs and desires, consideration was given to current recreation trends and input from community stakeholders, public officials, and residents of Putnam Township and the Village of Pinckney.

PARK ACREAGE COMPARISON

The National Recreation and Park Association (NRPA) recommends a minimum amount of parkland to adequately serve a given population size. The purpose of the NRPA guidelines is to provide minimum parkland and facility development standards that are applicable nationwide for recreation planning purposes. While the NRPA standards are useful benchmarks addressing minimum park acreage, a parks and recreation system should be tailored to meet the needs of the community.

According to the NRPA, parks are categorized as mini-parks, neighborhood parks, community parks, and regional parks. The mini, neighborhood, and community parks are the *close-to-home* parks, designed to satisfy the recreational needs of local communities as described on the right. The Village and Township parks are considered *close-to-home* parks. According to NRPA standards, the suggested amount of *close-to-home* parkland is 6.25 to 10.5 acres for every 1,000 residents.

NRPA Close-to-home Park Land:

Mini-Park: Addresses limited recreational needs; serves an area less than ¼ mile distance.

Neighborhood Park: Is the basic unit of the park system and serves as the recreation and social focus of a neighborhood; focus is on informal active and passive recreation; serves an area ¼ to ½ mile distance and is uninterrupted by non-residential roads or other physical barriers.

Community Park: Serves a broader purpose than neighborhood parks; focus is on meeting community-based recreation needs and preserving unique landscapes and open spaces; usually serves two or more neighborhoods at ½ to 3-mile distance.

Regional parks serve a broader area (about a 40-mile radius) and focus on meeting the recreation needs of the region as well as preserving unique areas. For the Pinckney-Putnam area, regional parks include the state-owned recreation areas described in the preceding chapter. The NRPA also recognizes other types of parks such as school properties which can contribute to the local parks and recreation system.

Table 12 presents a comparison of the NRPA suggested parkland standards with existing parks based on a combined Village and Township population of 8,248 in 2010 and 10,284 in 2040. According to these standards, local parks do not meet the acreage for total *close-to-home* parkland. This disparity will increase over time when considering the projected 2040 population. Pinckney-Putnam residents, however, are well-served by the regional park facilities provided by the state that are located nearby.

Table 13. Comparison to Suggested Parkland Acreage Standards

Type of Park	NRPA standard Acres/ 1000 Pop.	Suggested 2010 Pop.: 8,248	Suggested 2040 Pop.: 10,284	Existing
Close to Home Parkland	6.25 - 10.5 Acres	52 – 86 Acres	64 – 108 Acres	42.8 Acres*
Regional Parks	15 - 20 Acres	124 – 166 Acres	154 – 206 Acres	3,500 Acres+
Pinckney Community Schools	-	-	-	137 Acres
Private Recreation Facilities	-	-	-	2,857 Acres

*: Includes the Mike Levine Lakelands Trail – 6.2 miles at an average right-of-way width of 50 feet.

STATE AND NATIONAL RECREATION TRENDS

Recreation trends on a national level and in Michigan provide insight into activities that show the greatest growth in popularity and therefore may affect the future direction of parks and recreation. The Outdoor Foundation regularly conducts national surveys to measure participation in physical activities and track changes from previous years. According to the Outdoor Foundation, nearly 50 percent of Americans (142 million) ages six and older participated in outdoor recreation in 2015. Table 13 lists the top five outdoor activities.

Table 14. National Sports Participation, 2015

Activity	Participation Percent	Participation Number
1. Running, Jogging & Trail Running	18%	51.5 million
2. Freshwater, Saltwater & Fly Fishing	16%	45.7 million
3. Road Biking, Mountain Biking & BMX	15%	43.1 million
4. Car, Backyard & RV Camping	14%	40.0 million
5. Hiking	13%	37.2 million

Source: Outdoor Participation Report, 2016, the Outdoor Foundation

These trends are consistent with trends observed in Michigan. According to a telephone survey of Michigan residents conducted as part of the 2018-2022 Michigan Statewide Comprehensive Outdoor Recreation Plan, the top ten outdoor recreation activities are:

1. Relaxing outdoors;
2. Walking;
3. Visiting parks or playgrounds;
4. Sightseeing and/or driving for pleasure
5. Visiting nature centers or historic sites;
6. Swimming outdoors;
7. Picnicking
8. Fishing;
9. Team or individual sports; and
10. Wildlife viewing and/or photography.

Monitoring parks and recreation trends is important in determining how parks and recreation services should evolve. The implication of the trends noted above along with the demographic and physical characteristics of the Pinckney-Putnam area can be summarized as follows:

- **Recreation facilities and programs should respond to the expected increase of seniors.**
- **There is a need for more pathways to accommodate bicycle and pedestrian recreation use and to contribute to a healthy and walkable community. Pinckney and Putnam have been forward-thinking and have made great progress with the Mike Levine Lakelands Trail improvements.**
- **Honey Creek and the Portage River are great natural assets for the area. Encouraging their use for recreation while maintaining their ecological functions is a priority for the community.**

PUBLIC INPUT

The lakes, natural surroundings, state recreation areas, trails, and outdoor recreation are the area's greatest assets that support a healthy and active community. Village and Township public officials strive to be responsive to residents' needs and desires for parks and recreation.

To develop a master plan that reflects the recreation preferences, needs and values of community residents, the planning process included community outreach. Public input was received through a survey of residents during the months of October and November 2017.

Residents were invited to provide ideas and suggestions for the communities' park, trail and recreation system through an online survey available from the Township's and Village's website. The survey was advertised in the Village and Township newsletters, through social media pages, flyers, and at community events. The online questionnaire was designed to solicit feedback on a broad spectrum of issues for the community. More than 210 surveys and comments were received and compiled. Key findings from the surveys are outlined below. A complete tally of the responses gathered is attached in the appendix of this report.

Park Visitation

The top three community parks in terms of visitation are:

1. Mike Levine Lakelands Trail;
2. Town Square; and
3. Loy Bond Memorial Park.

The top three regional parks in terms of visitation are:

1. Pinckney State Recreation Area;
2. Hudson Mills Metropark; and
3. Brighton State Recreation Area.

New Park Facility Preference

In general, respondents top three choices for preferred recreation amenities in order of importance are:

1. Walking/running/bicycling paths or trails;
2. Nature trails; and
3. Playground structures.

The top three facilities or parks that respondents are most likely to visit are those including:

1. Bicycle trails and walking/running paths;
2. Nature preserves with nature areas and nature/hiking trails; and
3. Parks with playgrounds and benches.

Community Park Improvements

The top priorities for park improvements are:

1. Maintain/renovate existing parks;
2. Develop more paths and trails in the parks;
3. Develop more paths within parks and to connect community facilities;
4. Develop a water trail; and
5. Add wayfinding signage and trail amenities to the Mike Levine Lakelands Trail.

A summary of specific suggestions for park improvements are presented in Table 14 on the next few pages. The improvements were noted from the survey and subsequently prioritized by the Parks and Recreation Master Plan Committee at a public meeting which took place on November 14, 2017. The number represents the votes.

Table 15. Summary of Park Improvement Suggestions

Suggested Park Improvements	votes
Loy Bond Memorial Park	
• Upgrade playground	4
○ Replace slide	1
○ Provide more equipment (e.g. merry-go-round)	
• Add a paved/limestone pathway	3
• Add benches	1
• Install a picnic pavilion	1
• Include more recreation facilities (volleyball, baseball, skate park)	1
• Plant more trees	
• Offer Wi-Fi	
Town Square	
• Provide permanent restrooms	4
• Upgrade playground	3
○ Refurbish play surface	1
○ Add more play equipment	
• Install additional benches	1
• Add more park features	
○ Garden	1
○ Fountain	1
○ Area for farmers market	
• Improve general upkeep (grass)	1
• Include more recreation facilities (basketball, skate park)	
• Add picnic tables and more protected picnic areas	

Suggested Park Improvements	votes
• Provide more walkways	
• Improve lighting	
• Rename to Pinckney Town Square	
• Offer Wi-Fi	
• Increase programming of festivals	
Mike Levine Lakelands Trail	
• Add more Connections	1
○ To downtown Pinckney	
○ To neighborhoods	
○ To schools	
○ to Border-to-Border Trail	1
• Provide trail amenities:	
○ Map, direction signs	1
○ Mile Markers (1/4 mile)	1
○ Bike racks	
○ Furnishings: benches, trash receptacles, pet waste dispensers, picnic tables, drinking fountain with water bottle refill	5
○ Bicycle repair station (fix your bike)	4
• Improve crosswalk at Main Street and D-19	
• Refurbish the trail's surface (pave)	1
• Widen the trail	
• Establish a program for invasive plant removal and native plant restoration	
• Improve trail safety with	
○ Emergency system	
○ Lighting	
• Increase general upkeep (horse/pet droppings)	
Walking/Biking Trail System	
• Support and promote the establishment of the Iron Belle connector from the Border-to-Border Trail to the Mike Levine Lakelands Trail	6
• Develop connector to High School	5
• Install site amenities such as benches, trash receptacles, and signs along the trails	2
• Develop a community walking map and walking club	2
• Attract support and sponsors	
• Install bicycle accommodations along Village Streets through pavement markings and	

Suggested Park Improvements	votes
signs	
Other Improvements	
<ul style="list-style-type: none"> Improve the Honey Creek-Mill Pond property with trails and boardwalks, viewing platforms, fishing dock, and access to the pond for kayaking/canoeing, fishing and skating 	4
<ul style="list-style-type: none"> Add walkways and other amenities at the Township Hall property. 	2
<ul style="list-style-type: none"> Form a public/private partnership to develop portion of the former Village Education Center site with walkways, updated playground and open space 	3
<ul style="list-style-type: none"> Develop the DPW property with vehicular and pedestrian access, picnic area/shelter, trails, and preservation of environmentally sensitive areas. Other improvements could include the development of a viewing platform and access to the lake for ice fishing and skating 	1
<ul style="list-style-type: none"> Other Suggestions: 	
<ul style="list-style-type: none"> <ul style="list-style-type: none"> Improve ACO property 	4
<ul style="list-style-type: none"> <ul style="list-style-type: none"> Improve former Elementary School playground 	

Support

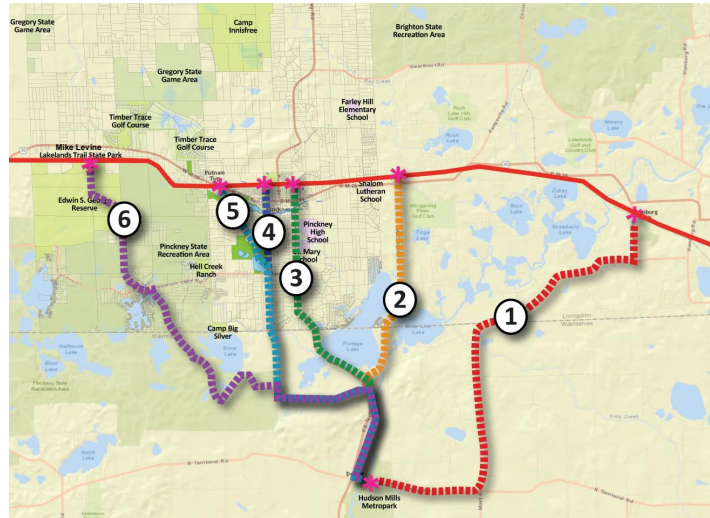
When asked whether they would support a future millage for the operation, maintenance, and development of community parks and trails, 74 percent of respondents indicated yes, 13 percent indicated no, and 13 percent had no opinion.

Trail Preference

The route alignment preference for a regional trail connector from Hudson Mills Metropark to the Mike Levine Lakelands Trail are:

1. Route 3: Dexter-Pinckney Road;
2. Route 2: Dexter-Pinckney Road and McGregor Road; and
3. Route 5: Stinchfield Woods Road, Toma Road and ITC Corridor.

Figure 15. Hudson Mills to Mike Levine Lakelands Trail Options



The top priorities for local connections and bicycle/pedestrian accommodations along road corridors for the community include, in order of priority:

1. Connection 1: Dexter-Pinckney Road connection to Pinckney High School and St. Mary School;
2. Corridor 3: Bicycle accommodations along M-36 from Village east boundary to Putnam Township Hall through bike lane, shared road, and paved shoulder markings;
3. Connection 4: Mill Pond and Honey Creek pathway from Dexter-Pinckney Road to Cedar Lake Road;
4. Corridor 5: Bicycle accommodations along Howell Street from Patterson Lake Road to Mike Levine Lakelands Trail through pavement markings and new path on lot adjacent to Library; and
5. Connection 2: Howell Street to Dexter - Pinckney Road through subdivisions.

Figure 16. Community-wide Priority Connections



PUBLIC REVIEW AND PUBLIC HEARING

Once a draft Parks and Recreation Plan was completed, it was made available for a 30-day public review. The availability of the draft plan for public review was advertised in the local paper and copies were placed at various locations in the Village and Township including the Village and Township Halls, the Community Public Library, and the communities' websites.

After the Parks and Recreation Master Plan Committee considered the comments received, minor changes were made to the document and the plan was recommended for adoption by Village Council and Township Board.

The public input into the plan culminated in advertised public hearings held on February 21st, 2018 for Putnam Township and February 26, 2018 for the Village of Pinckney. After the hearings, the Village Council and Township Board adopted the plan by resolution (See Supporting documents).

GOALS AND OBJECTIVES

The Pinckney-Putnam Parks and Recreation Master Plan Committee has formulated goals and objectives for the next five years. They are broad enough to encompass the suggestions expressed from the public, Village and Township officials, staff, as well as to meet the observed deficiencies in the recreation resources of the area. They also consider demographic changes, current and anticipated growth and development, the area's physical resources, and recreation trends.

GOALS

The Village of Pinckney and Putnam Township will provide outdoor recreational opportunities for persons of all ages and all abilities that are clean and safe.

The Village of Pinckney and Putnam Township will consider the future needs of the community and take actions to dedicate parkland in order to meet future recreational needs and preserve and enhance the character of the community.

OBJECTIVES

1. Maintain and improve existing parks and community facilities

It is important to maintain and improve existing park facilities to ensure continued enjoyment and safety. This could include upgrading aging equipment, removing barriers, and maintenance. This could also include developing new outdoor facilities in response to the changing needs of Township and Village residents.

- A. Maintain existing park facilities including Loy Bond Park and the Town Square;
- B. Upgrade aging play equipment;
- C. Remove barriers;
- D. Improve on-going maintenance (trash removal); and
- E. Develop new recreation facilities.

2. Continue to improve the Mike Levine Lakelands Trail and add new amenities and trail connections

The Mike Levine Lakelands Trail continues to be recognized as a priority for the community. In addition, the establishment of a network of walk/bike ways connecting the trail with community facilities, schools, and the state recreation areas is also needed for the community.

- A. Brand Pinckney as a Trail Town along the Great Lake-to-Lake and Iron Belle State Trails;
- B. Support and promote the establishment of the Iron Belle connector from the Border-to-Border Trail to the Mike Levine Lakelands Trail;
- C. Establish a walk/bike connection from the Village to the High School and the development of additional walk/bike routes within the community; and
- D. Promote the recognition and development of water trails (Portage River and Honey Creek) with water access sites.

3. Acquire new parkland

Land acquisition should focus on preserving and protecting high quality natural areas, green infrastructure, and open space. Coordination with the communities' Planning Commissions, Township Board, and Village Council will be necessary to preserve open space and dedicate parkland in new developments. Properties for parkland acquisition should offer both passive and active recreation potential.

- A. Seek opportunities for parkland acquisition particularly around the Mill Pond area and other areas that presents opportunities for park and trail development such as the former Camp Innisfree property; and
- B. Encourage the acquisition/development of parkland on underutilized properties (ACO Industries property, People's Church, Township Hall).

4. Establish a mechanism to promote and administer parks and recreation

Improved coordination with the state, local schools, Livingston County, and other area recreation providers would maximize the communities' recreational resources. A joint Village/Township parks and recreation commission could play a role in the coordination of services with other recreation providers by focusing on meeting community recreational needs and gathering support for parkland acquisition and development. A means of generating revenues through grants, sponsorships, and donations where possible must become a priority to support park projects.

- A. Improve coordination with the state, local schools, Livingston County, and other area recreation providers;
- B. Create a joint Village/Township Parks and Recreation Commission; and
- C. Encourage a means of generating revenues through grants, sponsorships, and donations to support park projects.

ACTION PROGRAM

The action program details the manner in which the goals and objectives will be met. It includes a list of specific projects, as well as an improvement schedule with suggested capital improvement projects, a sequence of tasks, and strategies for implementation.

ACTION PLAN

The following describes the specific projects and actions which are recommended to be accomplished during the planning period. Illustrations and plans showing the proposed park improvements and actions are also included to depict the proposed actions.

1. Maintain and upgrade the existing Township Square and Loy Bond Park

This action includes replacing old equipment which is in a state of disrepair, outdated, or is dangerous, as well as improving the appearance of the parks and properties through appropriate landscaping and maintenance. All upgrades must be in compliance with the Americans with Disabilities Act and efforts should be taken to remove all existing barriers to universal access. Proposed projects include:

- Maintain the Town Square with playground equipment repair/update, safety surface refurbishing, Red Building and shelter repairs/maintenance, and grounds upkeep. Continue to enhance community events taking place at the Square. Specific actions for the Square include:
 - Implement the improvements possibly funded through the MEDC Patronicity project; and
 - Prepare a development plan for the park which would include a concept and implementation program for the development of future recreation amenities including support facilities such as a permanent restroom, picnic areas, and pavilion.

Figure 17. Township Square Proposed Actions



- Implement proposed improvements at Loy Bond Park including walkways, exercise equipment, and shade structures.

Figure 18. Loy Bond Park Development Plan



2. Develop facilities on currently owned Township, Village, or other properties

This action includes preparing development plans with implementation strategies for community facilities.

- Improve the Honey Creek - Mill Pond property with trails and boardwalks, viewing platforms, fishing dock, and access to the pond for fishing and skating.
- Consider adding walkways and other amenities at the Township Hall property.
- Consider developing portion of the former Village Education Center site (Veteran's field) in partnership with People's Church with playground updates and walkways.
- Consider leasing and improving Fireman's Park and the Old Pinckney Elementary School property with playground update.
- Consider developing water access sites to promote the use of water trails in the community along the Portage River and Honey Creek.

Figure 19. Honey Creek-Mill Pond Site

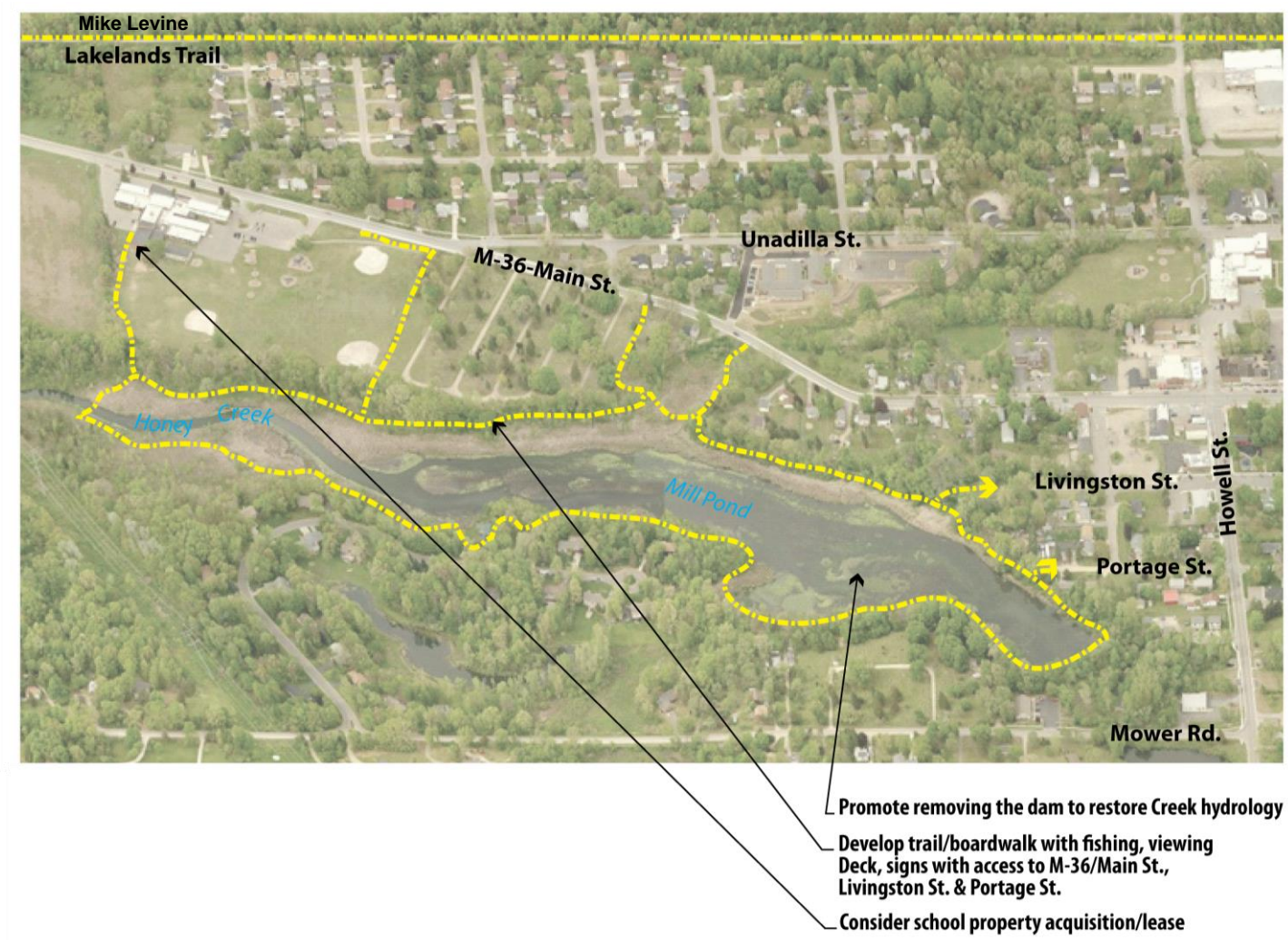
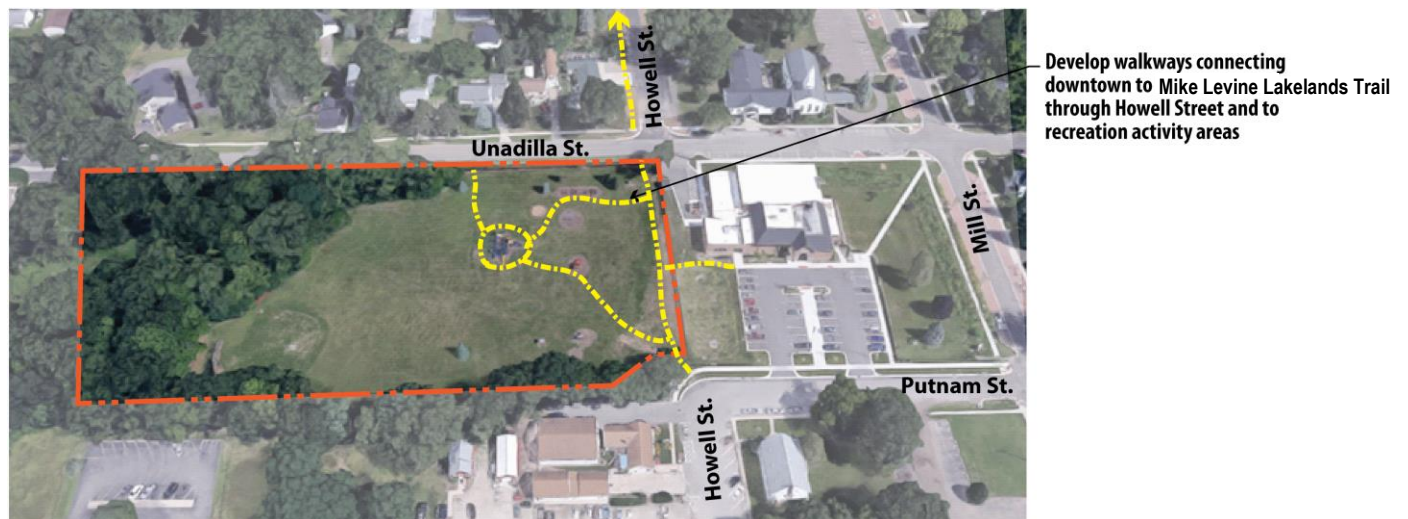


Figure 20. Township Hall Property



Figure 21. Community Public Library and Former Village Education Center Sites



3. Improve the Mike Levine Lakelands Trail

Developing the Mike Levine Lakelands Trail is a continued high priority for the community.

- Complete the renovation of the Pinckney Depot and consider its re-use.
- Provide additional access to the trail.
- Install community way finding signs and additional pedestrian amenities along the trail such as benches, trash receptacles, picnic areas, fix-it bike stations, and other.
- Continue to brand the community as a **Trail Town** and promote special events for the trail.

Figure 22. Mike Levine Lakelands Trail Potential Amenities

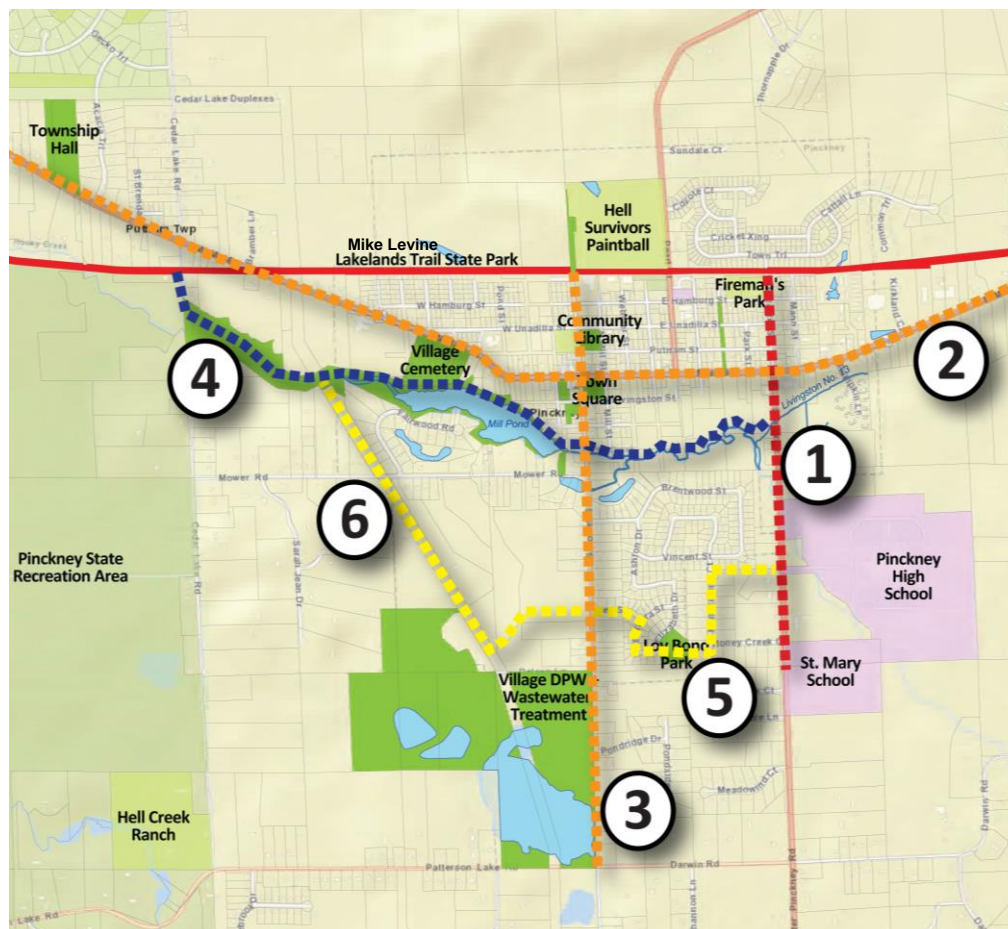


4. Develop a continuous community-wide walk/bike way system

There is a strong need to develop walk/bike ways that interconnect the Mike Levine Lakelands Trail with parks, community facilities, schools, and state land. This action could include:

- Develop bicycle and pedestrian accommodations and connections with priorities as follows:
 1. A shared-use path along Dexter-Pinckney Road to Pinckney High School and St. Mary School with connection to Mike Levine Lakelands Trail via on-street bicycle accommodations north of M-36;
 2. Bicycle accommodations along M-36 from Township Hall to Village east boundary through bike lanes, shared road, and paved shoulder pavement markings;
 3. Bicycle accommodations along Howell Street from Patterson Lake Road to Mike Levine Lakelands Trail through pavement markings and a new shared-use path on the property adjacent to Library;
 4. A shared-use path along Mill Pond and Honey Creek from Cedar Lake Road to Dexter Pinckney Road;
 5. A shared-use path from Howell Street to Dexter-Pinckney Road through subdivisions; and
 6. Shared-use path from Howell Street through the Wellbridge property to the ITC corridor.
- Install site amenities such as benches, trash receptacles, and signs along the system.
- Develop a marketing strategy for the system to attract support and sponsors, which could translate into a community walking map and walking club.

Figure 23. Community Walk/Bike Way System



5. Acquire and develop future parkland

Land acquisition for developing new community parks is also identified as important to the community. Future park sites should be large enough for a variety of recreation uses such as walkways, trails, picnic areas, and active recreation use. Natural features providing habitat preservation and nature related activities would also be desirable.

Acquiring additional land or easement to enhance access to Mill Pond is recognized as significant for the community. The former Camp Innisfree site also presents a significant opportunity for parkland acquisition as it is a large property adjacent to Gregory State Game Area and contains existing recreational facilities and high-quality natural features.

It will be important to work with the Township Board, Village Council, and the communities' Planning Commissions to ensure parkland needs are considered in the review of new developments and to encourage and develop regulations for developers to set aside land for park facilities.

6. Administration and funding

- Create a joint Parks and Recreation Commission between Putnam Township and the Village of Pinckney and a Friends of Pinckney-Putnam Parks and Trails group. The Commission should oversee the implementation of the current Parks and Recreation Master Plan.
- Facilitate and promote the shared-use of the area's parks and recreation facilities including the state, county, and other area recreation providers as well as Township and Village facilities by community groups.
- Seek grants and sponsorships to support the capital improvement projects mentioned above. A future parks and recreation commission should advocate and promote the value and benefits of parks and recreation by reaching out to the community. A future commission could also explore the feasibility of a millage for parkland acquisition and park development.

PROJECT SCHEDULE

Table 15 lists the individual projects along with the specific tasks to be accomplished, the project objective reference, a cost estimate, and potential funding sources. In addition, the projects are listed in a sequential order and a time frame for completion has been assigned. Short-term (ST) projects are recommended for completion within one to two years while long-term (LT) projects may take longer to be completed, within five to six years. Mid-term is between the two (MT).

Table 16. Capital Improvement Schedule

Project/Tasks	Obj	Cost Estimate	Funding Source	Time Frame
Existing Parks				
Implement 2018 planned improvements for Town Square through the MEDC Patronicity project	1	\$75,000	Crowdfunding, MEDC & General Fund	ST
Prepare future development plan for Town Square	1	\$5,000 – \$10,000	General Fund	ST
Build walkways and picnic/seating area at Loy Bond Park	1	\$75,000	General Fund, Grants & Donations	ST
Enhance programming of community events at the Township Square	1	To be determined	DDA & General Fund	ST
New Park Facility Development				
Improve the Honey Creek-Mill Pond property with pedestrian access and trails/boardwalks around pond	2	\$150,000 - \$200,000	General Fund, Grants & Donations	MT
Consider improving Fireman's Park with playground update	2	\$50,000	General Fund, Grants & Donations	ST
Consider developing walkways and other amenities at the Township Hall property	2	\$30,000	General Fund, Grants & Donations	MT
Consider improving portion of the former Village Education Center site in partnership with People's Church with playground update and walkways	2	\$75,000 - \$100,000	General Fund, Grants & Donations	ST
Mike Levine Lakelands Trail Improvements				
Continue to renovate the Pinckney Depot	3	To be determined	General Fund, MDOT TAP & other grants & Donations	MT
Provide additional access to the trail	3	To be determined	General Fund, Grants & Donations	On-going
Install community way finding signs and pedestrian amenities along the trail such as bike racks, benches, trash receptacles, picnic areas, fix-it bike stations	3	To be determined	General Fund, Grants & Donations	On-going
Create and promote special events for the trail	3	-	General Fund	On-going

Project/Tasks	Obj	Cost Estimate	Funding Source	Time Frame
Community-Wide Walk/Bike Way System				
Develop path to High School and St. Mary School	4	To be determined	General Fund, Grants & Donations	ST
Develop bicycle accommodations along M-36 and Howell Street	4	To be determined	General Fund, Grants & Donations	
Develop a shared-use path along Mill Pond and Honey Creek	4	To be determined	General Fund, Grants & Donations	
Develop a shared-use path from Howell Street through Wellbridge and the ITC corridor	4	To be determined	General Fund, Grants & Donations	
Install benches, trash receptacles, signs and other pedestrian amenities	4	To be determined	General Fund, Grants & Donations	ST-LT
Develop a walking club and a walking map	4	-	General Fund, Grants & Donations	MT
Parkland Acquisition				
Acquire land for the development of community parks which offer a location, setting, and size appropriate for a variety of passive and active recreational uses	5	To be determined	General Fund, Grants & Donations	On-going
Administration & Funding				
Create a joint Parks and Recreation Commission and a Friends of Pinckney-Putnam Parks and Trails group	6	-		
Meet and discuss opportunities for sharing park facilities and to coordinate recreation programs with the DNR, Pinckney Public Schools, and local recreation groups	6	-		On-Going
Identify and seek fund raising and grant opportunities	6	-		On-Going

IMPLEMENTATION STRATEGIES

To accomplish the recommended actions during the next five years, it will be necessary to secure adequate funding. The current budgets provide a limited amount of money for parks and recreation facilities. Therefore, the following strategies are recommended in order to proceed as planned.

Apply for Federal Funding

At the federal level, MDOT, in conjunction with SEMCOG, funds Transportation Alternatives Program (TAP). A minimum 20 percent local match is required for proposed projects and applications are accepted online on an on-going basis. Activities may include:

- Provision of facilities for pedestrians and bicycles including new or reconstructed sidewalks, walkways, curb ramps, bike lane striping, wide paved shoulders, bike parking, off-road trails, bike and pedestrian bridges, and underpasses;
- Provision of safety and educational programs for pedestrians and bicyclists designed to encourage walking and bicycling; and
- Acquisition, planning, designing and constructing abandoned railway corridors.

Apply for State Funding

At the state level, the Michigan Natural Resources Trust Fund (MNRTF) and the Land and Water Conservation Fund (LWCF) continue to be the primary funding sources for parkland acquisition and development. The new Recreation Passport grant also offers some state funding to local units of government.

The MNRTF provides funding for the purchase and development of parkland for natural resource-based preservation and recreation. Grant proposals must include a local match of at least 25 percent of the total project cost. There is no minimum or maximum for acquisition projects. For development projects, the minimum funding request is \$15,000 and the maximum is \$300,000 in 2018. Applications are typically due April 1st.

The LWCF is a federal appropriation to the National Park Service, which distributes funds to the MDNR for development of outdoor recreation facilities. The focus of the program has recently been on meeting community recreation needs such as playgrounds, picnic areas, skate parks, ball fields, soccer fields, and walking paths. Minimum grant requests were \$30,000 and maximum grant requests were \$150,000 in 2016. The match percentage is 50 percent of the total project cost. Applications are due on April 2nd.

The Recreation Passport grant program offers funding for the development of outdoor public recreation facilities for local units of government. Minimum grant requests are \$7,500 and maximum requests are \$150,000 in 2018. The local match obligation was 25 percent of the total project cost. Applications are usually due on April 2nd as well.

Other funding conducted in partnership with the MDNR is available through other state government divisions, such as the Fisheries Division (Inland Fisheries Grants) and the Forest Resources Division (Community Forestry Grants).

The Inland Fisheries programs consider projects that enhance habitat and fisheries, riparian property for public fishing use, water quality, and ecology. While not currently offered, they may become available in the future.

Municipalities may use Community Forestry grants to develop a management plan for a municipal forest which would include a component targeting outreach to private landowners. Grant requests may be up to \$20,000 depending on the project type and applications are usually due in the middle of the summer. DTE Energy and Consumers Energy also offer tree planting grants for up to \$3,000 to local municipalities in their service areas.

Apply for Other Grant Funding

The MDNR Iron Belle Trail grant provide funds for the planning, design, and/or engineering for the core Trail route, along with the purchase of Iron Belle Trail signage for completed trail segments. The maximum request is \$30,000 and matching funds are not required. Grant proposals are due January 5, 2018.

There are also a variety of smaller grant programs available for the establishment of greenways/pathways or greenway-related facilities such as Bikes Belong Coalition. The Bikes Belong Coalition is sponsored by members of the American Bicycle Industry. Their mission is to put more people on bikes more often. The program funds projects in three categories: facility, education, and capacity building. Requests for funding can be up to \$10,000 for projects such as bike paths, trails, lanes, parking, and safe routes to school. Applications are reviewed on a quarterly basis.

Seek Other Sources of Funding

Putnam Township and the Village of Pinckney should investigate additional sources of funding. Seeking donations, attracting sponsors, and seeking out other revenue sources are methods that should continue to be pursued aggressively to raise funding for park acquisition and development. The MEDC patronicity project that the Township is pursuing is a good example of innovative funding. In addition, the possible establishment of a recreation authority could be considered to increase the funding base for the construction and operation of specific park improvement projects.

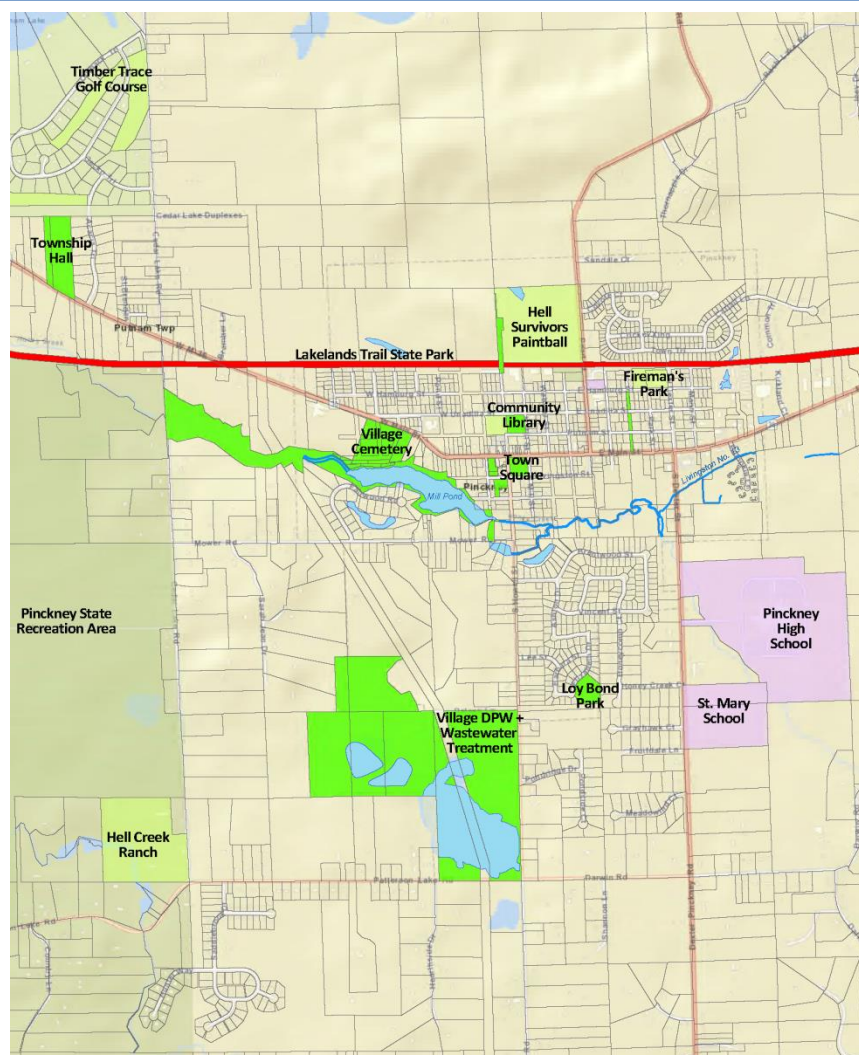
SUPPORTING DOCUMENTS

COMMUNITY SURVEY

The planning process for the Pinckney-Putnam Parks and Recreation Master Plan included public input into the plan which was received through an online survey and public meetings. The survey took place during the month of October and November 2017 and a total of 210 responses were received. Village and Township residents were invited to provide opinions and ideas for improving community parks. The survey was advertised through a flyer and postings on both the Village and Township websites and Facebook pages. A complete tally of the responses gathered follows:

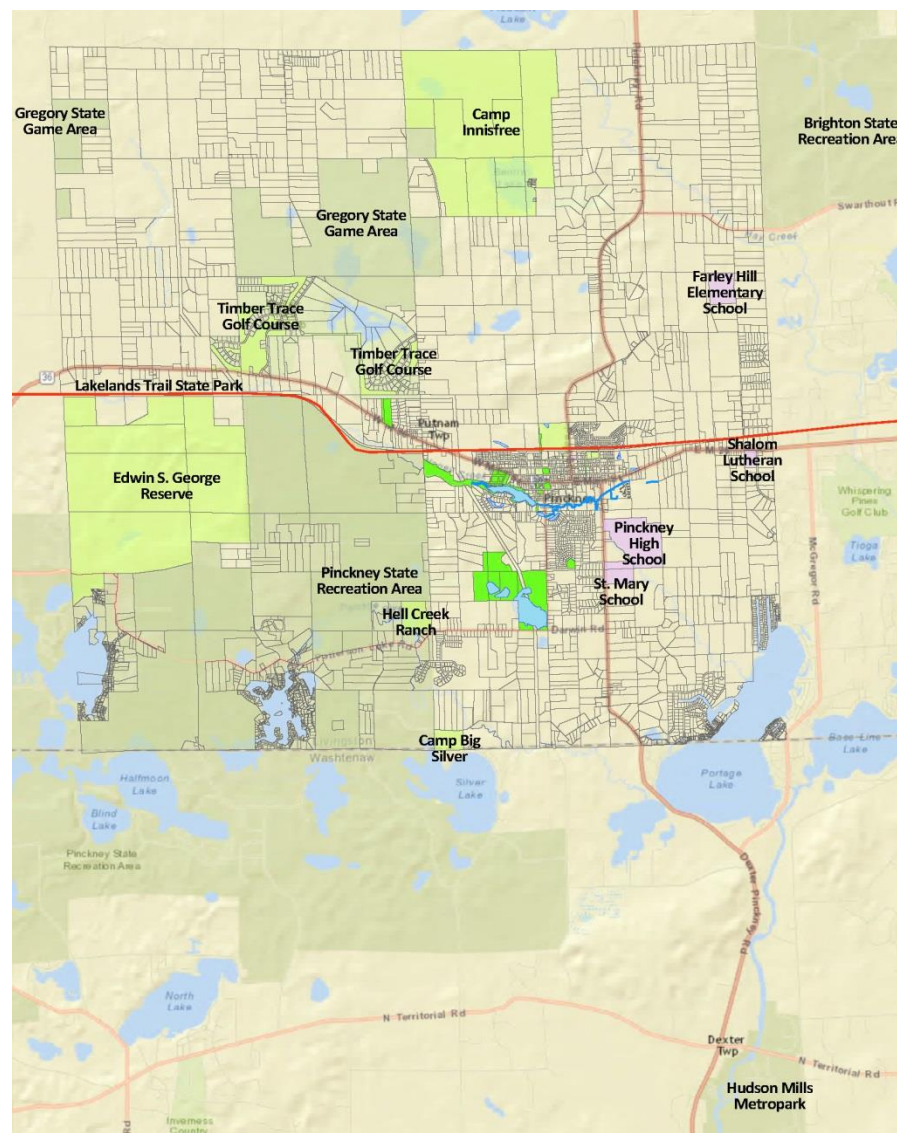
1: How many times have you or a member of your household visited our community parks, open spaces and trail in the past year?

	Never	5 times or less	6 to 10 times	Over 10 times
Loy Bond Memorial Park	125	35	6	32
Town Square	10	88	30	79
Mike Levine Lakelands Trail	19	42	31	114
Fireman's Park	146	32	6	8
Park by Community Library	95	71	14	17
Putnam Township Hall	94	74	11	14



2: How many times have you or a member of your household visited our regional parks in the past year?

	Never	5 times or less	6 to 10 times	Over 10 times
Hudson Mills Metropark	46	88	29	40
Pinckney State Recreation Area	47	89	23	44
Brighton State Recreation Area	77	75	23	21
Gregory State Game Area	157	25	6	6
Other (please specify)				
• Hell creek ranch				
• Kensington Metropark				
• Island Lake State Park and Kensington Metropark				
• Kensington Metropark				



3. Considering Loy Bond Memorial Park, what were the primary reasons you visited this park, what did you most enjoy during your visit, and are there improvements you might suggest?

Reason for visit	Most enjoyable feature	Suggested improvements
playground for kids	playground	benches for parents
Walking with grandchildren	Playground equipment	Keep maintained
Quiet, spacious park that our kids enjoy	Space	Update playground equipment
Dog walk	Open space	
Walk		Trees
Children played on the playground.	The playground.	None
dedication	nice open space for neighborhood	sidewalk walking path; basketball courts
Taking my grandson to play on the playground...		
Play with kids	Swings	Replace the slide with a plastic one
I run by it		Needs more equipment and a paved or gravel walking/running trail would be awesome
Close and open space	Baseball field	More stuff put in
Something to do with the kids		
Relaxing	Trees	Cleaner
walking		
Kids playing		
Leisure	View	None
I live in the subdivision	Baseball field and memorial tree for Geoff	Benches, more play equipment
Relax	Nature and birds	
Walk with kids		
My daughter to run around	Don't remember	None, too much cost
Meet up with friends	Swings	Pavilion and merry go round. These would be a great scout project
The park with the kids		
Kids, relax, get outside		Wi-Fi more benches, maybe skate park
	Relaxing	Skate park for kids
Near friend's house		
Grandkids		Needs all around update.
Playground or the beach or the trails	People, nature, people being positive	
Never		
Son's friend lives in neighborhood	Private like	More information about volleyball? baseball?
Walk		

4. Considering the Township Square, what were the primary reasons you visited this park, what did you most enjoy during your visit, and are there improvements you might suggest?

Reason for visit	Most enjoyable feature	Suggested improvements
events being held in town and to just enjoy the park while walking around	play area and garden	improve ice rink during the season
Convenience to trail, variety of play structures/areas	rock wall	repairs & additional play structures/areas (especially something targeting a younger age range)
Playground for kids		
Art in the Park	Close to town/businesses	Continue to maintain play area. Is there a drinking fountain?
Many	Gazebo	
Location	Being downtown	More connecting sidewalks to access parks without having to drive or fear being run over
downtown events	activities going on	none
seasonal township activities		
Art in the park, playground equipment, stops while walking	Trees	
Planned event	Family Friendly	
Kids enjoy the playground, we like the central location of the park and being downtown	Central location and nice playground equipment; great place for public gatherings	Replace surface cover in playground
Art in the Park, Entertainment	Art in the Park.	
Halloween event, Art in the park		
Activities in the park	Music	
	playground equipment for our grandson 16 months	
Walk	Trees and seating	Lights
It's in the center of town where I take a break after a long walk and picnics in park.	Playground for children and picnic area.	More grass and less mud.
Community events	It's a central place to gather	
		More places to sit for a family to eat, play games or just talk
Generally surrounding parade events.	Centralized location, opportunity for community to gather.	
Different events	gazebo	
Children played on the playground and attended community events.	The playground	None
Art in the Park		playground equipment in poor condition; plumbed restrooms

Reason for visit	Most enjoyable feature	Suggested improvements
Taking my grandson to playground		
Events in the park	Love that it is right in the center of town	more seating and tables
Public rally and relax and enjoy the sunshine	Unique community feature and convenience	More picnic tables and another small shelter on the SE area
Play with kids	Playground equipment	Not sure I have any...
Art show	Green open space	More benches
Art in the park	I like the gazebo	Some kind of garden would be nice.
Festivals, etc.	All of it	Needs more than just a porta john; township needs to maintain playground equipment better
After or before Parades		
Play ground	Playground	Needs to be kept clean. Trash all over and has kept me from taking grandkids back!
Parades	Gazebo	Pavilion seating
Art show		
Walk dog		
Playground and art in the park	Playground	
Art in the Park	Downtown	
Take my daughter to play at the park	Playground	Restrooms
Memorial Day	Playground	More activities scheduled through school groups to draw different crowds
Art in park, Christmas events	Trees	Cleaner
Art in the Park, Movies in the Park	The band shell/ stage--it's nice to have a place to listen to live music and to have a place for the town to gather	Restrooms, maybe a better movie projector and screen
for kids to play and meet up with friends	that it is within walking distance to so much	
Playground	Equipment	Remove tire shreds. Too dirty for the kids
local events	gazebo - area businesses	can't think of any
Art in the Park, playground etc.	Local events	Farmers markets
All the activities: parades, Santa visit, art fair, etc.	Open spaces with all the shade. Close to my home. Close to restaurants.	None.
hootin in the park, art in the park, walking	easy access to parking	
Festivals	Shade trees on a hot day!	Indoor bathrooms would be nice.
Meeting place near down town	Accessibility	
parades, concerts, movies	play structure and picnic tables	more benches
Art in the park		
Kids playing		
Out for a walk, people	Gazebo.	Change name to PINCKNEY TOWN SQUARE

Reason for visit	Most enjoyable feature	Suggested improvements
watching.		
Art show, movie, concert	Trees picnic tables. Gazebo	Better restroom
Live by it granddaughter likes going there	Soft ground	Drinking fountain
Event		
Grandkids	Playground	Stop allowing protestors
Community	Location	Cut the grass for art in the park
		Add a nice large fountain in the middle.
Village functions	All of it.	
Kids play Area, art in park	Kids play are	Improve play area maintenance
Parades, Halloween fest	Nice area to hang out	More benches
Playground	Close to shops and food	Clean up and more rubber chips to playground.
Kids playing	Seeing kids make good memories	
Playground	Slides	
Playground, downtown shopping	Shady trees and picnic tables	Bathroom! More events, like music and movies in park. Events need better advertising
Take the kids to play	Multi size equipment for big and small kids	A fence to keep kids away from busy roads
Craft show		
farmer's market, craft shows, children's park,		
Playground and town square pizza	Playground and picnic tables	None.
My daughter to play	Playground	Parents to watch their kids, and fix benches
Village activities	Amount of space	Grills
Park with the kids	Jungle gym when older	Basketball court for the older kids
Kids, relax, read, enjoy weather , around people	Downtown	Wi-Fi, more benches, lighting , walking areas
Relaxing	Down town	Wi-Fi, more seating, better lighting
Events	Shade, good place to gather	Bathrooms
Place for children to play	Size of play equipment and location	
Walking around downtown	My daughter loves the slides	Make all of the ground the rubber
Art in the Park		
Community events, such as Art in the Park, parades and Movies In the Park.	Open green space with shady trees and picnic tables to eat lunch at.	new cable to hang the movie screen, public flush toilets
Local	Wonderful downtown space	
Play structure		Replace benches, use wood chips instead of recycled rubber (?) pieces
Parade		
Park and to walk the trails	Positive place to be	Get a skate park
Kids to play		More swings and play structures
Playground	Swings	Fixing the benches, adding more playground structures

Reason for visit	Most enjoyable feature	Suggested improvements
Grandchildren	Play equipment is awesome.	none
	Parade events	
Town events for Memorial Day, Christmas, etc.	Playground	Upkeep of park. Benches broken, etc.
Art in park	Places to sit	
light up the park, playground hootin in the park	Community gathering	Playground
Art fair. Visiting children	Playscape	
My son loves playing at this park.	Swing set, Big slide.	Some things are starting get worn out. It would be nice to have a thorough inspection done to see what could be replaced.
Community Christmas, spooktacular, sports	Love our park	
	Trunk or Treat	More tables for people to eat when visiting downtown eateries
Live in town	Festivals	More festivals
Activities, art in park. Thursday hot dogs, movies, etc.		
Peaceful setting, picnic		
The different events	Clean	
A walk	It was Peaceful	Permanent bathrooms

5. Considering the Lakelands Trail, what were the primary reasons you visited this trail, what did you most enjoy during your visit, and are there improvements you might suggest?

Reason for visit	Most enjoyable feature	Suggested improvements
just for a walk or ski	length	People don't keep their dogs leashed. They feel it doesn't apply on the trail
exercise, transportation	paved, pretty well kept	more trash cans & benches/picnic tables
Walk the trail	the bridges and woods	
Biking w/ handicapped son	Well maintained	More pavement
Running and Biking	Smooth and reliable safe	rebuild the bridges
Daily run/bike	ease of use and location	Cameras for vandalism, repair divets
Walking	All of it	More cameras along trail maybe some lighting.
bike ride		improve access
bicycling	All of it!	
Walking, bicycle riding	Nature, length of trail	Keep maintained, NEED crosswalk signs on Main St
Bike ride and walking	Nature and seeing young families	
Exercise (running); quieter and more scenic pedestrian route from village to grocery than E. Main sidewalk	The trees and the quiet	Invasive vegetation removal and native vegetation restoration/prescribed burns (could possibly be partnered with prescribed burns of utility easement to maintain oak openings and reduce the need for slashing to clear trees from power lines). Another idea: explore a branched trail network connecting to

Reason for visit	Most enjoyable feature	Suggested improvements
		Lakelands Trail, especially branched trails to the public schools (Farley Hill and the high school) and Pinckney State Recreation Area. The lack of a safe paved trail to the high school is regrettable; Dexter Street is not safe for pedestrians with no sidewalk. Perhaps an easement for a trail could be negotiated with agricultural landowner south of E. Main, east of Dexter St. A tunnel under M-36 would be the best way to go.
Use it all the time to get around town	Biking	Expand it to connect to other trails
Biking/running	Being able to grocery shop and go out to eat without driving	Pave farther west and east
walking, running and biking	peaceful	Make it wider in the Pinckney area, there is lots of traffic and it often becomes congested
Dog walk	Easy to access, flat walk	
we just love it	The ability to access beautiful rural and village areas, just by walking out our back door.	
Walk	Solitude	GPS locations sign In case of emergency. Many orv trail systems have them for emergency rescues.
Walking the trail with my dog.	The historical information signs a long trail.	More benches and waste barrels.
Walking dogs	Nature, no cars	Expand the paved portion, move equine trail over
walking/exercise	peacefulness, tree cover	Repair the holes and cracks. I like the section that has the gravel on the edges
Recreation/exercise	Length of trail and ability to enjoy exercise outside.	Generally walk toward Hamburg Township. Not much heading through Putnam
Walking		
Biking	Pleasant views; paved.	Clean/sweep tree debris more frequently in summer months.
Exercise	Scenery, quality of the trail surface	
walking or running	access	More cleanups for horse droppings. I thought the horses didn't like the pavement and that is why there was the gravel edge to the south?
Ride my bike	No cars	Bike fix station , expand trail east to south Lyon
hiking and biking	well maintained	none
Biking and hiking and walking dog, connections to PR Area	Opportunity for exercise and walk/bike through landscape	Horses off main trail, must stay to one side, grass
Biking	Pavement through the trees with rest benches	Water bottle refill station
Exercising my dog, running and bicycling, being in nature	Well-kept trails	More mileage signs
Riding my bike and walking	I love the trails. I would love to see it paved all the way west	Pave the whole thing

Reason for visit	Most enjoyable feature	Suggested improvements
Bike it all the time	all of it	connectors and signs directing people to downtown, also how many miles to Captain Frosty, Zukey, Kroger, etc.
Walking for exercise	Trees	
Bike riding	Trail	
Cycling	No traffic	Horse riders need to clean up after their pets
Looking for deer. crossing places to Hunt		
Running/walking with dog	Natural portions	
Dog walk	Trail is paved	Clean up some litter and dog mess.
Exercise		Lights at night.
	Paved roads	
Walking	Paths	Benches
recreation	biking/ walking	
Exercise and to enjoy nature	I Love the beautiful wetlands along the boardwalk (of Kroger shopping plaza)	Connect the trails to downtown Pinckney, the schools, and neighborhoods (walking/ biking trails from Dexter-Pinckney Road & Sarah Drive to M-36 and to Lakelands Trail or all the way to Dexter) to encourage people to shop downtown and to get exercise, Dexter has a beautiful trail that connects its neighborhoods to downtown Dexter.
bike riding	That it is a black top. I now live in Stockbridge and I love the trails because it is quiet, but very rocky and sandy	
walking/biking	scenery	none
My house is on the trail, bike rides, walks, running	Bike rides	It's pretty good
Riding bike. Walking.	Paved linear path.	Pave the rest of it.
walking	well-maintained	signage that shows the trail in relation to area roads
Running		
dog walking, biking, walking	paved walking/biking trail	water fountain, picnic tables, benches
Walking	Clean	
Walking		
Walk		
Bike riding.	Scenery	
Walk & ride our bikes	Scenery. :)	Please fix/patch the pavement
Bike riding	Smooth	
Run	Length	
Walking/bicycling	Peaceful and very well-kept trail	A few picnic tables to stop and enjoy lunch
Biking	Length	Less kids smoking pot
Walking		Keep teenagers from loitering
Exercise	Paved and no traffic	Mile markers
Running, biking	Smooth, paved area that	Connect it to more subdivisions so that kids/teens

Reason for visit	Most enjoyable feature	Suggested improvements
	goes for a long time	can get there without having to take a car to get there.
Biking and walking	The distance and nature	None.
Walking	Walking and being outside	
Close to home, paved trail	Paved trail	More rest rooms?
Exercise	Smooth pavement	
Walk with kids	Scenery	
Walk the dog	Quiet, paved trail	
Walking		Widen the trail to accommodate bikers, walkers, animals
To run	Long run available	Don't let bad kids smoke, drink, and spray paint the trail
Bikes and walking dogs	The trail is well maintained	Lightning
Walk	Paved	
Run walk and bike		
clean and safe	wooden areas, subs, lakes, rivers, wildlife	
Bike ride	That it is paved and easy to ride.	
Walk, bike,	Paved	More benches, bike racks, lights for night walks and biking
Walk, biking		Skate board area for kids, more kids activity
Walking	Like the paved trail, shaded areas	
Family walk	Seeing so many other people also using the trail	Lighting along trail, more benches for resting
Parents live just off of it	We love to go for bike rides	Maps at more locations to show where you are
Nature walk		
Walking and biking	Goes all the way from Hamburg to Gregory and beyond	more sources of drinking water
Convenience		
Walking	Walk, captain frosty	Port a potty
Walking or biking	The trees and a quiet place	No sidewalk paint
Bike ride	Clean, ride	Paving
exercise	Well kept. very pretty	
Walking with kids		Safety features like lights or emergency phones.
Go for a walk	Easy to use	
Bike , run		
Walking	Clean and accessible	
Walk	Nature setting. Paved	
Bike rides, walks, running	The scenery.	Make paved areas wider. I really do not see the use in the horse lane as horses rarely travel down the paved area.
Walking	Entire trail	

Reason for visit	Most enjoyable feature	Suggested improvements
A jog	Paved	More trash receptacles
Walk		
Walking	Nature	
Exercise	Quiet & clean	
Exercise, enjoying the day.	Seeing others enjoying the trail.	Cleanup of leaves and after horses once and a while.

6. Considering any other park not Village- or Township-owned, what were the primary reasons you visited this park, what did you most enjoy during your visit, and are there improvements you might suggest?

Specify the park	Reason for visit	Most enjoyable feature	Suggested improvements
park by library	convenience to trail and library & there's barely anyone ever there	I can let my dog loose to play because we're often the only ones there	repairs, additional play structure/area for younger kids, fenced in dog park area
Pinckney recreation	the trails to walk, the lakes to fish and swim	the lakes	
Hudson mills	running, biking, mountain biking, hiking	river	
rec areas	hiking	trails	none
Pinckney State Recreation Area	Leisure, exercise	Deep woods, lakes, seclusion	None really. It would be nice if the changing rooms were open in all seasons. It would be awesome if the park was accessible by a trail connecting to Lakelands Trail. It's also too late, but the pipeline construction is an ugly scar on several levels.
Fireman park	Play baseball, catch, fly kite, play kickball	lots of field space	The play structures need some love
Hudson mills	Dog walk, bike ride	Trail by the river	
Village	Walk	Old fashion, traditional green space.	Adopt a park, trash pickup on occasion.
Bishop Lake	Walk trails with dog.	Trails in woods, very peaceful	More benches and waste barrels a long trails
	Walking dogs, camping	Nature	Have dog swimming areas
Hudson Mills	Running, Biking, Scenery	Space, Huron River scenery and access.	
Pinckney State Recreation Area	Hiking	Nature	
Huron Mills Metro	Running and biking to Dexter	Good 3K loop and beautiful connector to Dexter park	Retain a pristine experience along the West Bank trail
Hudson Mills	Bicycling and running	Long well-kept trails around the park and to Dexter	None
Hudson Mills	Run there weekly, also bike B2B to Dexter	all of it	Trail connecting it to Pinckney and Lakelands trail
Pinckney and Brighton Rec areas	MTB trails	Trails	More trails

Specify the park	Reason for visit	Most enjoyable feature	Suggested improvements
Pinckney state park	Walk dog with children	N/a	Was unable to walk dog with children in stroller. So I had to turn around and go home. Maybe have a paved trail.
Manly W. Bennett Park	Soccer games for Legacy's Powerade Tournament,	Soccer fields	Bathrooms
Merrill Park	Disc golf	Disc golf	More disc golf
Brighton Rec Area	swimming	lake	parking, bathrooms, benches
Kids playing			
Silver lake	Swimming		Needs a gazebo.
Hudson mills	Run		
Hudson mills	Family activity	Play structures activities,	
Hudson mills	Activities like camping, canoeing, hiking	Size	
Genoa Township park	Playground	The different types of playground equipment	None
Pinckney state park	Swimming	Spending time with family swimming and volleyball	
Independence lake	Splash pad	Splash pad	
Plymouth township park	Splash pad	Fun in hot summer sun!	
Imagination Station	Kiddo wanted to play	Huge space and closed in	
Pinckney Recreational Parks	Camping, walking trails		
Pinckney state park	Bikes	Great trails	Mile markers
Country Elementary	Ballfield use	Space to play	
Pinckney Recreation area	Swimming at the beach and hiking or biking on the trails	the beach	more sources of drinking water on the trails
Fireman's Park	Kitty corner to my home	Baseball field	Enforce park closing "sunset"
Playground	Children want to play	Kids have fun	
Park at country elementary	Playground	Many playground choices	More swings for younger children
library	Grandchildren	slide	Clean it up a bit more. add benches to sit
Pinckney rec area	Bird watching, mountain bike	Wildlife	
Brighton	Pow wow, legion picnic		
Manly Bennett Park	Disc Golf	Multi Use	Concessions?
Bishop	Some event or let the kids play, swim	Swim	

7. Considering any other park not Village- or Township-owned, what were the primary reasons you visited this park, what did you most enjoy during your visit, and are there improvements you might suggest?

Specify the park	Reason for visit	Most enjoyable feature	Suggested improvements
Hudson mills	larger size, more variety of activities & areas, exercise, picnics	lots of space & water	
Hudson Mills Metropark	Leisure	Multiple use options, scenery	Like Pinckney Recreation Area, connectivity to Pinckney by trail would be great, which would link Pinckney to Dexter (I believe this may already be in the planning stages).
Hudson Mills	Pure enjoyment, exercise, and taking in the riverside.		
Silver Lake State Park	Swimming	Beach and trail system	
Pinckney Rec Area - Silver lake	Swimming	marked distances for swimming	sand beach instead of grass
			Would be nice to see one of those water splash parks.
Pinckney El	To take kiddos to play	Fenced off	With Pinckney still owned it
Hudson Mills Park	walking, fall apple cider activities, children's play area		
Hudson Mills	Walking dogs		
Brighton Recreation area	a picnic at a beach pavilion	the beach	I don't know
Pinckney Recreation Area	Camping	Rustic camp site	
Walk			
Game areas	Peace	Peace	

8. Please indicate to what extent each of the following recreation facilities/activities are important to you. Mark each of the following on a scale of 1 to 5 where 1 is not important at all and 5 is extremely important.

	1 - Not important at all	2 - Slightly important	3 - Somewhat important	4 - Very important	5 - Extremely important
Walking/Running/Bicycling Paths or Trails	3	4	18	30	86
Nature Trails	4	10	28	36	62
Playground Structures	16	23	25	36	39
Picnic Areas and Pavilions	11	19	50	38	20
Ball Fields (Soccer, Baseball, Softball, etc.)	20	25	45	33	16
Sport Courts (Tennis, Pickle ball, Basketball, Volleyball, etc.)	26	27	34	41	12
Skate boarding and/or BMX Bike Facilities	63	28	22	15	10
Cross Country Skiing Trails	36	38	35	19	11
Fishing Pond	46	29	36	16	12
Canoeing/kayaking	18	16	33	42	30

Your Suggestion:					
• Children enjoy the play areas at the parks so much, but really only for smaller kids. Something more like basketball or volleyball areas for older kids					
• If we have fishing/kayaking, it isn't well publicized					
• Need to bring in young families and kids and promote growth in the township					
• I think trails are the strength of the area. The Huron River would be also if there was a navigable river connection to it from the Pinckney area. Alas. Our children are young, so we haven't frequented parks for sport purposes, but many of us do not have the space on our personal property for sport use, so I support the maintenance of public parks for such use. I'm also not sure who owns the wooded property along Honey Creek on the south edge of town east of D-19, but it seems like an excellent candidate for a new trail park, maybe not as intrusive of a project as Dexter's river trail, but a good way to help residents connect to the natural landscape and inspire interest in the wellbeing of the watershed. It also seems like the public strips of land in the village where streets were never paved could be put to better use (e.g., native vegetation green belts, community agricultural/permaculture spaces) instead of grass that has to be mowed.					
• What happened to the B.B. court in the park? If you build it they will play!					
• Dog swimming areas					
• Something has to be done about horse poop on the Lakeland's trail					
• Provide access to and parking along creeks. Keep the creeks unobstructed					
• Teen/ youth center with dedicated programs: music (look at Ann Arbor's Neutral Zone as a good example), art, place to do homework with tutors, and after school activities--takes kids to our parks, etc. We need a safe place for kids/ teens to go that are staffed by licensed adults and that is funded through whatever means (community, corporate, grants, etc.).					
• Splash pad would be nice for the kids					
• Less cost the better					
• Pinckney needs a place for teens, so they can skate board and box, plus have public Wi-Fi for kids and families that can't afford it at home, so they can enjoy a park with Wi-Fi					
• More parking near rapids at Hudson mills					
• Dog Park would be great. We need more kid friendly activities for after school and summer					
• Disc Golf/BMX					

9. Which type of facilities or park would you be most likely to visit? Please mark the choices on a scale of 1 to 3 where 1 is your least likely to visit and 3 your most likely to visit.

	1 - Least likely to visit	2 - Likely to visit	3 - Most likely to visit
Parks with athletic fields and courts	65	49	21
Nature preserves with nature areas and nature/hiking trails	5	45	87
Neighborhood parks with playgrounds and benches	32	49	56
Bicycle trails and walking/running paths	5	27	106
Indoor fitness center with gymnasium and fitness classrooms	38	46	53
Your suggestion			
• Trails that connect to other trails/parks/schools/communities (i.e., trails that permit safe non-automotive travel)			
• Cross country skiing trail			
• Dog swimming areas			
• Equestrian trails, hitching posts			
• Need trails to ride to Hudson mills safely ...			

• Would love to have a wellness center in Pinckney, like in Dexter and Chelsea
• Outdoor pool/ water park
• Love the fitness center idea!!
• Indoor track for running
• Water park
• Splash pad
• Splash pads
• Basketball court in town square for the older kids
• We desperately... desperately need outdoor basketball courts!!!!!!! The number one MOST important thing missing from Pinckney!!!!
• swimming beach
• Skate park
• Bring back the bowling alley!!
• Splash pad
• Dog park
• Facility that offers activities for teens and adults.

10. How would you rank the following possible improvements to the overall community parks and recreation system? Please mark each of the suggested improvements on a scale of 1 to 5 where 1 is least priority and 5 is top priority

	1 - Least priority	2 - Low priority	3 - Medium priority	4 - High priority	5 - Top priority
Maintain/renovate existing parks	2	6	20	54	52
Develop new facilities at existing parks	9	14	39	43	26
Develop more paths within parks and to connect community facilities	11	7	36	37	43
Develop/improve a water trail	16	21	46	31	18
Add way finding signage and trail amenities to the Lakelands Trail	10	30	41	30	21
Acquire new parkland and open space	16	37	39	16	24
Your suggestion					
• dog park accessible by Lakeland Trail/connected to an existing park - the dog park at Arise Church is great, but you have to drive there and it's not super kid friendly					
• Allow the old lumber yard to become a rec center					
• Need an outdoor sports complex for young kids and families. What is available today is embarrassing					
• Habitat restoration in appropriate park settings					
• Dog swimming area					
• Enable trails to connect o parks and facilities as well as services, i.e., dining, shopping, entertainment, etc., by providing bicycle racks, hitching posts, benches.					
• Address horse poop					
• Build larger gazebo Move location to accommodate larger crowds. Get local businesses to sponsor higher quality bands. Have local organizations operate beer and wine sales to make money. This works very well in Muskegon					
• Develop more paths from neighborhoods to downtown Pinckney and Lakelands trails to encourage exercise and shopping in downtown Pinckney. Teens that don't drive have no way to get to downtown Pinckney or the trails or other park facilities.					
• field hockey, gaga ball, community swimming pool					

• Exercise equipment
• Township square playground in need
• Splash pad
• Allow a private company to do this for more local business
• Add Basketball courts for our kids!!!! We have a problem with kids and nothing to do.... give those courts!!!!!!!
• Basketball court in town square
• Wi-Fi skate bmx park
• Publicity of existing little-known parks, such as "Loy" and "Firemen"
• Splash pad
• Skate park with other amenities for kids
• Add more playground equipment at the fireman's park. Great asset for the village edge subdivision as the neighborhood has no designated play area.

11. While not being considered at this time, would you support a future millage for the operation, maintenance, and development of community parks and trails?

Yes	74.26%	101
No	13.24%	18
No Opinion	12.50%	17

12. Is there anything else you would like us to consider?

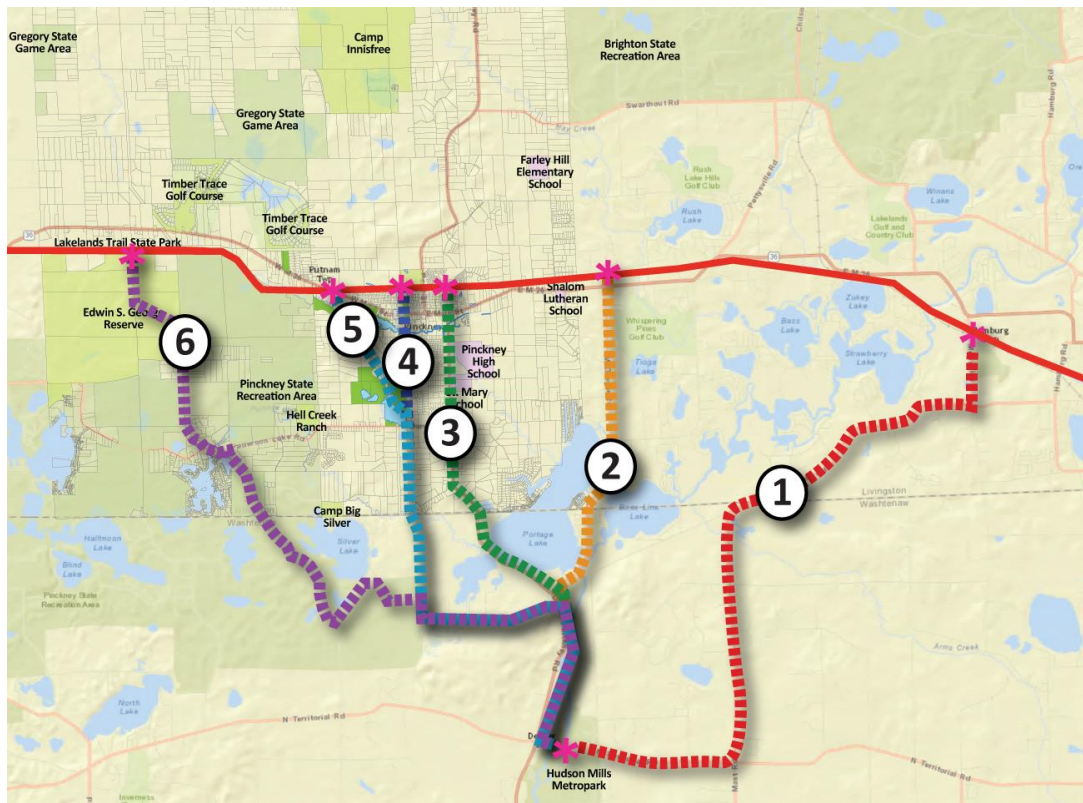
• Improvement to access and use of the village pond area. Water is already there, but no improved areas for people to enjoy
• I would love to see one of our parks become an all-inclusive park (I think this would be easiest to accomplish with the park by the library - completely fenced in so that entire families, including their friendly dogs, could play in the same place with play structures that fit the interests/needs of a variety of age ranges. There is plenty of space at the library park, and it is already mostly fenced in :-)
• Being in the honey creek Meadows sub it would be nice to have a better path to bike to Lakelands trail for little kids. Loy bond is nice, but the south end of the village can be a little disconnected
• Some areas for smaller lots and cheaper homes to allow younger people to build and live in the township
• I imagine the people who have lived here and people who have moved here connect with and are drawn to the area by its inherent natural beauty and agrarian roots. There is nothing wrong with being bold (at the very least in vision if not always feasible in practice) in protecting and promoting both of those things.
• Adding bicycle lanes on the roads. More bike friendly.
• No more millage please. Even if the voters turn it down the township still does it any way. Just like the fire department millage was not passed but the township move money to make it happen.
• Connecting Loy Bond to a trail connector.
• We need a bike trail connector from the B2B and the Lakeland Trail
• With all the lakes in this area, it would be awesome to have a community beach for residents only. free to residents
• A wellness center!
• Create events to bring more people in allowing businesses to increase revenue who.in turn will have funds to sponsor more events of high quality
• Please connect the people of Pinckney to the parks and to downtown Pinckney. We need paths from Dexter-Pinckney Road and Sarah Drive to link to the high school, downtown Pinckney, the Middle and Elementary Schools, and to the Lakelands Trails. It would increase business for downtown Pinckney merchants, give kids something to do after school and in the summer, and better connect our community and encourage healthy active living. Increase police bike patrols on the Lakeland Trails and car patrols to protect our kids from predators/ human traffickers that have been targeting our community (and other

communities).

- Our trails and water are unique - Let's continue to enhance this opportunities
 - Facebook pages for the parks and trails that don't have one already
 - Maintain the playground in the square!
 - Really? Asking for more money from another Millage. No I won't support additional taxes. Spend money from the existing taxes to fix and maintain existing parks,
 - We need more things for kids to do maybe set up a volleyball court in town at park in summer
 - Add shade to playground in town square. Play structure gets too hot!
 - No raising taxes
 - Basketball courts!!!
 - Sponsor events to raise money for improvements. For example marathons or bike rides
 - Walking path thru Pinckney
 - Indoor facilities/activities
 - Acquire or lease the old depot for trail head and for youth groups. Turn the old annex into a welcome center with restrooms instead of port-a-johns.
-

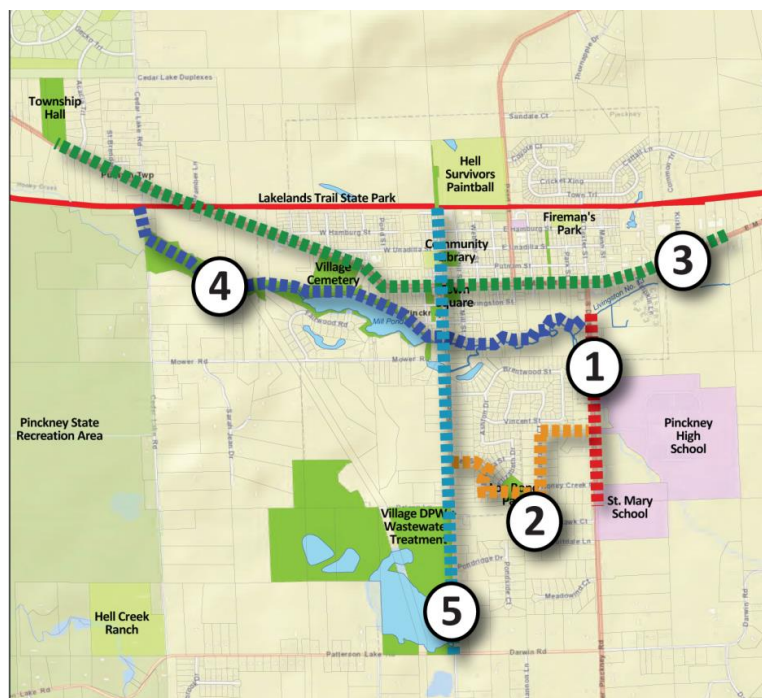
13. As part of the regional efforts to develop a trail connector from Hudson Mills Metropark to connect to the Lakelands Trail, several route alignments are being considered. Please indicate your top three preferred alignment for developing a walking/running/bicycling path connection.

	3rd choice	2nd choice	Top choice
1. Huron River Drive + Strawberry Lake Road + Merrill Road	36	13	15
2. Dexter-Pinckney Road + McGregor Road	22	39	32
3. Dexter-Pinckney Road	28	32	44
4. Stinchfield Woods Road + Toma Road + Howell Street	34	25	31
5. Stinchfield Woods + Toma Road + ITC Corridor	32	16	10
6. Stinchfield Woods + Toma Road + Stinchfield Woods + Dexter Townhall Road + Silver Hill Road + Patterson Lake Road + Kelly Road	28	6	16
7. Your suggestion			
<ul style="list-style-type: none"> I don't know what ITC corridor is The UFC emits frequencies that are not good for you. Option 3 would provide a walkway on Dexter-Pinkney Road which is needs to be a top priority for the village, Putnam and Livingston County. There is a need for sidewalks in this community. Dexter Pinckney road is a horrible choice, too narrow and dangerous for bikes. Cedar Lake Road + Can't wait for this!!! I would vote "yes" for a millage if #3 was the route. Something has to be done with the bike riders on Dexter Pinckney road. In the evenings it is a hazard to have bike riders on that busy road. For safety I choose 3 Safe trail on d19 			



14. As part of the local efforts to develop bicycle and pedestrian connections to our community facilities and the Lakelands Trail, several connections have been identified for improvements. How would you rank the following possible connections for developing pedestrian/bicycle non-motorized accommodations on a scale of 1 to 5, where 1 is the least priority and 5 is the top priority?

	1 - Least priority	2 - Low priority	3 - Medium priority	4 - High priority	5 - Top priority
1. Dexter-Pinckney Road connection to Pinckney High School and St. Mary School	8	10	14	20	59
2. Howell Street to Dexter -Pinckney Road through subdivisions	30	25	28	13	7
3. Bicycle accommodations along M-36 from Village east boundary to Putnam Township Hall through bike lane, shared road, and paved shoulder markings	19	14	33	28	18
4. Mill Pond and Honey Creek pathway from Dexter-Pinckney Road to Cedar Lake Road	18	17	31	25	19
5. Bicycle accommodations along Howell Street from Patterson Lake Road to Lakelands Trail through pavement markings and new path on lot adjacent to Library.	16	14	36	27	18
6. Your suggestion					
<ul style="list-style-type: none"> • pathway pearl street straight down to Brentwood • Farley Road connection to Farley Hill Elementary • Kids are in danger walking to the high school, just saying. • Dexter Pinckney from 36 to north territorial • (Extension of #1) Dexter-Pinckney Road connection to Sarah Drive--there is a huge subdivision off of Sarah Drive and it would be nice to connect more neighborhoods to the trails. I see many high school students walking on unsafe road shoulders to and from school. • M36 is not safe for cars and bikes together • Safe bike path on d19 					



15. How old are you?

Under 25	3
25 to 34	20
35 to 44	18
45 to 54	47
55 to 64	33
65 and over	98

16. Including yourself, how many adults 18 and over live in your household?

1	15
2	66
3	30
4	16
5	3
6	0
7	0
8	0
9 or more	0

17. How many children under 18 live in your household?

0	61
1	29
2	26
3	9
4	2
5 or more	2

18. Do you own or rent your home?

Own	96.18%
Rent	3.82%

19. In what zip code area do you live?

48169	115
48139	2
48116	2
48854	1
48843	3
48285	1

PARKS AND RECREATION MASTER PLAN COMMITTEE SWOT EXERCISE

At their meeting of October 4, 2017, the Master Plan Committee provided the following input in regards to the community strengths, weaknesses, opportunities, and threats.

Strengths	Weaknesses	Opportunities	Threats
Lakelands Trail	Lack of parks	Water Trail (Portage Lake and Honey Creek)	Headlee Rollback reducing municipal revenue
Putnam and Pinckney alliance	Municipality size	Iron Belle Trail route through Pinckney-Putnam	Reduction in other sources of funding
Town Square improvement through a Patronicity + MEDC Grant	Funding	Access to Mill Pond now possible	Grant criteria that cannot be met
Proximity to Pinckney Recreation Area	Lack of ballfields	Dam removal study	General apathy
Great branding as "Gateway to Play"		Land for possible acquisition and/or park development (ACO property, People's Church, Township Hall)	
Trail Town Branding			

NOTICE OF DRAFT PLAN AVAILABILITY FOR PUBLIC REVIEW AND PUBLIC HEARINGS



LIVINGSTON DAILY PRESS & ARGUS NEWSPAPERS
323 East Grand River Avenue, Howell MI 48843

BE IT MADE KNOWN THAT THE FOLLOWING LEGAL AD APPEARED IN
DAILY PRESS & ARGUS

VILLAGE OF PINCKNEY
220 S. HOWELL ST.
PINCKNEY, MI 48169

REFERENCE: 3003857
336389

MASTER PLAN PH

STATE OF MICHIGAN

COUNTY OF LIVINGSTON

LIVINGSTON DAILY PRESS & ARGUS a newspaper published in the English language for the dissemination of local or transmitted news, which is a duly qualified newspaper, and that annexed hereto is a copy of a certain order taken from said newspaper, in which the order was published on the date indicated below.

SIGNED BY:

Scott FENELEY

NOTARIZED BY:

Gina Anne Huff

PRINT NAME: Gina Anne Huff
(Acting in) LIVINGSTON Notary Public in and for said County

Commission expires: 03/09/2023

Subscribed and sworn to before me on:

12/27/2017

PUBLISHED ON: 12/26

TOTAL COST: \$ 100.00

AD SPACE: 2 X 5

FILED ON: 12/26/2017

PUBLIC NOTICE

Public Hearing and
Availability of Proposed
Parks and Recreation Joint Master Plan
for Public Review

Village of Pinckney and Putnam Township

The Village of Pinckney and Putnam Township have updated their Parks and Recreation Five-Year Master Plan and will accept written comments on the plan until February 8th, 2018.

The Plan is a requirement to remain eligible for state and federal grants administered by the Michigan Department of Natural Resources and will help guide the future development of parks and recreation in the Pinckney-Putnam area. The draft Parks and Recreation Master Plan is available for public review at the Township Hall (3280 W. M-36), Village Hall (220 S. Howell St.), at the Community Library (125 Putnam St.), and on both the Township's and Village's websites (villageofpinckney.org or putnamtwp.us). Any interested public can send comments to the Parks and Recreation Master Plan Committee or will be given an opportunity to comment at the following public hearings:

- Putnam Township Board of Trustees: **Wednesday February 21, 2018 at 7:00 pm** at the Putnam Township Hall, 3280 W. M-36, Pinckney, MI 48169.
- Pinckney Village Council: **Monday, February 26, 2018 at 7:00 pm** at the Pinckney Village Hall, 220 S. Howell St., Pinckney, MI 48169; and/or

Please direct your comments to the Parks and Recreation Master Plan Committee, c/o Clerk's Department, at either of the addresses listed above.

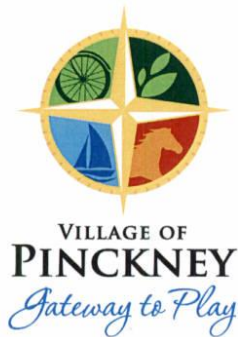
Amy Salowitz, CMMC
Village Clerk

Sally D. Guyon, CMMC/CMC
Putnam Township Clerk

(12-26-2017: DAILY 336389)

GINA ANNE HUFF
NOTARY PUBLIC - STATE OF MICHIGAN
COUNTY OF LIVINGSTON
My Commission Expires March 9, 2023

PARKS AND RECREATION MASTER PLAN COMMITTEE RESOLUTION



Resolution In Support of the Adoption of the Pinckney-Putnam Parks and Recreation Master Plan



WHEREAS, Putnam Township and the Village of Pinckney have undertaken the update of their five-year parks and recreation plan which describes the community's physical and social characteristics, existing parks and recreation facilities, and the desired actions to be taken to improve parks and recreation facilities during the period between 2018 and 2022; and

WHEREAS, the Parks and Recreation Master Plan Committee reviewed the *Pinckney-Putnam Parks and Recreation Master Plan* during the course of several meetings held on October 4, November 14, December 20, 2017 and February 13, 2018; and

WHEREAS, the *Pinckney-Putnam Parks and Recreation Master Plan's* goals and objectives were developed in response to needs and deficiencies identified by a survey of residents conducted in October and November 2017 and input from Township and Village officials, community stakeholders, and staff; and

WHEREAS, the *Pinckney-Putnam Parks and Recreation Master Plan* has been made available for public review in the manner required by law and all comments from the public have been considered by the Parks and Recreation Master Plan Committee; and

WHEREAS, the plan was developed for the benefit of the entire community;

NOW, THEREFORE, BE IT RESOLVED that the Parks and Recreation Master Plan Committee recommends the adoption of the *Pinckney-Putnam Parks and Recreation Master Plan* by the Putnam Township Board of Trustees and the Pinckney Village Council.

Motion by: *Linda Lavey*

Supported by: *Rebecca Foster*

Votes in favor: *Michelle Bunner, Pat Carney, Rebecca Foster, Sally Guyon, Linda Lavey*

Votes opposed: *None*

Abstained: *None*

Absent: *Bob Pruss, Bob Valder*

I hereby certify that the above is a true and complete copy of a resolution duly adopted by the Parks and Recreation Master Plan Committee at a meeting held on the 13th day of February, 2018.

A Salowitz
Amy Salowitz, Clerk
VILLAGE OF PINCKNEY, MICHIGAN

Sally Guyon
Sally Guyon, Clerk
PUTNAM TOWNSHIP, MICHIGAN

MINUTES OF PUBLIC HEARING – PUTNAM TOWNSHIP

**PUTNAM TOWNSHIP
REGULAR MEETING MINUTES
PUTNAM TOWNSHIP HALL, 3280 W. M-36, PINCKNEY, MI
FEBRUARY 21, 2018**

CALL TO ORDER

Meeting opened at 7:00 PM with Pledge of Allegiance led by Supervisor Brennan.

ROLL CALL

Present: Brennan, Carney, Chambers, Klein, Guyon and Press
Absent: Bennett
Others Present: Fire Chief, Greg Amburgey; Carrie Humble, Recording Secretary

CALL TO THE PUBLIC

Opened at 7:01 PM.

One resident spoke in support of renewing Road Runner Tire's Home-Based Business permit.

Closed at 7:02 PM.

APPROVAL OF AGENDA

A motion was made by Klein and supported by Carney to approve the agenda as amended. MOTION CARRIED.

APPROVAL OF CONSENT AGENDA

A motion was made by Carney and supported by Brennan to approve the consent agenda excluding the General Fund Budget 7(e) for discussion and/or approval under New Business 14(i) General Fund Budget Amendment for 2017/2018, line item 760. MOTION CARRIED.

DEPARTMENT UPDATES

1. Supervisor: Iron Bell Trail not coming through Township, potential for Border to Border Trail to come through; requesting Township Board to research and consider social media use for announcements through Facebook and/or Nextdoor.
2. Clerk: two elections scheduled for 2018 utilizing new equipment, Clerk & Deputy have attended training for the new software for the Qualified Voter File, will also be attending training 2/27 for the new election equipment.
3. Treasurer: First year with new tax due date of 2/14 went well with a collection rate of 93%, attended Border to Border Trail meeting with Supervisor.
4. Fire Department: No report.

CORRESPONDENCE

Village of Pinckney Council Meeting minutes 2/12/18; Livingston County Update; Livingston County Road Commission-proposed budget; Thank you card & letter from retired Trustee Dick McCloskey.

PRESENTATION

Jean Ligon presented information regarding the Michigan DNR (MDNR) and Michigan Horse Council's (MHC) desire to purchase the 995-acre Camp Innisfree located on W. Schafer with the MDNR owning the land and MHC owning the buildings, the vision is for a premier camp ground/trail facility primarily for equestrians but also with potential for weddings, 4-H, programs

Board Minutes 2/21/18 pg. 2

for schools, special needs, Boy & Girl Scouting, etc. Trails would be open to hiking, biking & equestrians with the potential to connect to other area recreation. Planning to professionally fundraise for feasibility study cost of \$70,000 & startup costs of approximately 1-1.5 million. Planning a one-day visionary workshop on sight in March with a cost of \$8,000 of which the MHC has pledged \$3,000, invites Township Board to attend and pledge monies to help with the cost of the workshop.

Board discussed legalities of pledging, will investigate before moving forward.

PUBLIC HEARING: PINCKNEY-PUTNAM JOINT PARKS & RECREATION MASTER PLAN

Supervisor Brennan opened the public hearing at 7:38 PM.

Lucie Fortin of Mannik Smith Group explained the requirement for reviewing the Master Plan at five-year intervals to remain eligible for grant monies, reviewed the Pinckney-Putnam Joint Parks & Recreation Plan, recommends adding language regarding the potential acquiring of Camp Innisfree in order to be prepared for grant opportunities, Patronicity grant is underway. Trustee Chambers expressed his concerns in voting on a Master Plan that he was not provided with until tonight's meeting.

No public response.

Supervisor Brennan closed the public hearing at 7:51 PM.

A motion was made by Carney and supported by Guyon to adopt Resolution #18-05 which adopts the Pinckney-Putnam Parks and Recreation Master Plan as modified. Roll Call Vote: Yeas: Carney, Press, Brennan, Klein, Guyon and Chambers. Nays: None. RESOLUTION ADOPTED.

UNFINISHED BUSINESS

1. Resolution #18-03: **A motion was made by Guyon and supported by Klein to approve Resolution #18-03 which modifies the Sarah Dr. Road Improvements Special Assessment District No. 1 removing incorrect parcel #4714-36-300-021 and replacing it with the correct parcel #4714-36-303-006 both parcels being under the same ownership. Roll Call Vote: Yeas: Carney, Press, Brennan, Klein, Guyon and Chambers. Nays: None. RESOLUTION ADOPTED.**

2. Resolution #18-04: **A motion was made by Carney and supported by Guyon to adopt Resolution #18-04 which approves recommendations to the Planning Commission regarding re-opening the Master Plan for a limited review. Roll Call Vote: Yeas: Carney, Press, Brennan, Klein, Guyon and Chambers. Nays: None. RESOLUTION ADOPTED.**

NEW BUSINESS

1. Home Based Business Permit Renewal for Small Engine Repair, Owners Darryl Bint & Howell Hargis: **A motion was made by Klein and supported by Press to approve a two-year renewal of the Home-Based Business permit for Small Engine Repair, 6181 Pinckney Rd., (#4714-01-100-008), owned by Darryl Bint & Howell Hargis, expiring 2/17/20. MOTION CARRIED.**

2. Home Based Business Permit Renewal for Road Runner Tire, Owner Glen Hood: **A motion was made by Klein and supported by Press to approve a two-year renewal of the Home-Based Business permit for Road Runner Tire, 7906 Heather Marie Ct., (#4714-08-300-016), owned by Glen Hood, expiring 2/17/20. MOTION CARRIED.**

3. Board of Review Asset Test: **A motion was made by Brennan and supported by Carney to approve the Asset Test for poverty exemptions for use by the Board of Review as proposed. MOTION CARRIED.**

Board Minutes 2/21/18 pg. 3

4. Board of Review Poverty Guidelines: **A motion was made by Brennan and supported by Press to approve the Poverty Guidelines for use by the Board of Review as proposed. MOTION CARRIED.**

5. Township Road Dust Control: **A motion was made by Carney and supported by Guyon to approve the proposal as submitted by Chloride Solutions at \$.1825/gallon for road dust control. Roll Call Vote: Yeas: Carney, Press, Brennan, Klein, Guyon and Chambers. Nays: None. MOTION CARRIED.**

6. Township Properties Lawn Fertilization: **A motion was made by Chambers to approve spending up to \$2,000.00 for lawn fertilization of all Township properties. MOTION FAILED FOR LACK OF SUPPORT.**

A motion was made by Carney and supported by Guyon to approve proposals as submitted by Metro West Services for lawn fertilization services for the Township Hall, Fire Station, Square & Senior Center, not to exceed \$3,970.00. Roll Call Vote: Yeas: Carney, Press, Brennan, Klein, Guyon and Chambers. Nays: None. MOTION CARRIED.

7. Employee Policy Manual Amendment: **A motion was made by Brennan and supported by Guyon to approve amendments as presented to the Employee Policy Manual (7) Employee Benefits, 7.1 Holidays. MOTION CARRIED.**

8. Principles of Governance: Trustees reviewed and signed the Principles of Governance Pledge.

9. 2017/2018 General Fund Budget Amendment: **A motion was made by Carney and supported by Guyon to amend the 2017/2018 General Fund Budget, specifically to increase line item 760 Township Hall expenses by \$20,000 to a new total of \$134,300. Roll Call Vote: Yeas: Carney, Press, Brennan, Klein, Guyon and Chambers. Nays: None. MOTION CARRIED.**

A motion was made by Klein and supported by Guyon to approve the General Fund Budget as submitted from Consent Agenda item 7(e). MOTION CARRIED.

10. Fire Department Dodge Durango: **A motion was made by Brennan and supported by Carney to approve the sale, at auction of the Fire Department's Dodge Durango utility vehicle. Roll Call Vote: Yeas: Carney, Press, Brennan, Klein, Guyon and Chambers. Nays: None. MOTION CARRIED.**

11. Township Square Sign Request: **A motion was made by Klein and supported by Press to not permit the installation of a St. Patrick's Day sign honoring Irish heritage in the Township Square. MOTION CARRIED.**

SECOND CALL TO THE PUBLIC

One resident requested clarification of the General Fund amendment as approved.

ADJOURNMENT

There being no further business, a motion was made by Klein and supported by Press to adjourn the meeting at 8:38 PM.



Carrie J. Humble, CMMC, CMC
Deputy Clerk
Recording Secretary

Reviewed by:



Sally D. Guyon, CMMC, CMC
Putnam Township Clerk

MINUTES OF PUBLIC HEARING – VILLAGE OF PINCKNEY

Village of Pinckney Regular Council Meeting February 26, 2018

The President called the meeting to order in the Village Council Chambers at 220 S. Howell, Pinckney at 7:01 pm on February 26, 2018.

ROLL CALL:

Present: Dombrowski, Foster, Kauserud, Pais, Tibus, Vedder and Lavey
Absent: Tibus
Also Present: L. Fortin (Planner), A. Salowitz (Clerk)

PLEDGE OF ALLEGIANCE

PUBLIC FORUM:

Lavey opened at 7:02pm
No one wished to speak. Closed at 7:02pm

CONSENT AGENDA:

Vedder requested that the Fee Schedule be removed from consent. Lavey indicated that Fee Schedule would be # 7 on agenda.

Motion by Foster to accept amended Consent Agenda: Seconded by Kauserud

Yeas: Dombrowski, Foster, Kauserud, Pais, Vedder and Lavey

Nays: None

Absent: Tibus

Motion carried in a roll call vote.

PRESIDENT'S REPORT:

- Hired a new accountant today. Her name is Kimberly Bilko. She will begin next Monday, March 5th and work Monday, Wednesday and Thursday 8a-4p.
- Chief Newton has been named the Grand Marshall of the Pinckney St. Patrick's Day parade.
- The State of the County presentation is next Monday at 6pm.
- The village has officially submitted all of its requirements for Redevelopment Ready Certification (RRC). We will be welcomed into the program in the near future during a regularly scheduled Council meeting.
- Office space has been rearranged a bit.
- Michelle Brunner's birthday is this Wednesday. Wish her a happy birthday if you see her.
- Lavey apologized for all of the long documents in the packet this week.
- Lucie Fortin asked to add that the DNR is interested in purchasing Camp Inisree and having local partners manage it.

UNFINISHED BUSINESS:

1. **Historic District Study Committee**
 - a. No Update
2. **Dam Feasibility study**
 - a. No Update

AGENDA:**1. Public Hearing – Joint Parks & Recreation Master Plan**

Lavey opened the Public Hearing at 7:08pm

No public present to speak, however, Lucie Fortin, Planner was available to answer questions from Council.

Fortin discussed the DNRs acquisition goal of Camp Inisree. She discussed with Putnam Township about indicating support of the acquisition in the master plan. Council in agreement if township was good with the recommendation.

Public Hearing closed at 7:12pm

Motion by Foster to accept the resolution of adoption of the Pinckney-Putnam Parks & Recreation Master Plan; Seconded by Vedder.

Yeas: Dombrowski, Foster, Kauserud, Pais, Vedder and Lavey

Nays: None

Absent: Tibus

Motion carried in a roll call vote.

2. Resolution: Clarifying Village Sanitary Sewer System Right of Way

Lavey indicated that all easements and deeds have been registered with the county confirming the villages' ownership and legal access. The Village Council needs to accept these clarifying easements and confirm the status. There is a list of the newly acquired easements and deeds attached to the resolution.

Motion by Pais to accept the resolution clarifying the Village Sanitary Sewer System Right of Way; Seconded by Kauserud.

Yeas: Dombrowski, Foster, Kauserud, Pais, Vedder and Lavey

Nays: None

Absent: Tibus

Motion carried in a roll call vote.

3. Engineering Agreement

Rural Development made some changes to the template that Council previously accepted. The engineers and attorneys have reviewed and revised the document.

Motion by Dombrowski to accept the engineering agreement and authorize Lavey to sign representing the village; Seconded by Foster

Yeas: Dombrowski, Foster, Kauserud, Pais, Vedder and Lavey

Nays: None

Absent: Tibus

Motion carried in a roll call vote.

4. Resolution: Authorizing Execution of Initial Rural Development Administration Financing documents for the 2018 sanitary sewer system improvements.

Adoption of the resolution allows for Lavey, as Village President, to certify, along with the attorney, the sanitary sewer system ROW ownership; the required ROW map; the amended engineering agreement and other required documentation.

Motion by Kauserud to accept the resolution authorizing execution of initial Rural Development Administration financing documents for the 2018 Sanitary sewer system improvements; Seconded by Pais

Yeas: Dombrowski, Foster, Kauserud, Pais, Vedder and Lavey

Nays: None

Absent: Tibus

Motion carried in a roll call vote.

5. Resolution: Authorization to pay pre-approved/budgeted payables

Salowitz indicated that this was an existing document that she has updated. When she ran payable reports, in the accountants' absence, she noted that remittances out of payroll did not show up on any reports that go to Council – only on the monthly check register. She just wanted to confirm that Council is aware that we pay these “vendors” regularly (ie. state and federal tax, OPEB). Just good record keeping.

Motion by Foster to accept the resolution authorizing specific vendors to be paid each month as approved within the fiscal year budget; Seconded by Vedder.

Yeas: Dombrowski, Foster, Kauserud, Pais, Vedder and Lavey

Nays: None

Absent: Tibus

Motion carried in a roll call vote.

6. Purchasing Policy

Vedder questioned whether this meant that all engineering projects would be bid if over \$25,000. Salowitz indicated that that was not the intent. Discussion on partner subcontractors. Salowitz suggested that she take it back and look at the document with the concern in mind.

Motion by Vedder to table the Purchasing Policy until such a time that concerns could be addressed; Seconded by Kauserud

Yeas: Dombrowski, Foster, Kauserud, Pais, Vedder and Lavey

Nays: None

Absent: Tibus

Motion carried.

7. 2018 Fee Schedule Revised

Vedder questioned why we are revising if we did a fiscal year schedule in June 2017. Salowitz indicated that Brunner was attempting to make the schedule match all the fees published in the Technical Standards and the ordinances. Question on driveway permit; Where did the resurface fee go? Why is the residential fee so high? Does the requirement match those in the coal tar ordinance?

Discussed reason for fee for pre-planning meeting.

Salowitz indicated that we also need to address the NSF fee as the bank has raised their fee.

Motion by Kauserud to table the fee schedule approval until some clarification can be received; Seconded by Foster.

Yeas: Dombrowski, Foster, Kauserud, Pais, Vedder and Lavey

Nays: None

Absent: Tibus

Motion carried.

TRUSTEE FORUM

- Vedder asked Salowitz to follow up with MDOT again on the status of the speed study.

PUBLIC FORUM

Opened 7:51pm. No Public present.

Forum closed at 7:51pm

Meeting Adjourned at 7:51pm

Approval Date _____

Respectfully Submitted,

Amy Salowitz, CMMC
Village Clerk

Linda E. Lavey
Village President

PUTNAM TOWNSHIP RESOLUTION

PUTNAM TOWNSHIP BOARD OF TRUSTEES

Resolution No. 18-05

At a regular meeting of the Board of Trustees of Putnam Township, Livingston County, Michigan, held at the Putnam Township Hall, 3280 W. M-36, Pinckney, MI, held on February 21, 2017 at 7:00 p.m.:

Present: **Brennan, Guyon, Press, Chambers, Carney and Klein**

Absent: **Bennett**

The following resolution was offered by **Carney** and supported by **Guyon**.

Resolution of Adoption of the Pinckney-Putnam Parks and Recreation Master Plan

WHEREAS, Putnam Township and the Village of Pinckney have undertaken the update of their five-year parks and recreation plan which describes the community's physical and social characteristics, existing parks and recreation facilities, and the desired actions to be taken to improve parks and recreation facilities during the period between 2018 and 2022; and

WHEREAS, the Parks and Recreation Master Plan Committee reviewed the *Pinckney-Putnam Parks and Recreation Master Plan* during the course of several meetings held on October 4, November 14, December 20, 2017 and February 13, 2018; and

WHEREAS, the *Pinckney-Putnam Parks and Recreation Master Plan's* goals and objectives were developed in response to needs and deficiencies identified by a survey of residents conducted in October and November 2017 and input from Township and Village officials, community stakeholders, and staff; and

WHEREAS, the *Pinckney-Putnam Parks and Recreation Master Plan* has been made available for public review in the manner required by law and all comments from the public have been considered by the Parks and Recreation Master Plan Committee; and

WHEREAS, the plan was developed for the benefit of the entire community and a public hearing was held on February 21st, 2018 to provide an opportunity for citizens to express opinions, ask questions, and discuss all aspects of the Master Plan; and

NOW, THEREFORE, BE IT RESOLVED that the Putnam Township Board of Trustees hereby adopts the *Pinckney-Putnam Parks and Recreation Master Plan*.


RESOLUTION ADOPTED

Yeas: **Brennan, Guyon, Press, Chambers, Carney and Klein**

Nays: **None**

STATE OF MICHIGAN)
)
COUNTY OF LIVINGSTON)

I, the undersigned, the duly elected Clerk of Putnam Township, Livingston County, Michigan, DO HEREBY CERTIFY that the foregoing is a true and complete representation of certain proceedings conducted by the Board of Trustees of said Township at a meeting held on the 21st day of February, 2018.


Sally D. Guyon, CMC /CMC
Putnam Township Clerk

PINCKNEY VILLAGE COUNCIL RESOLUTION

Village of Pinckney Resolution of Adoption of the Pinckney-Putnam Parks and Recreation Master Plan

WHEREAS, Putnam Township and the Village of Pinckney have undertaken the update of their five-year parks and recreation plan which describes the community's physical and social characteristics, existing parks and recreation facilities, and the desired actions to be taken to improve parks and recreation facilities during the period between 2018 and 2022; and

WHEREAS, the Parks and Recreation Master Plan Committee reviewed the *Pinckney-Putnam Parks and Recreation Master Plan* during the course of several meetings held on October 4, November 14, December 20, 2017 and February 13, 2018; and

WHEREAS, the *Pinckney-Putnam Parks and Recreation Master Plan's* goals and objectives were developed in response to needs and deficiencies identified by a survey of residents conducted in October and November 2017 and input from Township and Village officials, community stakeholders, and staff; and

WHEREAS, the *Pinckney-Putnam Parks and Recreation Master Plan* has been made available for public review in the manner required by law and all comments from the public have been considered by the Parks and Recreation Master Plan Committee; and

WHEREAS, the plan was developed for the benefit of the entire community and a public hearing was held on February 21st, 2018 by Putnam Township Board and on February 26, 2018 by the Pinckney Village Council to provide another opportunity for citizens to express opinions, ask questions, and discuss all aspects of the Master Plan; and

NOW, THEREFORE, BE IT RESOLVED that the Pinckney Village Council hereby adopts the *Pinckney-Putnam Parks and Recreation Master Plan*.

Motion by: *Foster*

Supported by: *Vedder*

Votes in favor: *Dombrowski, Foster, Kausenud, Pais, Vedder, Carey*

Votes opposed: *—*

Abstained: *—*

Absent: *Tibus*

I hereby certify that the above is a true and complete copy of a resolution duly adopted by the Pinckney Village Council at a meeting held on the 26th day of February, 2018.



Amy Salowitz, Clerk
VILLAGE OF PINCKNEY, MICHIGAN

LETTERS OF TRANSMITTAL TO REGIONAL AGENCIES



February 27, 2018

Kathleen Kline-Hudson
Director
Livingston County Planning Department
304 E Grand River Ave, Suite 206
Howell, MI 48843

Re: Pinckney-Putnam Parks and Recreation Master Plan

Dear Ms. Kline-Hudson:

The attached Pinckney-Putnam Parks and Recreation Master Plan was adopted by the Putnam Township Board of Trustees on February 21, 2018 and the Pinckney Village Council on February 26, 2018. The plan will be sent to the Michigan Department of Natural Resources for their review and approval.

The plan will be subject to future review and updates as deemed necessary by Putnam Township and the Village of Pinckney.

Please feel free to contact Putnam Township, the Village of Pinckney, or myself if you have any comments regarding this plan. The Grants Section requests that you copy any comments directly to them at: Grants Management, Michigan Department of Natural Resources, P.O. Box 30425, Lansing, MI 48909-7925.

Thank you for your consideration,

A handwritten signature in purple ink that reads 'Lucie Fortin'.

Lucie Fortin, AICP, PLA
Community Planner/Landscape Architect

cc: Sally D. Guyon, Clerk, Putnam Township, 3280 W. M-36, Pinckney, MI 48169
Amy Salowitz, Clerk, Village of Pinckney, 220 S. Howell St., Pinckney, MI 48169



TECHNICAL SKILL.
CREATIVE SPIRIT.

Transmittal - County.docx

1771 N. Dixie Highway, Monroe, Michigan 48162 Tel: 734.289.2200 Fax: 734.289.2345 www.MannikSmithGroup.com



February 27, 2018

Tyler Klifman
Planner
Southeast Michigan Council of Governments
1001 Woodward Avenue, Suite 1400
Detroit, MI 48226

Re: Pinckney-Putnam Parks and Recreation Master Plan

Dear Mr. Klifman:

The attached Pinckney-Putnam Parks and Recreation Master Plan was adopted by the Putnam Township Board of Trustees on February 21, 2018 and the Pinckney Village Council on February 26, 2018. The plan will be sent to the Michigan Department of Natural Resources for their review and approval.

The plan will be subject to future review and updates as deemed necessary by Putnam Township and the Village of Pinckney.

Please feel free to contact Putnam Township, the Village of Pinckney, or myself if you have any comments regarding this plan. The Grants Section requests that you copy any comments directly to them at: Grants Management, Michigan Department of Natural Resources, P.O. Box 30425, Lansing, MI 48909-7925

Thank you for your consideration,

A handwritten signature in blue ink that reads 'Lucie Fortin'.

Lucie Fortin, AICP, PLA
Community Planner/Landscape Architect

cc: Sally D. Guyon, Clerk, Putnam Township, 3280 W. M-36, Pinckney, MI 48169
Amy Salowitz, Clerk, Village of Pinckney, 220 S. Howell St., Pinckney, MI 48169



TECHNICAL SKILL.
CREATIVE SPIRIT.

Transmittal - SEMCOG.docx

1771 N. Dixie Highway, Monroe, Michigan 48162 Tel: 734.289.2200 Fax: 734.289.2345 www.MannikSmithGroup.com