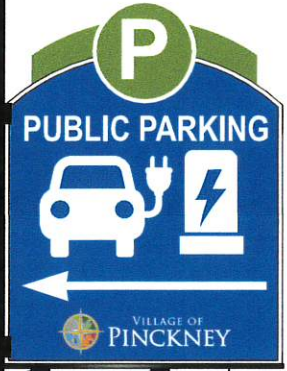


3" ALUMINUM BALL
SEMI-GLOSS
BLACK FINISH

 PMS 377 U

 PMS 294C

 DIGITAL PRINT



3" ALUMINUM BALL
SEMI-GLOSS
BLACK FINISH

21" X 16" SINGLE SIDED
MOUNTED ALUMINUM
PANEL W/ PRINTED
UV LAMINATE VINYL
GRAPHICS

FLAG MOUNTED ALUMINUM
BRACKET SEMI-GLOSS
BLACK FINISH
24" X 18" ALUMINUM
PANEL W/ PRINTED
UV LAMINATE VINYL
GRAPHICS



3" ALUMINUM ROUND POST
SEMI-GLOSS BLACK FINISH
HEIGHT TBD

10" HIGH ALUMINUM BASE
SEMI-GLOSS BLACK FINISH



2240 Lansing Ave., Pinckney MI 48169
2500 Abingdon St., Lansing MI 48906
662 S Mansfield St., Lansing MI 48907
1905 Pine Creek Rd., Manistee, MI 49669
317-244-3720 www.johnsonsignco.com

JOB NAME:
VILLAGE OF
PINCKNEY
LOCATION:
220 HOWELL ST
PINCKNEY MI 48169
ACCOUNT REP: JIM
DESIGNER: LE
REVISION:

NOTES:
FURNISH (3) NEW
ELECTRIC VEHICLE
POWER STATION
POLE SIGNS W/
DECORATIVE POLES
& BASES

FILE NAME:
230741-02
SCALE:
ACTUAL SIZE

This design and all material appearing hereon constitute the original unpublished work of Johnson Sign Co. may not be duplicated, used or disclosed without written consent.

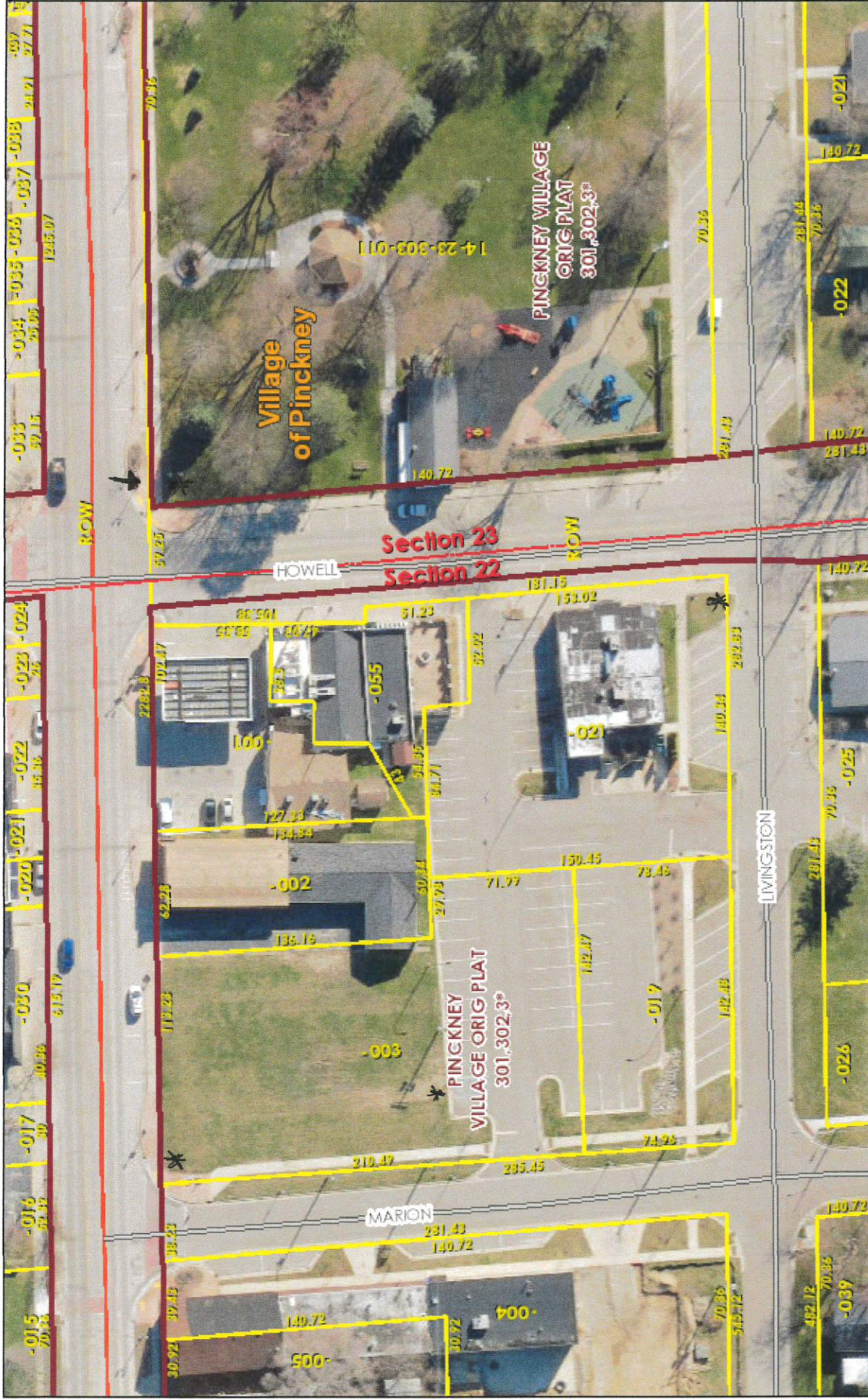
 THIS SIGN IS INTENDED TO BE MANUFACTURED IN ACCORDANCE WITH ARTICLE 609 OF THE NATIONAL ELECTRICAL CODE AND/OR OTHER APPLICABLE LOCAL CODES. THIS INCLUDES PROPER GROUNDING & BONDING OF THE SIGN. SIGN WILL BEAR UL LABEL(S).

JOHNSON SIGN CO.
DOES NOT PROVIDE
PRIMARY ELECTRICAL
TO SIGN LOCATION.
SEE SIGNAGE FOR DETAILS.

CUSTOMER APPROVAL: _____ DATE: _____

  
INTERNATIONAL SIGN ASSOCIATION

Livingston County GIS Map



3/27/2023, 12:05:12 PM

Tax Parcel

Roads

Parcel Dimensions

Subdivision / Condominium

State Route

Interstate Highway

U.S. Highway

Major Road

Minor Road

PLSS Section

Municipality

Scale: 1:1,129
 0 0.01 0.01 0.02 mi / 0 0.01 0.02 0.04 km

SEMCOG, Esri, HERE, Garmin, GeoTechnologies, Inc., USGS, EPA, Livingston County IT/GIS

Map information depicted is not intended to replace or substitute for any official or primary source. Boundary measurements and area calculations are approximate and should not be construed as survey measurements.

Livingston County IT/GIS