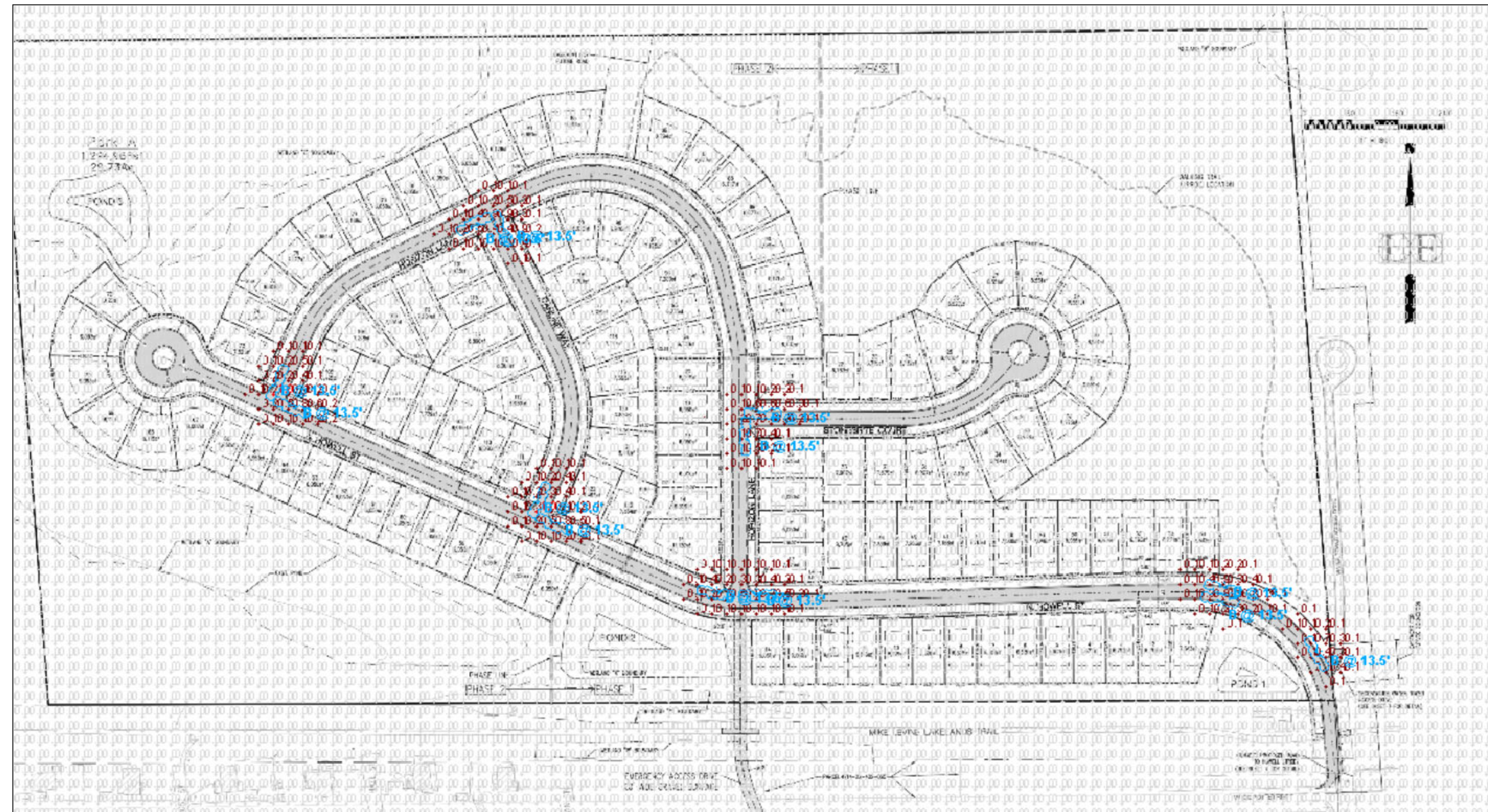


Site Plan showing Pole Locations

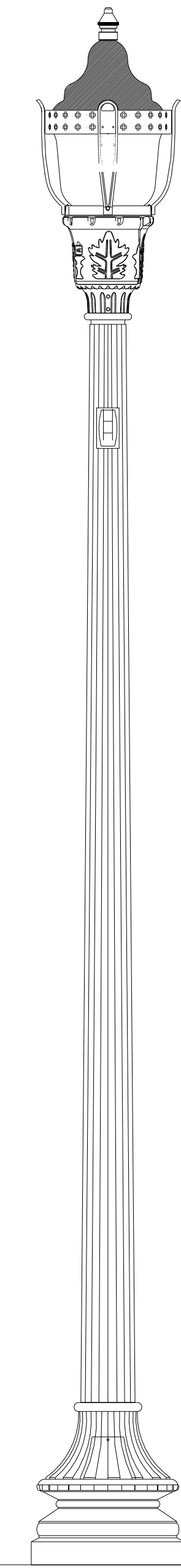
Scale: 1" = 100'



Photometric Results

Statistics						
Description	Symbol	Avg	Max	Min	Max/Min	Avg/Min
Horizontal Illuminance	+	0.0 fc	1.0 fc	0.0 fc	N/A	N/A

GENERAL NOTES:
Lighting design does NOT meet IESNA Recommended Practices for local, collector, or major road (IES RP-8-14) classifications with MINIMUM maintained: horizontal minimum or average illuminance (E_{min} or E_{avg}); vertical minimum or average illuminance (E_{Vmin} or E_{Vavg}); or uniformity ratios (E_{avg}/E_{min} or E_{max}/E_{min}). With current configuration, advise customer to supplement roadways with additional roadway lighting.

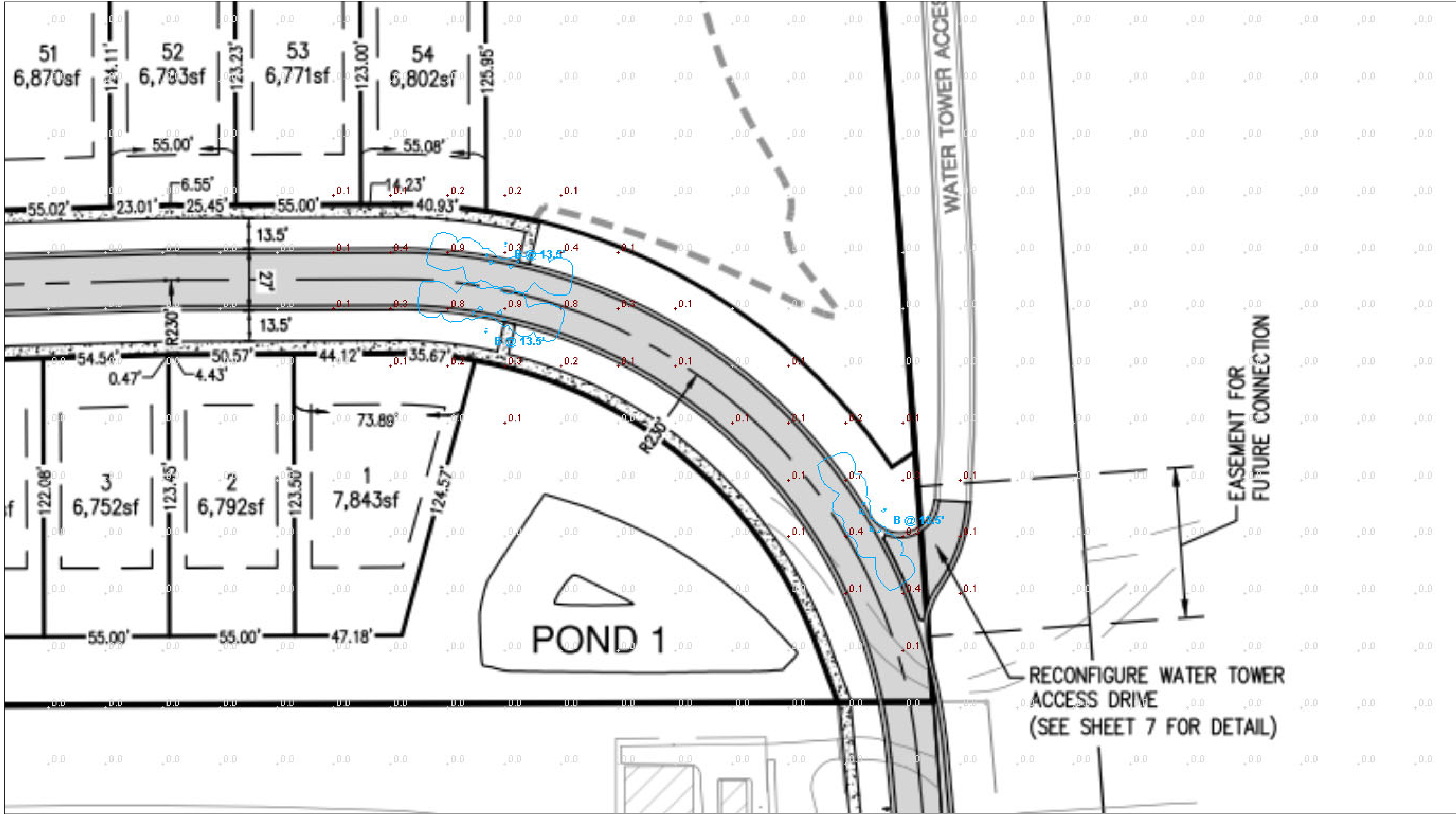


LUMINAIRE DETAILS:
39W LED Acorn Post Top Luminaire with full cover, ribs and band

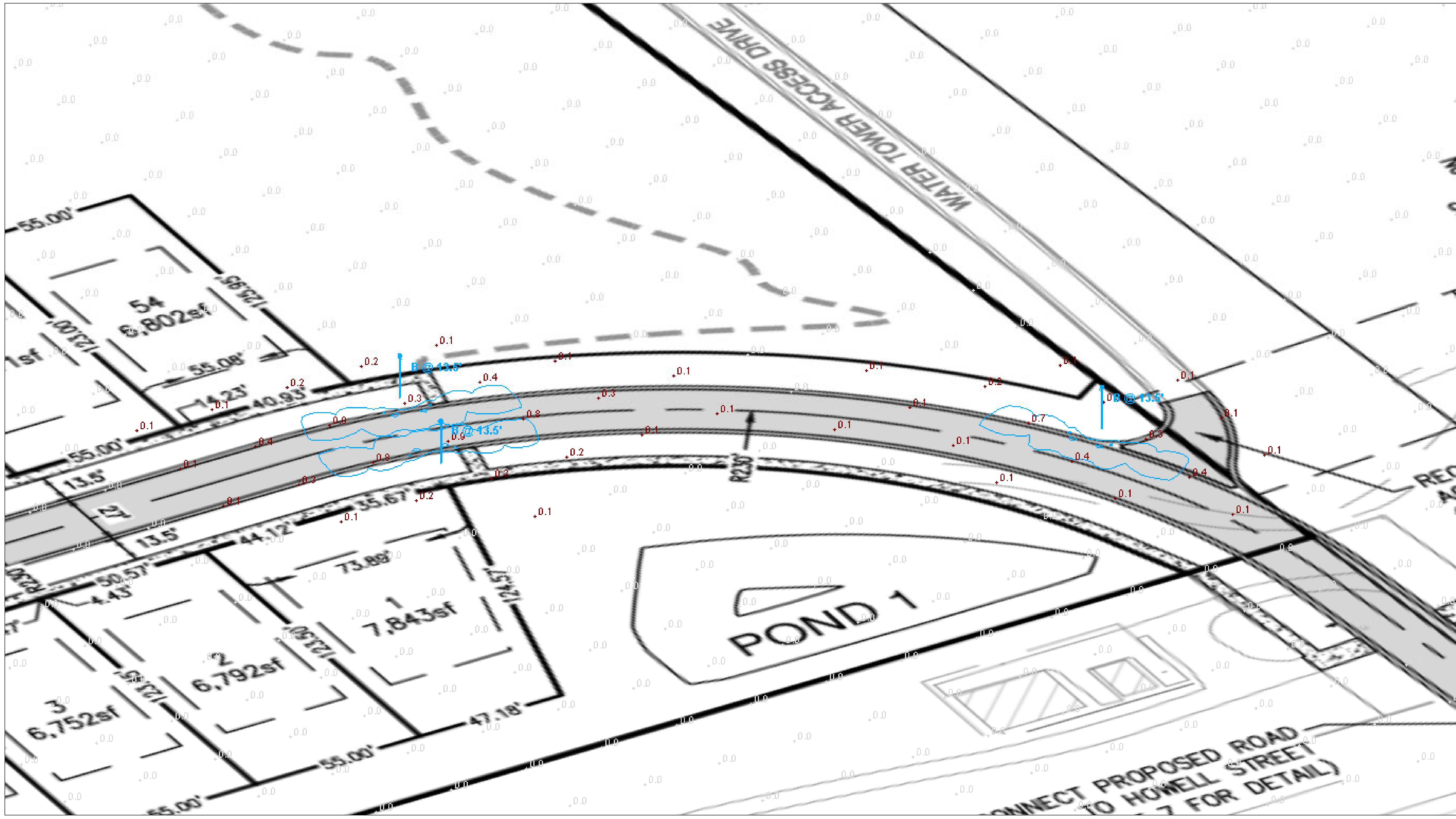
POLE DETAILS:
11.5' Fiberglass Fluted Pole mounted to concrete foundation
(mounting height = 13.5')

Schedule								
Symbol	Label	QTY	Description	Number Lamps	Lumens per Lamp	LLF	Wattage	
⬇	B	13	GranVille II LED, LED Package 20, 4000K, 39, 120-277V, Type 3 distribution, Ribs & bands with Full Cover option	1	4338	0.775	39	

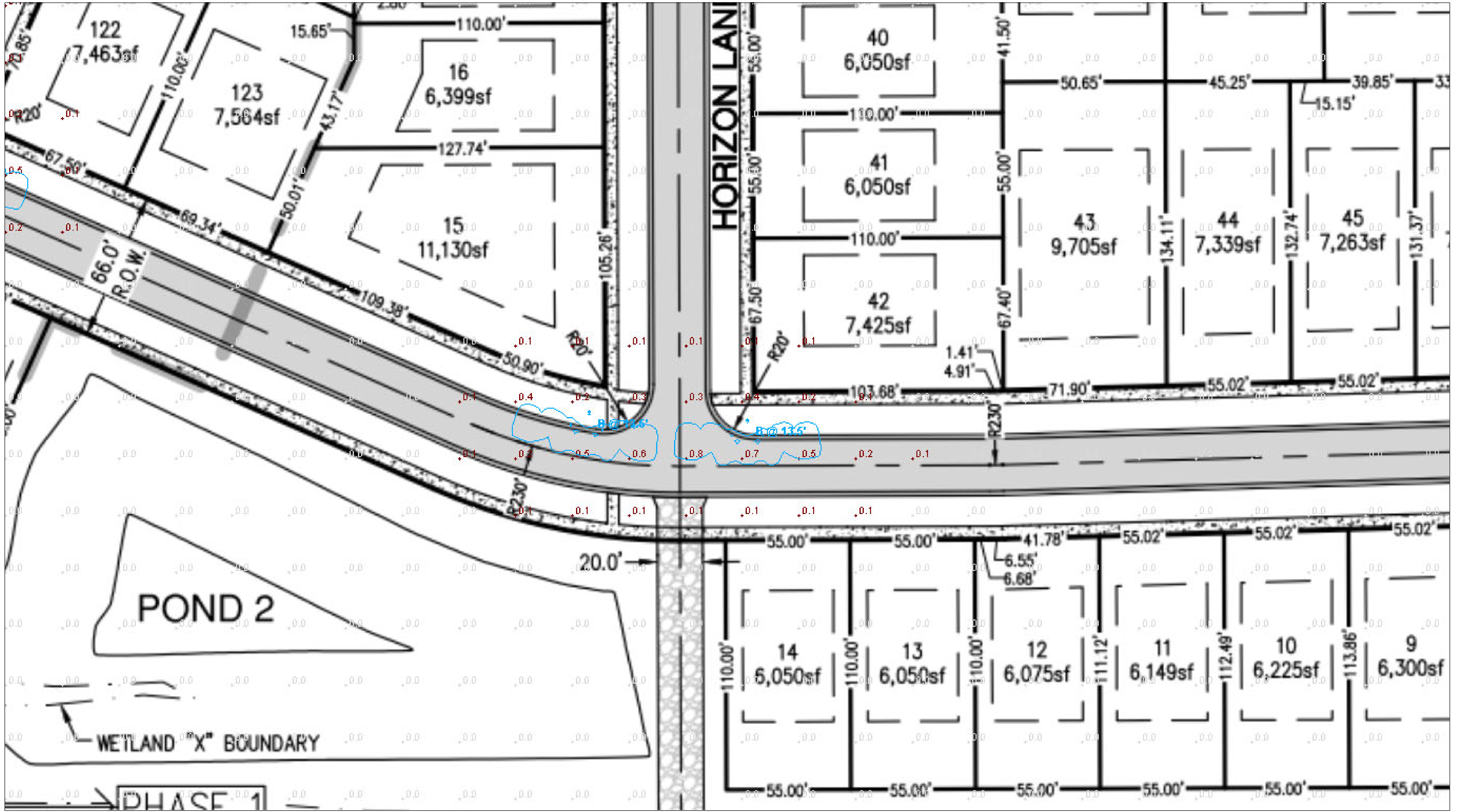
Designer
M. Valascho
Date
10/6/2020
Scale
Not to Scale
Drawing No.
Summary



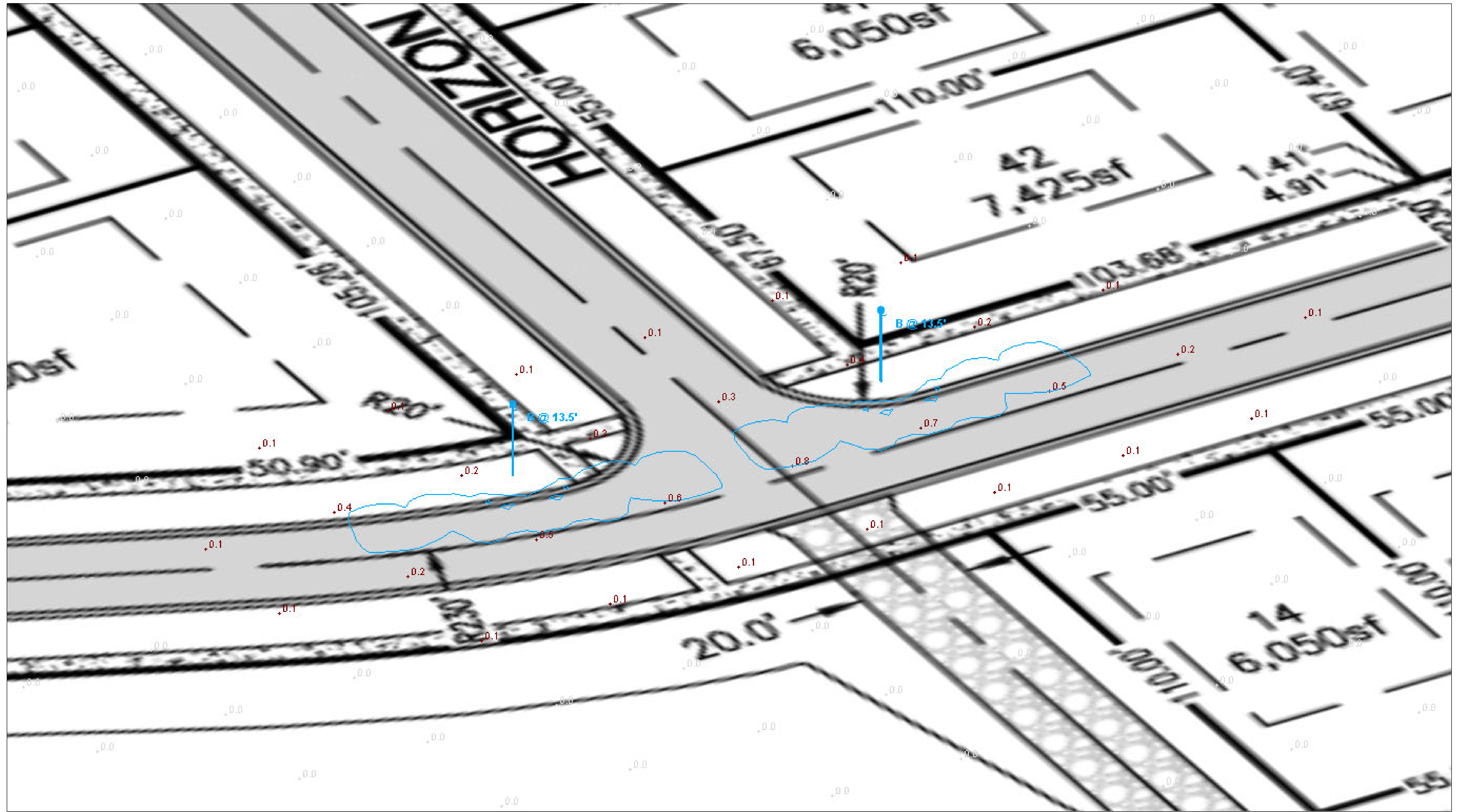
HOWELL ENTRANCE 1



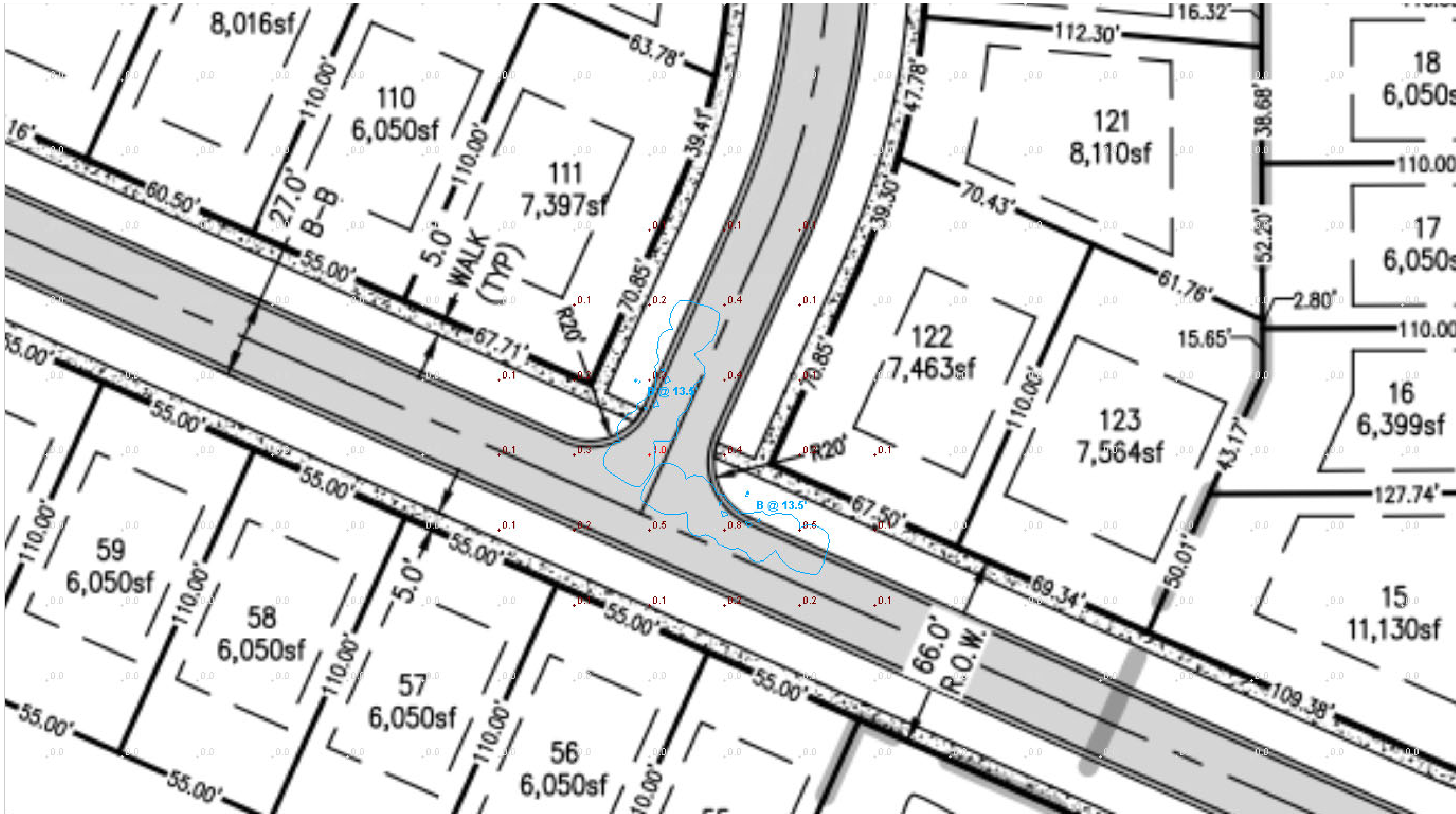
HOWELL ENTRANCE 2



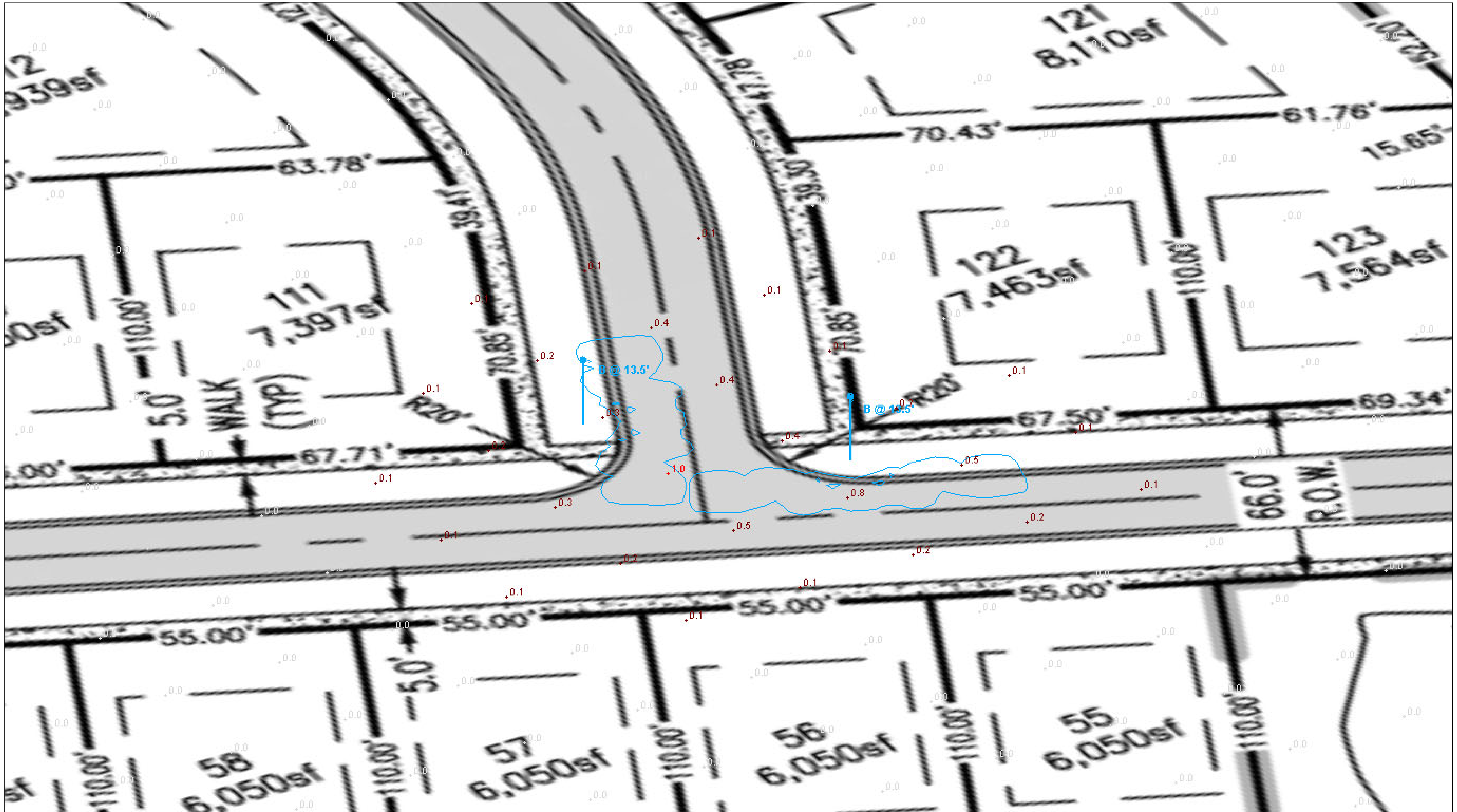
HOWELL-HORIZON E 1



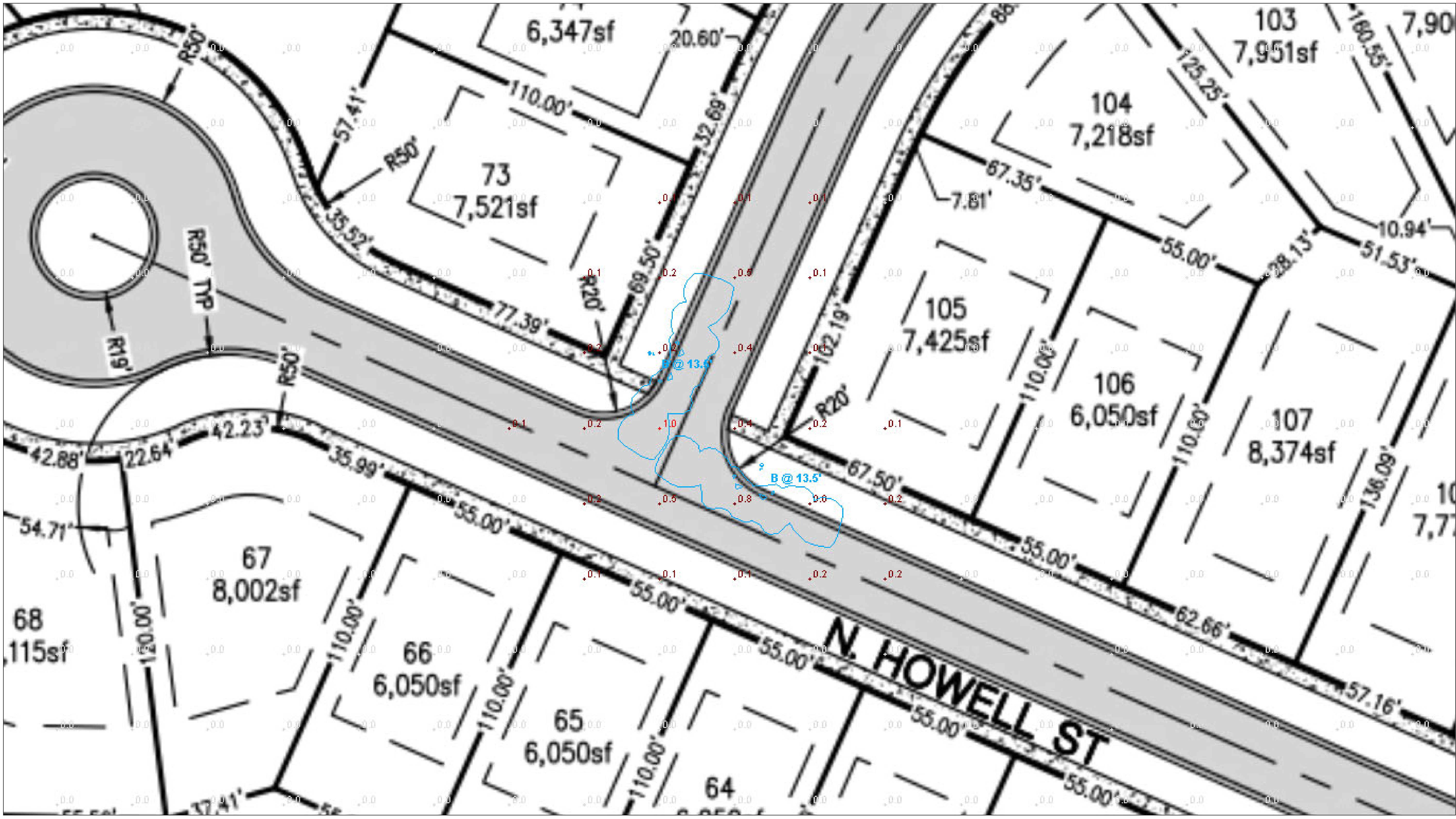
HOWELL-HORIZON E 2



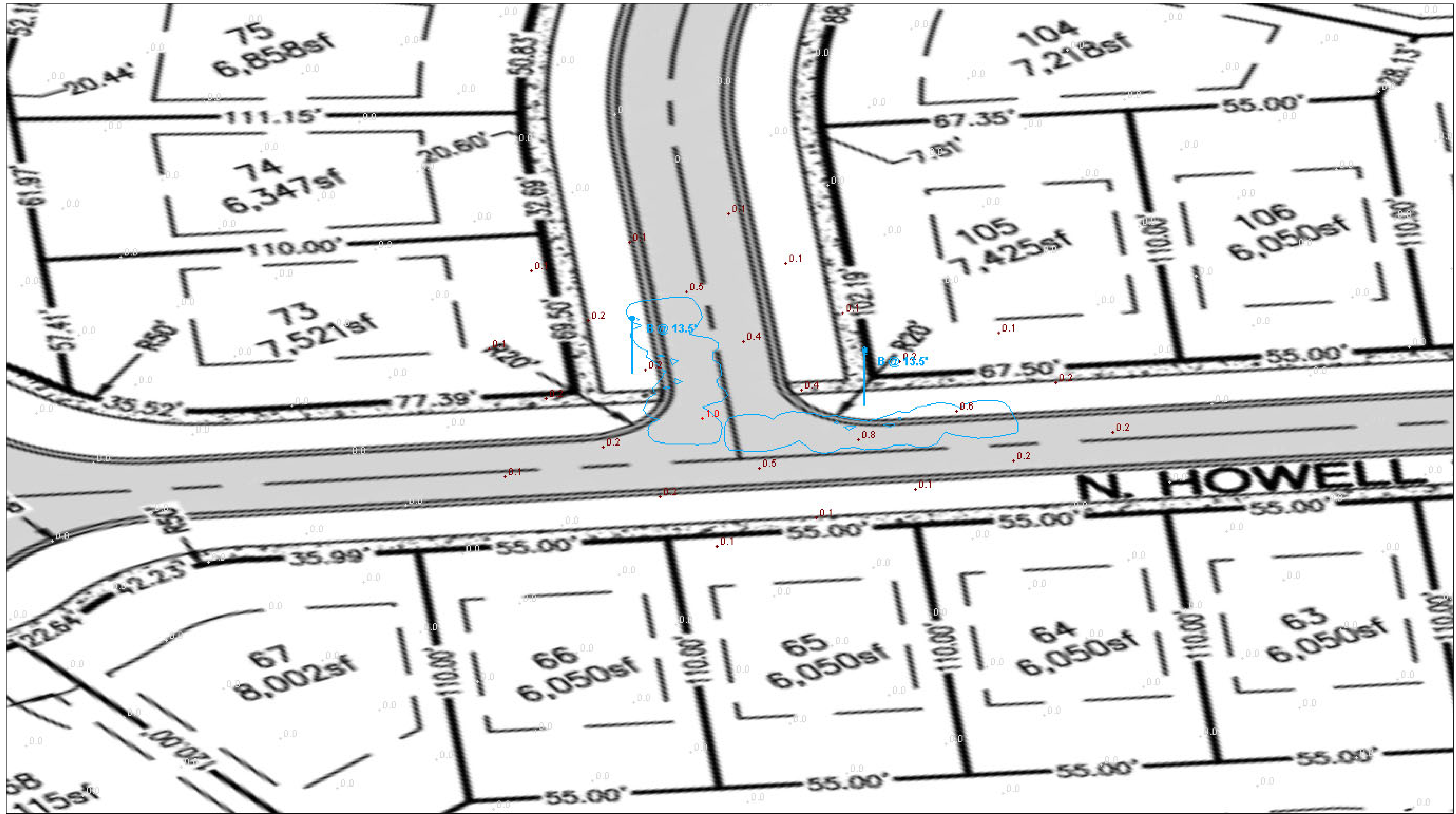
HOWELL-DANLINE 1



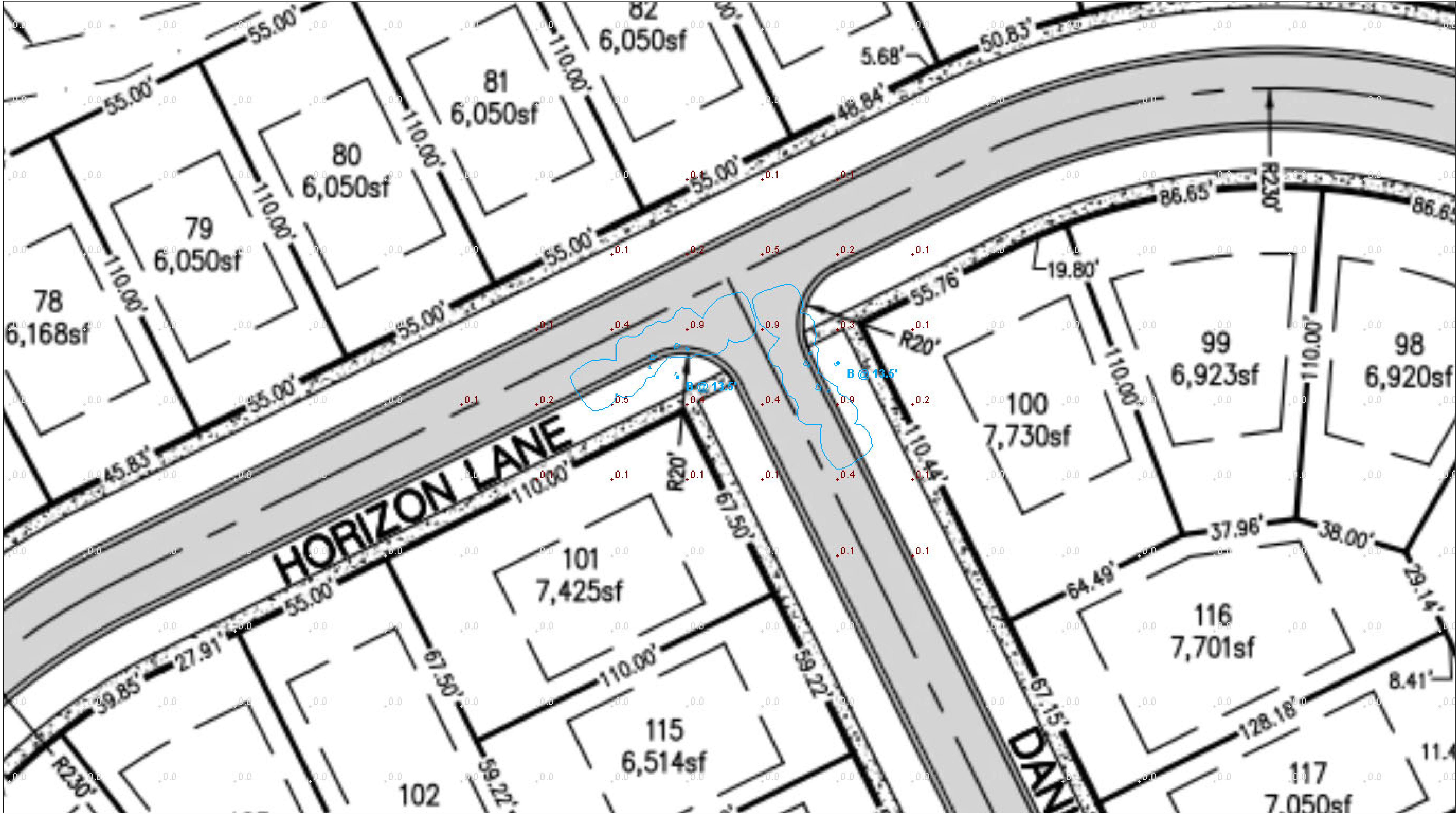
HOWELL-DANLINE 2



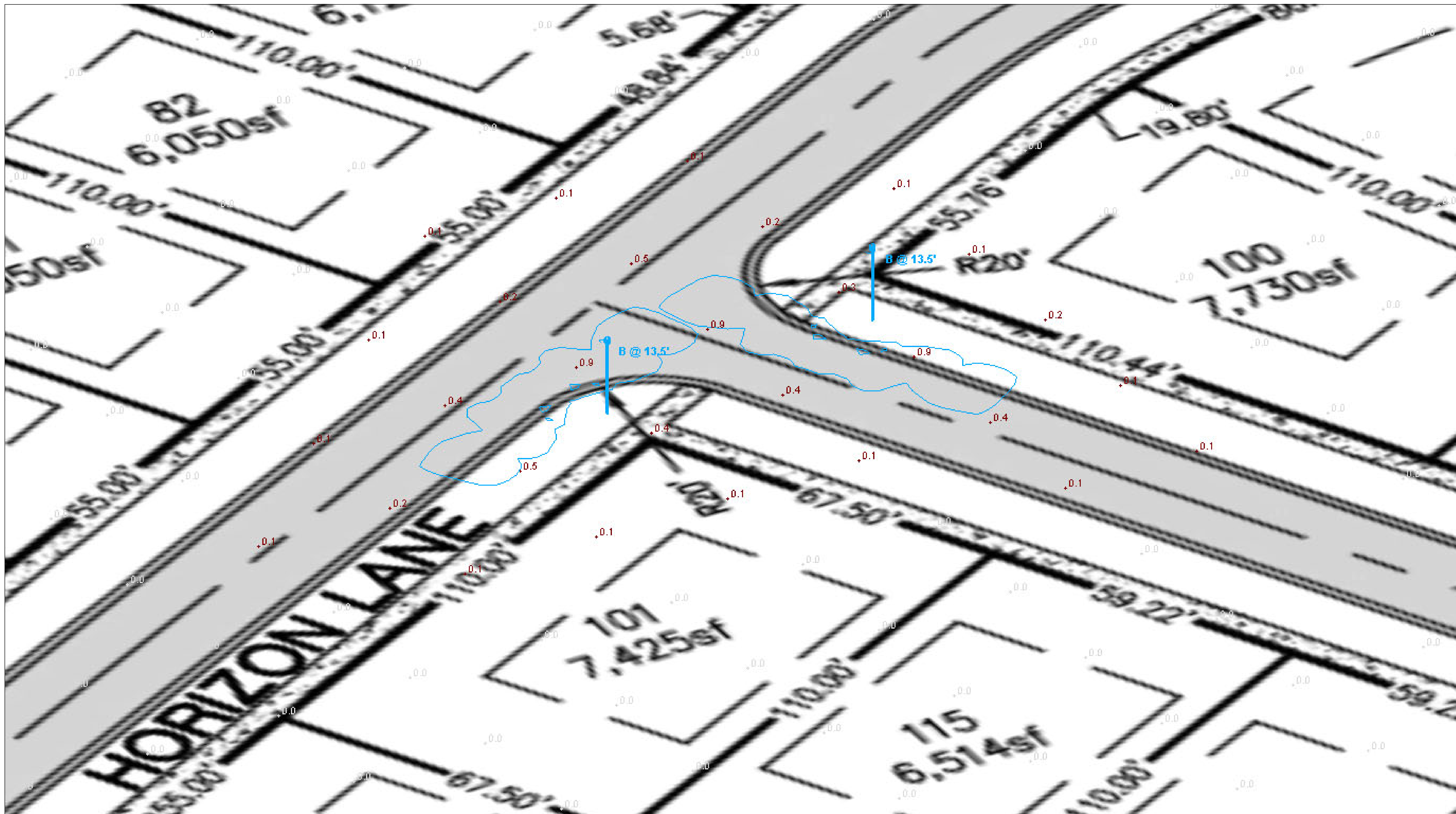
HOWELL-HORIZON W 1



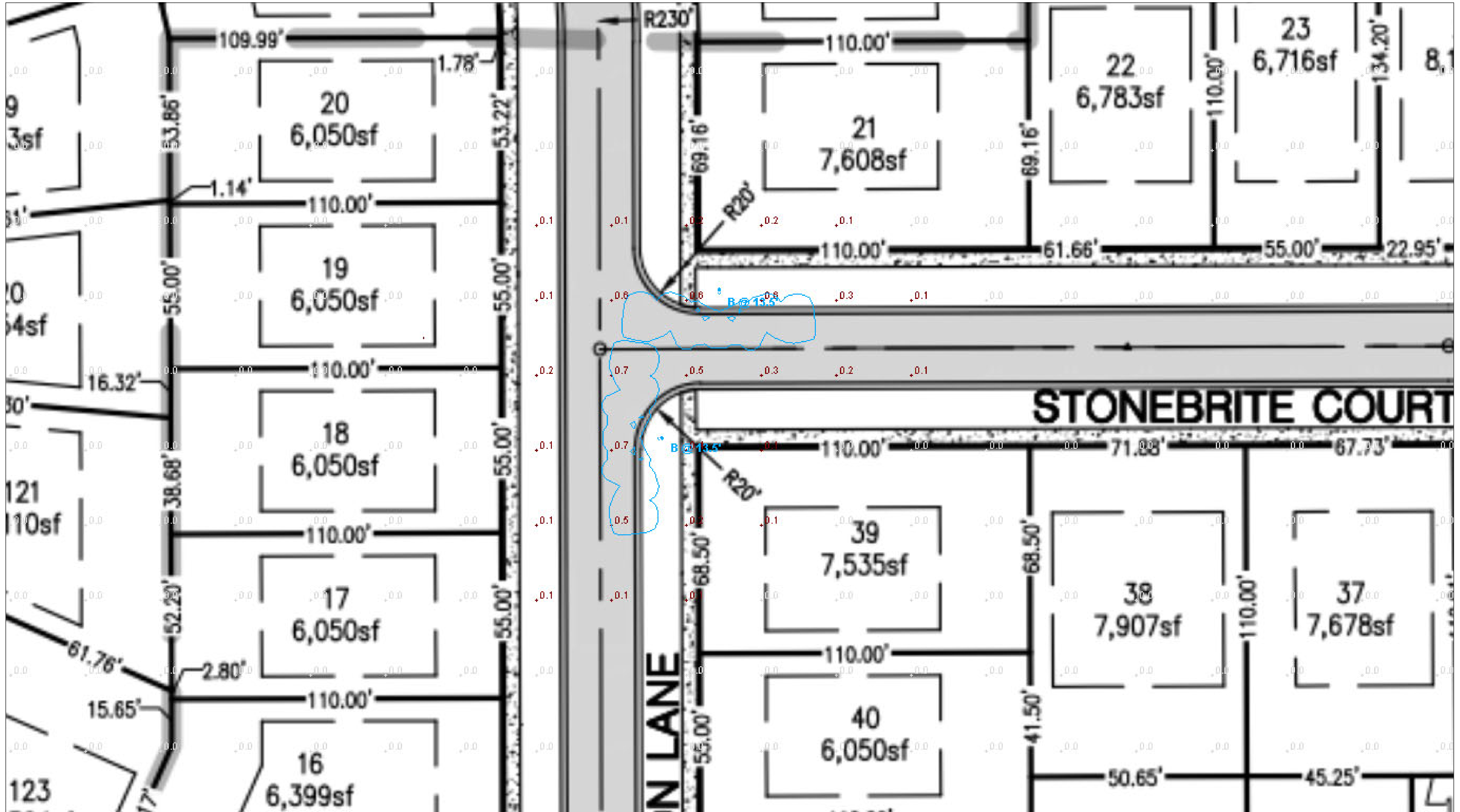
HOWELL-HORIZON W 2



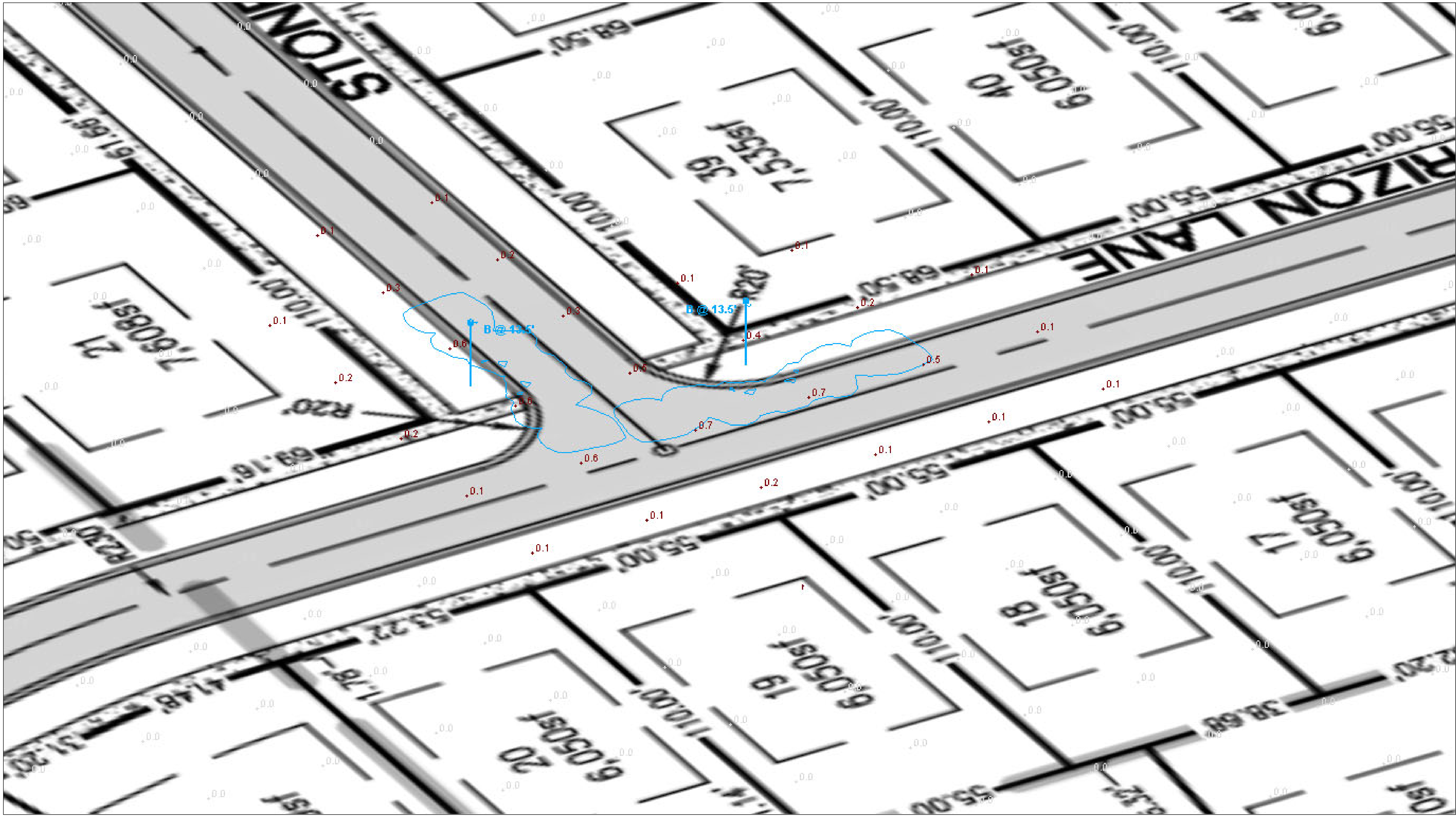
HORIZON-DANLINE 1



HORIZON-DANLINE 2



HORIZON-STONEBRITE 1



HORIZON-STONEBRITE 2